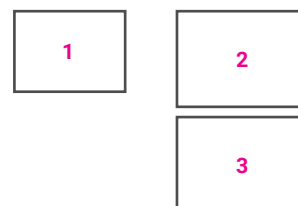


Tennis Pavilion in the Quinta da Conceição City Park

ARCHIVAL DATA

DATE (design and realization)	1956-1960
PLACE/ADDRESS	Matosinhos
COLLABORATORS	Alberto Neves, Vasco Cunha
CUSTOMER	Municipal Council of Matosinhos
SOURCES	Fundação Marques da Silva, Porto



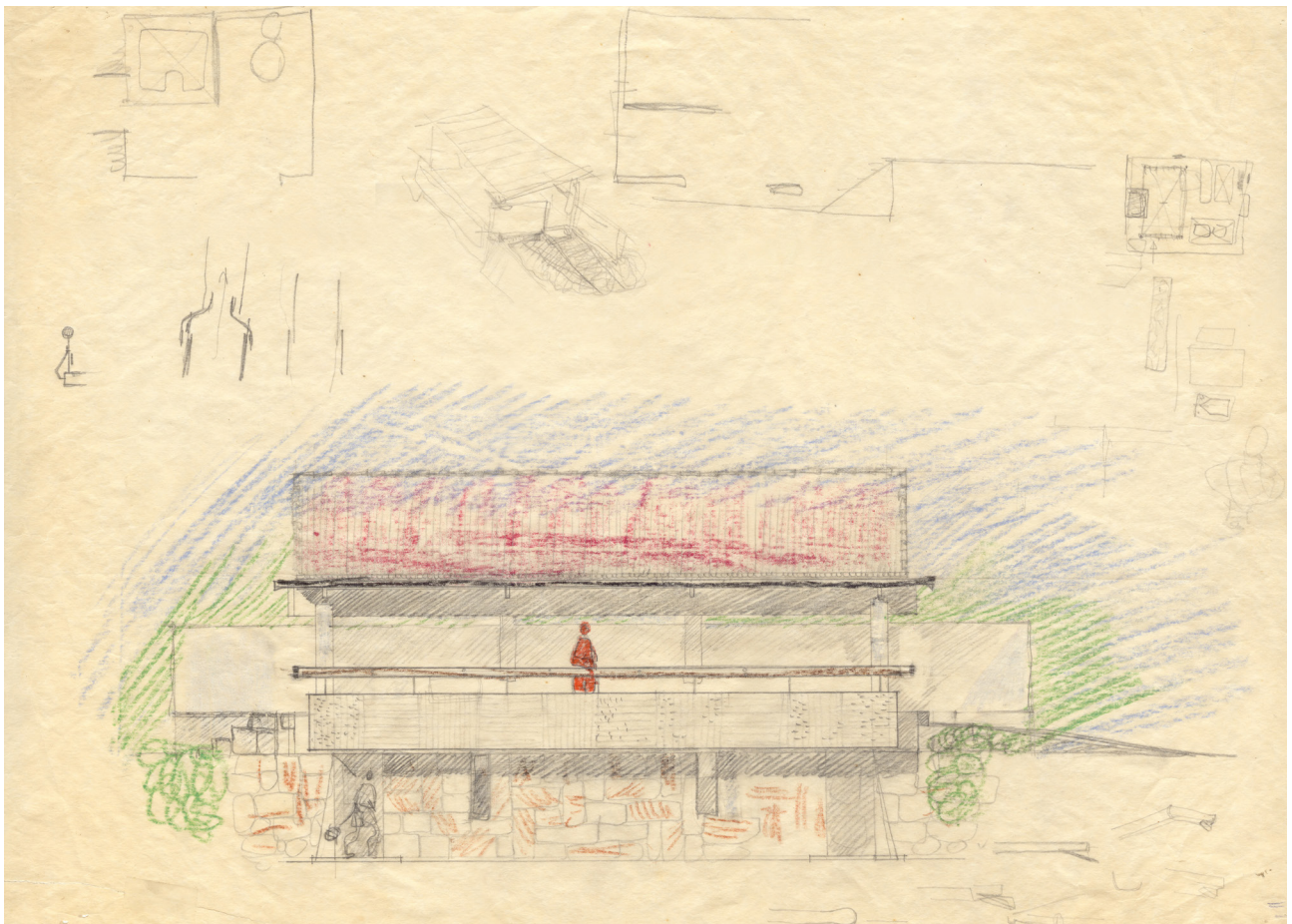
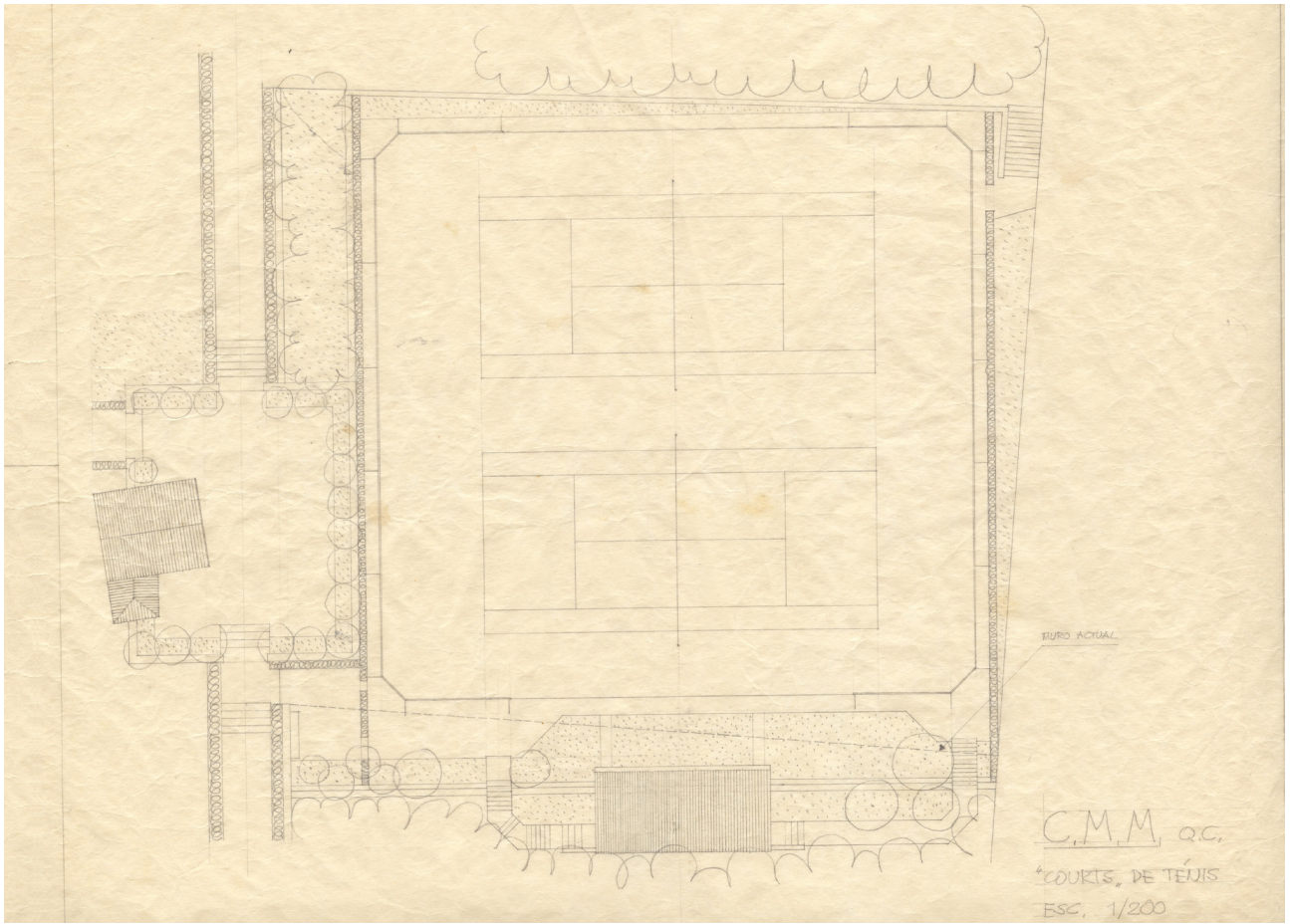
ESSENTIAL BIBLIOGRAPHY

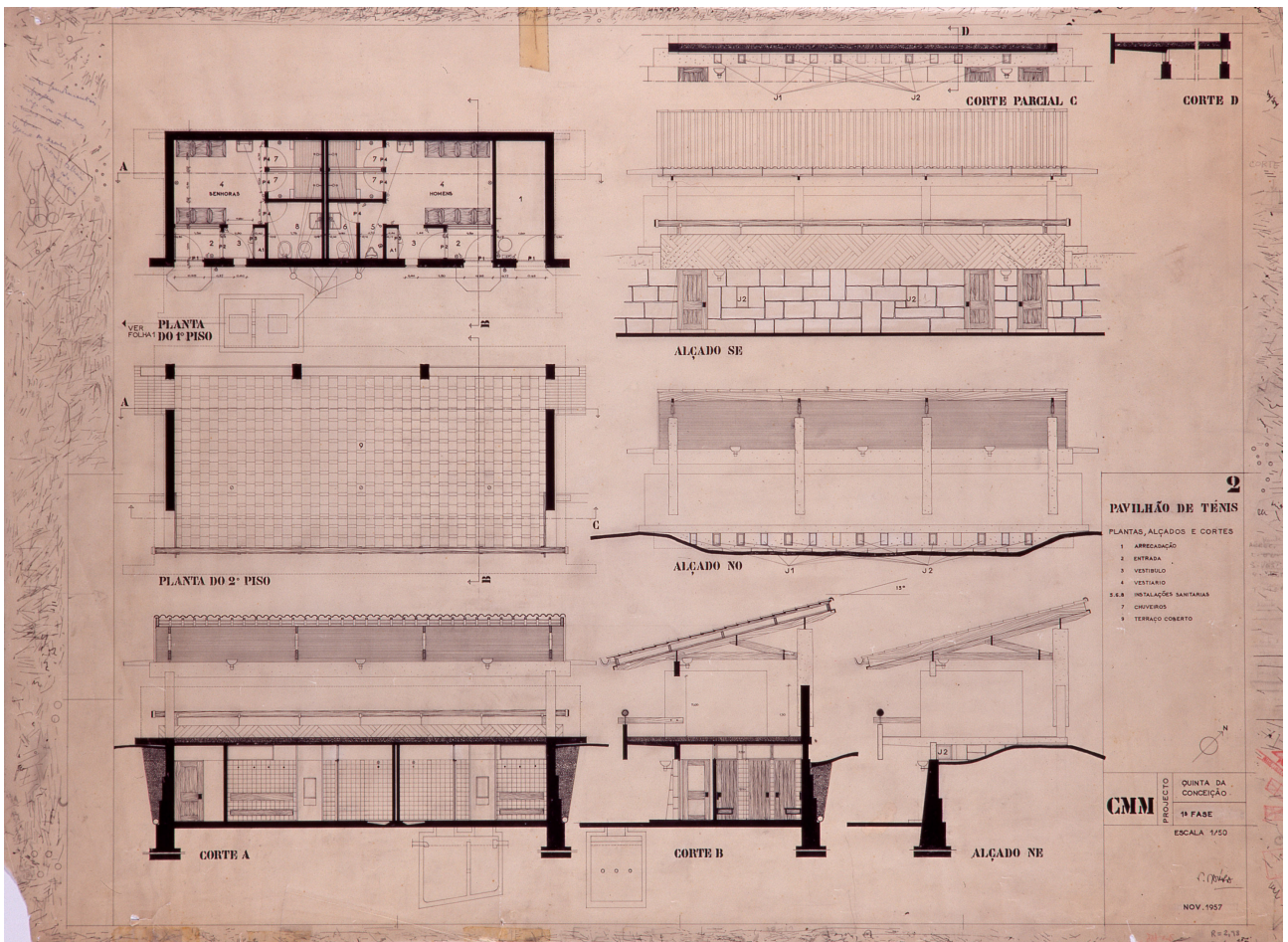
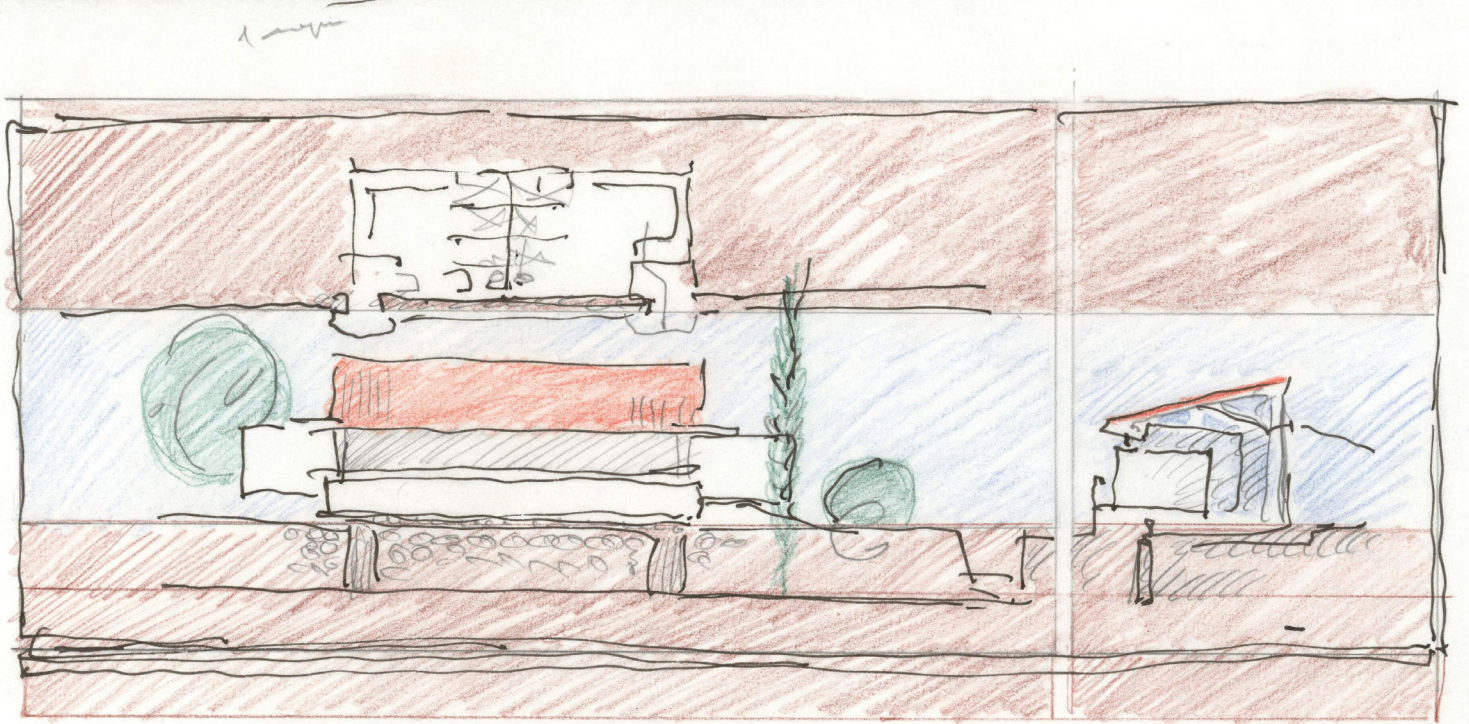
N. Portas, "Pavilhão de ténis, no parque (1957)", *Arquitectura*, no. 71 (1961): 26-28; F. Távora, "Parque Municipal de Conceição y Pabellón de Tenis Matosinhos 1957", *Arquitectura. Revista del colegio oficial de arquitectos de Madrid*, no. 261 (1986): 29-33; L. Trigueiros, *Fernando Távora* (Lisboa: Editorial Blau, 1993), 73-75; A. Esposito, G. Leoni, *Fernando Távora. Opera completa* (Milano: Electa, 2003), 106, 108, 114-115; J.C. Arnuncio, "Pabellón de la Quinta da Conceição. El pabellón de tenis de Fernando Távora", in *Veintiún edificios de arquitectura moderna en Oporto*, D. Villalobos, S. Pérez eds., (Valladolid: Departamento de Teoría de la Arquitectura y Proyectos Arquitectónicos, 2010), 193-206; W. J. Curtis, *Memória e criação: o parque e o pavilhão de ténis de Fernando Távora na Quinta da Conceição 1956-60*, in J. A. Bandeirinha (ed.), *Fernando Távora. Modernidade permanente Permanenet modernity* (Matosinhos: Casa da Arquitectura, 2012), 26-37, 126-131; J. A. Bandeirinha (ed.), *Fernando Távora. Modernidade permanente Permanenet modernity* (Matosinhos: Casa da Arquitectura, 2012), 432-435.

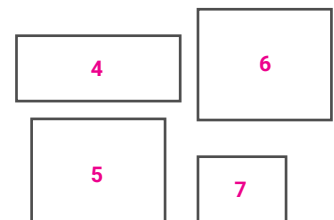
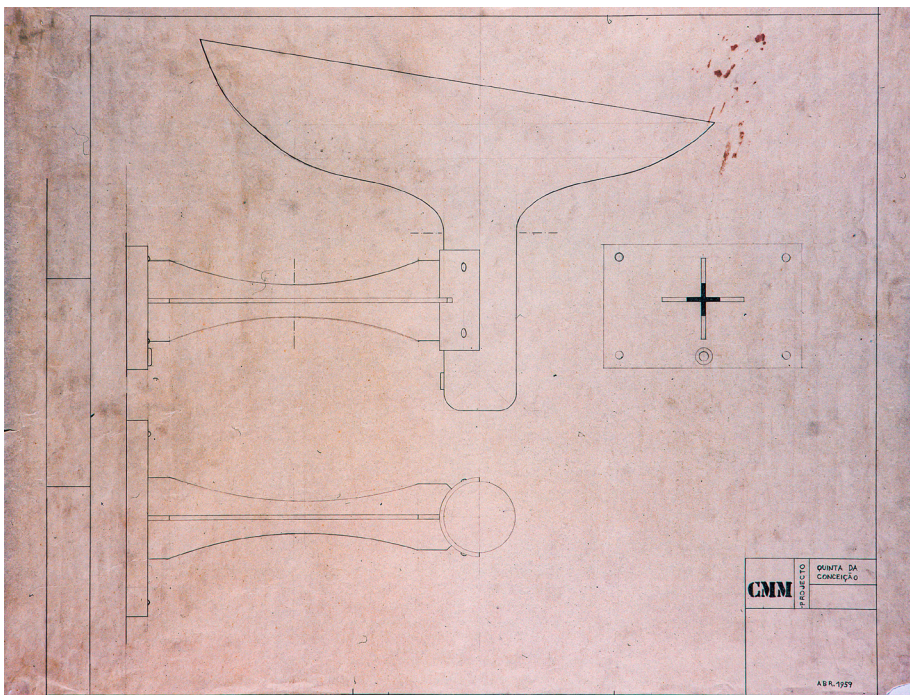
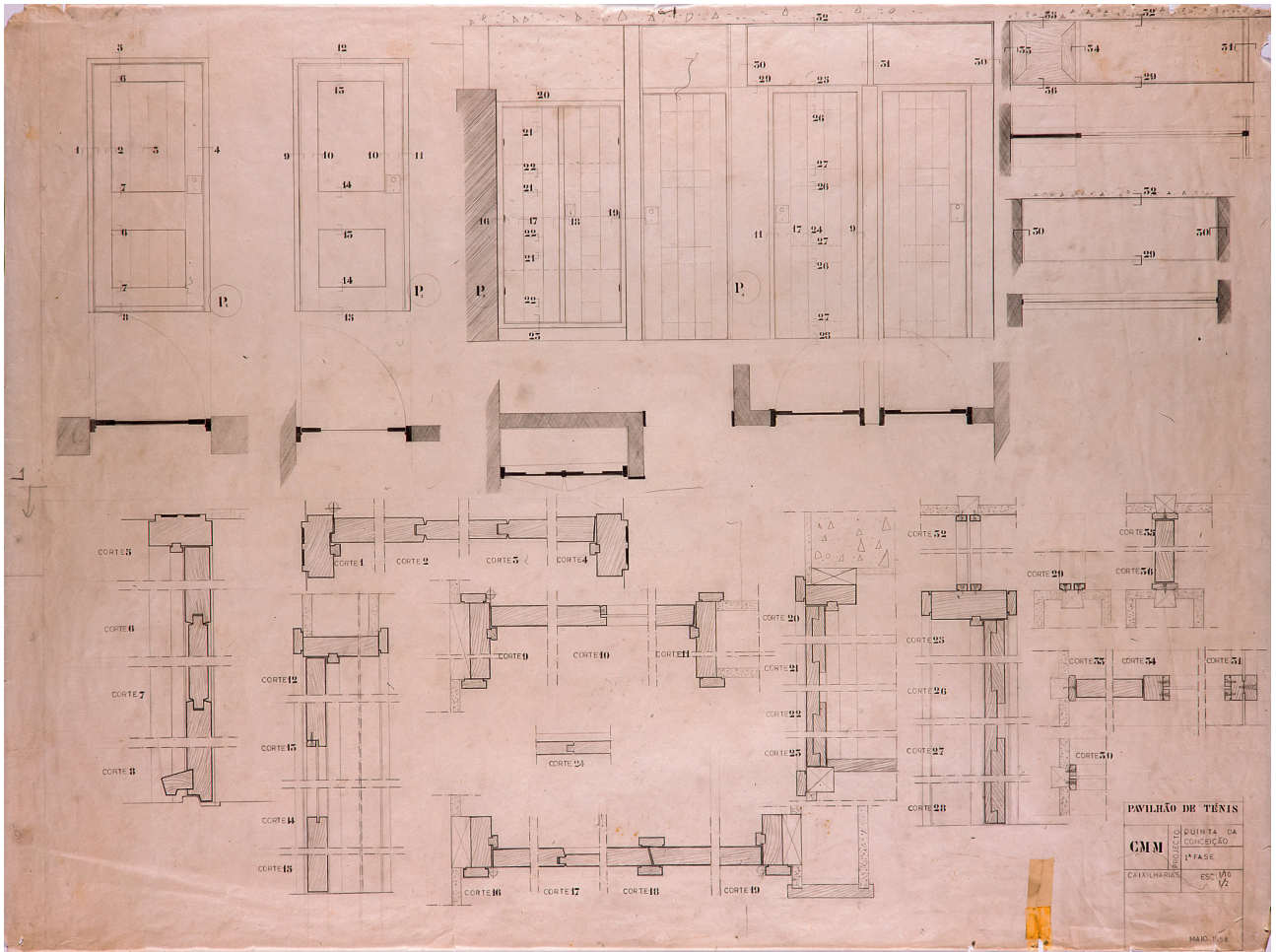
IMG.1: Tennis Pavilion in the Quinta da Conceição City Park, Matosinhos 1956-1960, design sketches, pencil on paper; IMG.2: general plan, pencil on paper; IMG.3: design sketches and elevation, pencil and colours on paper (FIMS/AFT).



<https://doi.org/10.6092/issn.2611-0075/19854> | ISSN 2611-0075
Copyright © 2022 Giovanni Bellucci







IMG.4: Tennis Pavilion in the Quinta da Conceição City Park, Matosinhos 1956-1960, design sketches, pencil on paper; IMG.5: main floors, sections and elevations; tracing paper; IMG.6: construction details of wooden frames, tracing paper; IMG.7: construction details of a lamp, tracing paper (FIMS/AFT).