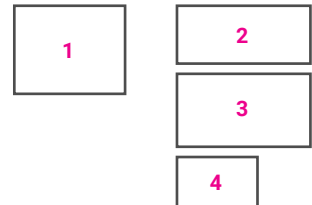


City Park of the Quinta da Conceição e de Santiago

ARCHIVAL DATA

DATE (design and realization)	1956-1960, 1967 (restaurant), 1993
PLACE/ADDRESS	Matosinhos
COLLABORATORS	José Pacheco, Álvaro Siza Vieira, Francisco Figueirado,
CUSTOMER	Municipal Council of Matosinhos
SOURCES	Fundação Marques da Silva, Porto



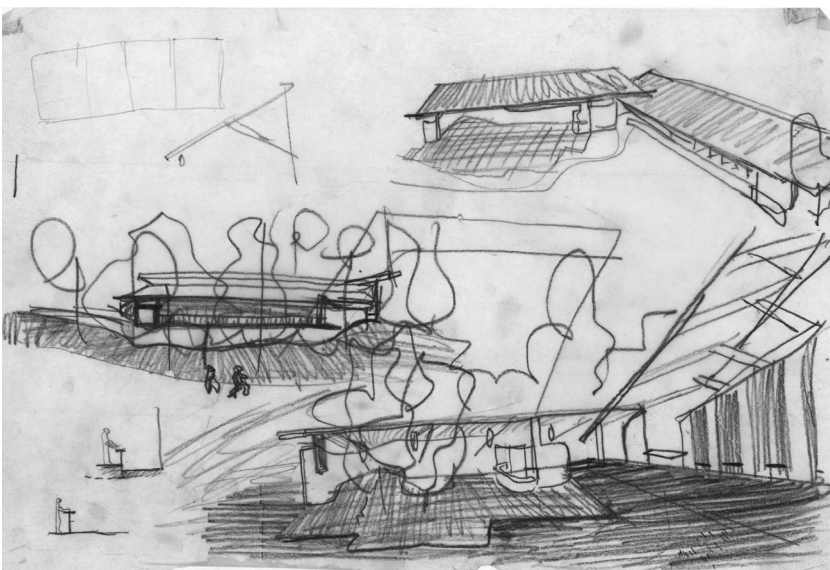
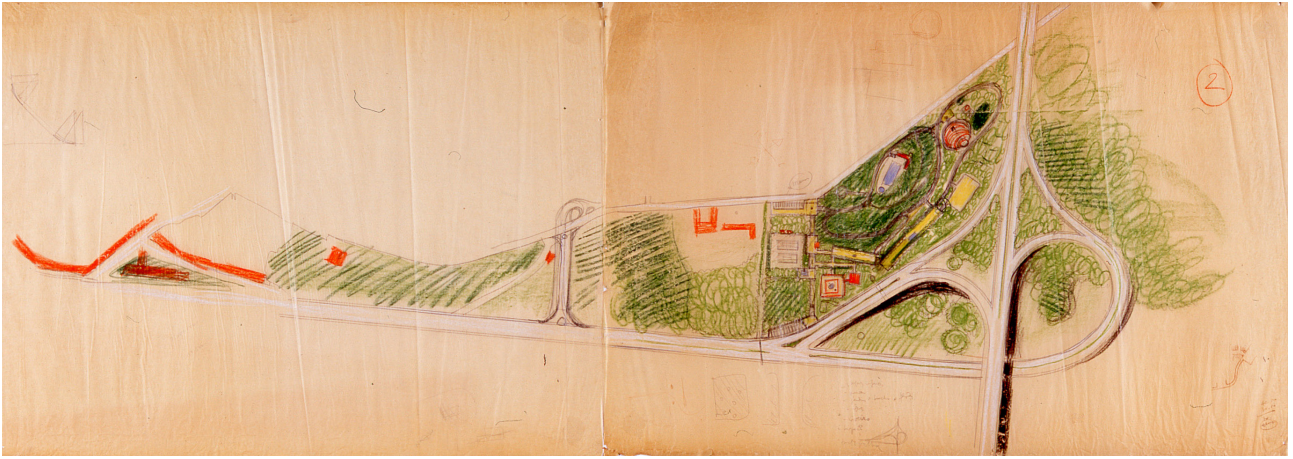
ESSENTIAL BIBLIOGRAPHY

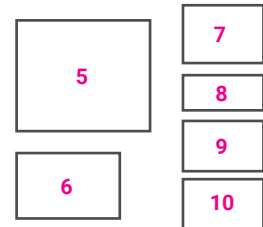
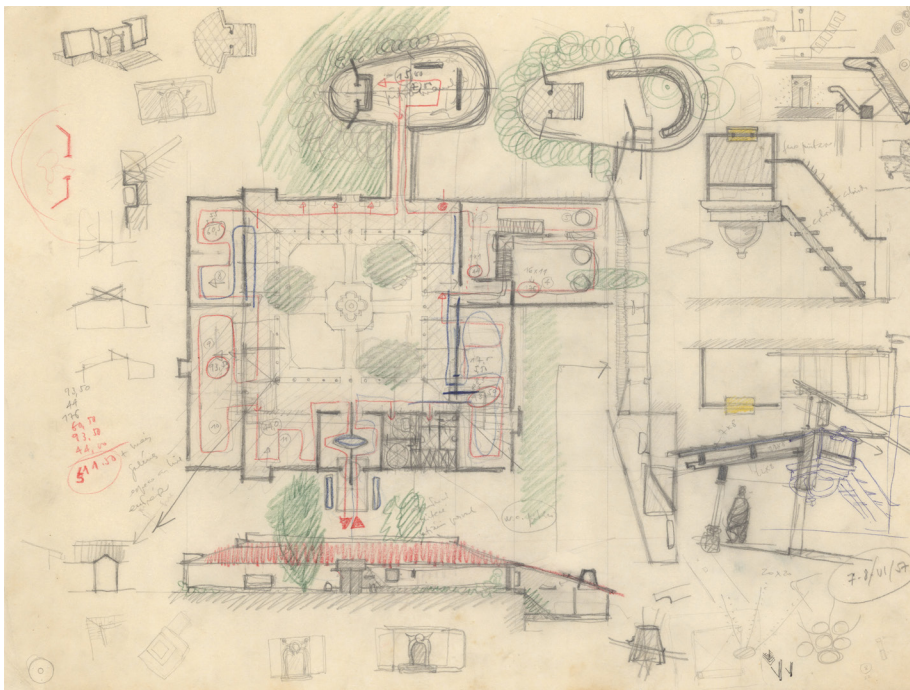
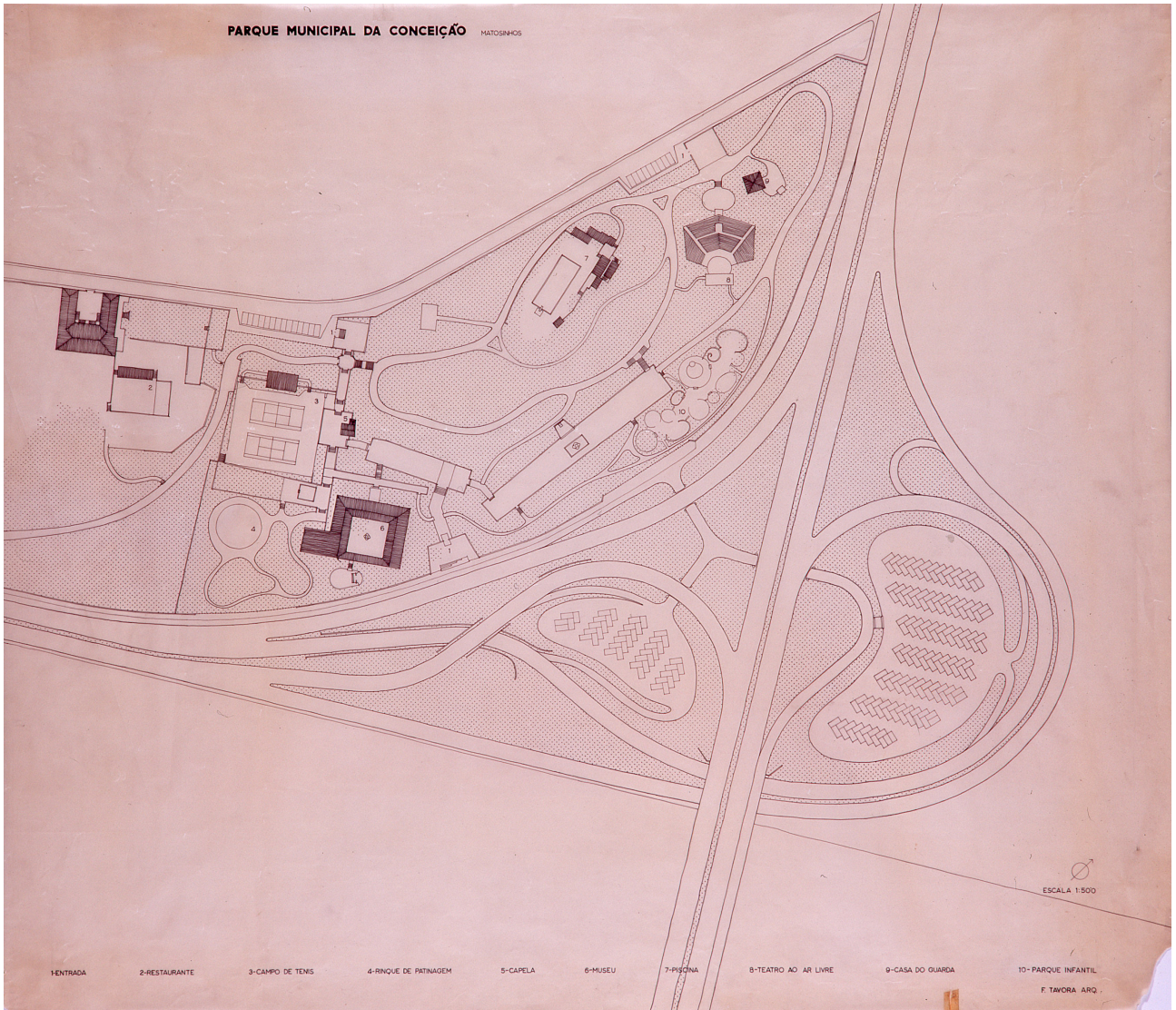
N. Portas, "Projecto do parque municipal da Conceição - Matosinhos (1957)", *Arquitectura*, no. 71 (1961): 25; G. Borella, *La scuola di Porto* (Milano: Clup-CittàStudi, 1991), 54-55; L. Trigueiros, *Fernando Távora* (Lisboa: Editorial Blau, 1993), 64-68; M. Krüger, "Quinta da Conceição", in *Porto 1901-2001. Guia de arquitectura moderna* (Porto: Livreria Civilização Editora, 2001), n. p.; A. Esposito, G. Leoni, *Fernando Távora. Opera completa* (Milano: Electa, 2003), 106-115; N. Fernández, "Parque municipal y piscina de la Quinta da Conceição 1965-1960. Reinventar la memoria. Propuestas desde una «Tercera vía»", in *Veintiún edificios de arquitectura moderna en Oporto*, D. Villalobos, S. Pérez eds., (Valladolid: Departamento de Teoría de la Arquitectura y Proyectos Arquitectónicos, 2010), 175-192; J. A. Bandeirinha (ed.), *Fernando Távora. Modernidade permanente Permanenet modernity* (Matosinhos: Casa da Arquitectura, 2012), 426-431.

IMG.1: City park Quinta da Conceição e de Santiago, Matosinhos 1993, sketches for the connection solution, 1993, ink and colours on paper. IMG.2-3: City park Quinta da Conceição, Matosinhos 1956-1960, general plans, ink and colours on paper. IMG.4: A. Siza, sketch for a first version of the pool 1958, pencil and charcoal on paper (FIMS/AFT).

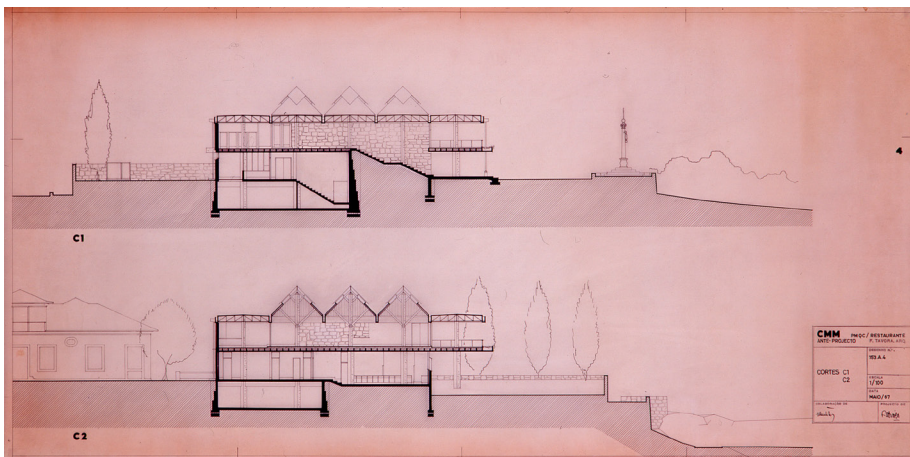
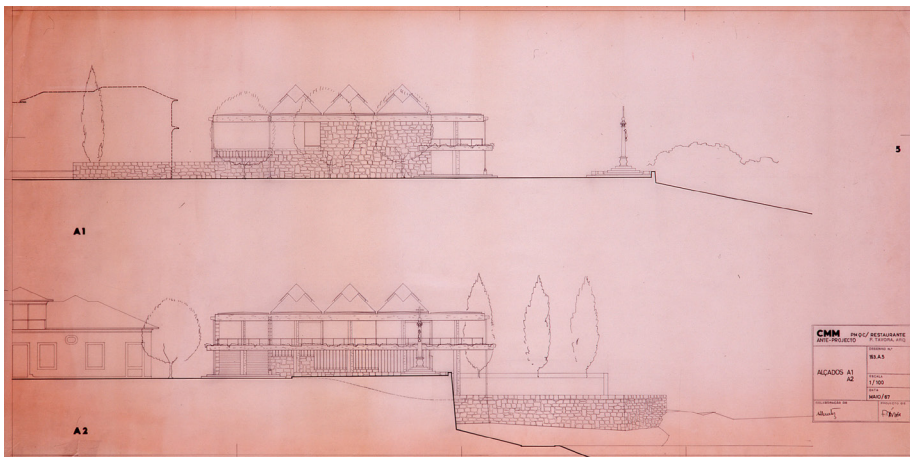
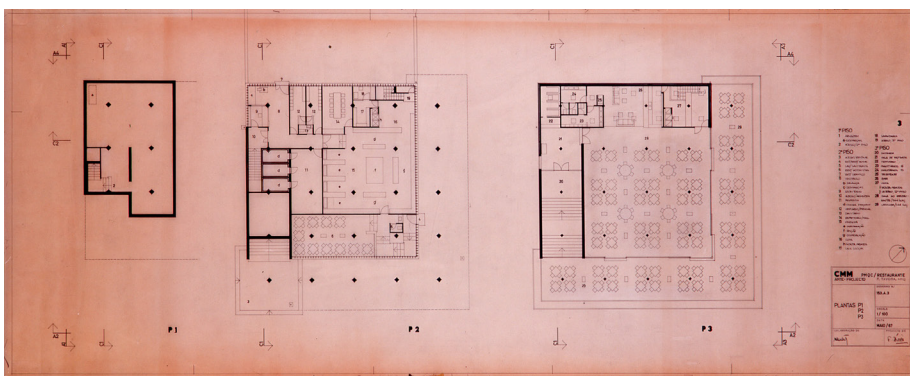
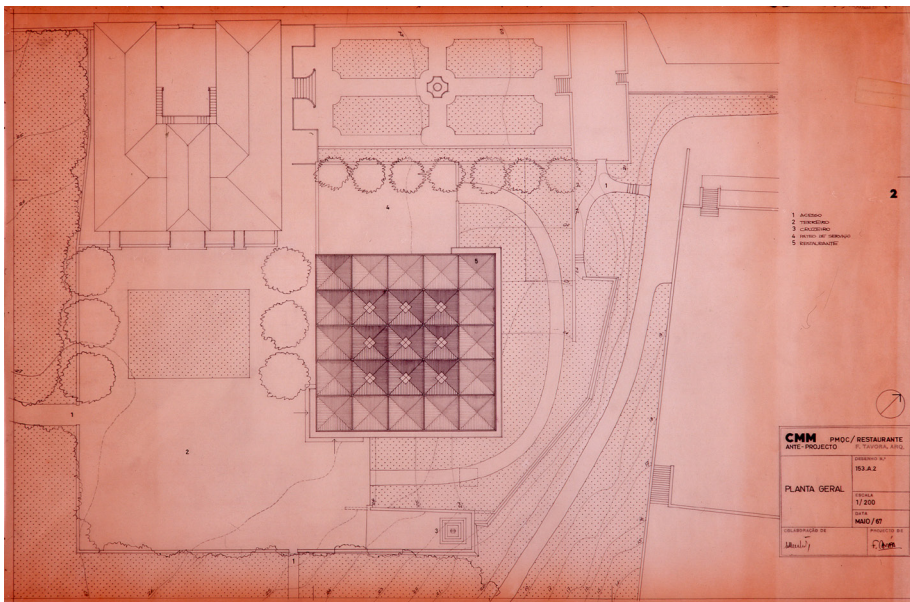


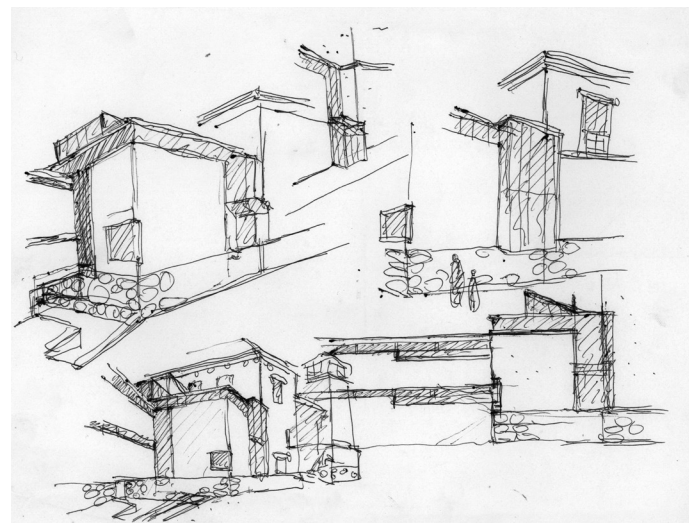
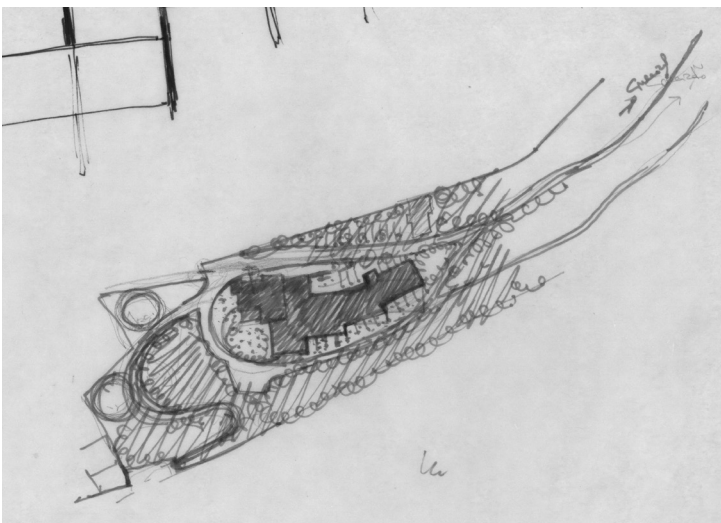
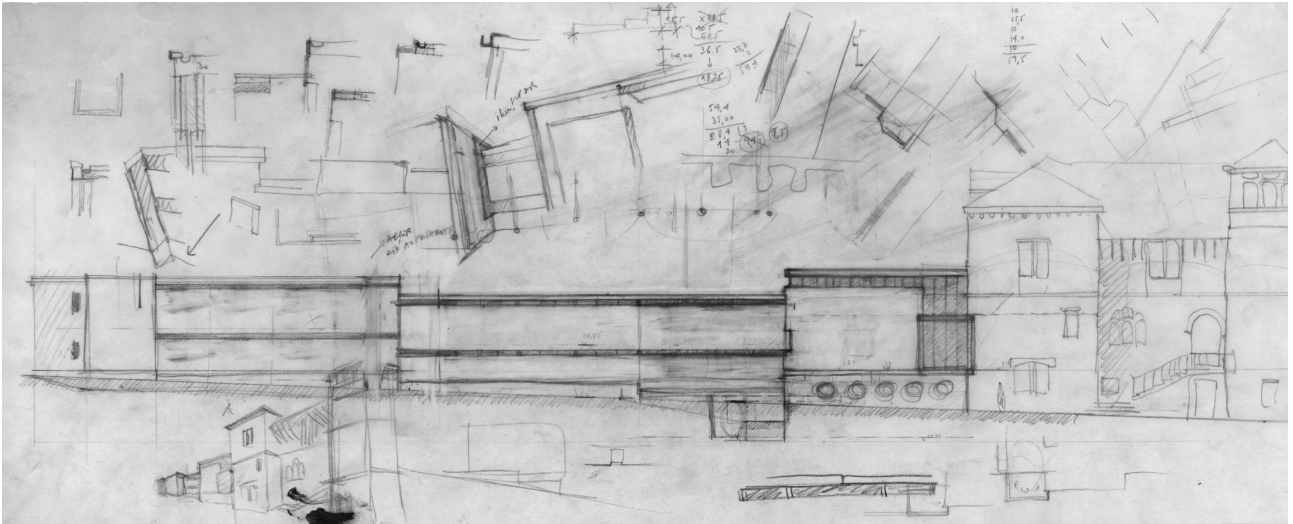
<https://doi.org/10.6092/issn.2611-0075/19850> | ISSN 2611-0075
Copyright © 2022 Giovanni Bellucci



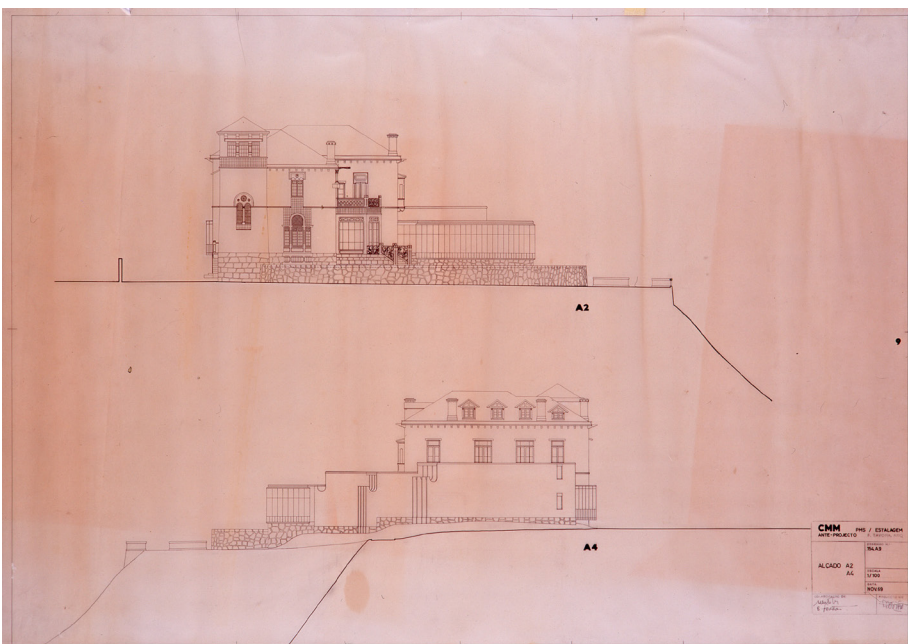


IMG.5: City Park Quinta da Conceição, Matosinhos 1956-1960, general plan, tracing paper. IMG.6: Museum of City Park Quinta da Conceição, Matosinhos 1957, general plan, elevations and design sketches, pencil and colours on paper. IMG.7: Restaurant of City Park Quinta da Conceição, Matosinhos 1967, general plan, tracing paper; IMG.8: floors plan, tracing paper; IMG.9: elevations, tracing paper; IMG.10: sections, tracing paper (FIMS/AFT).

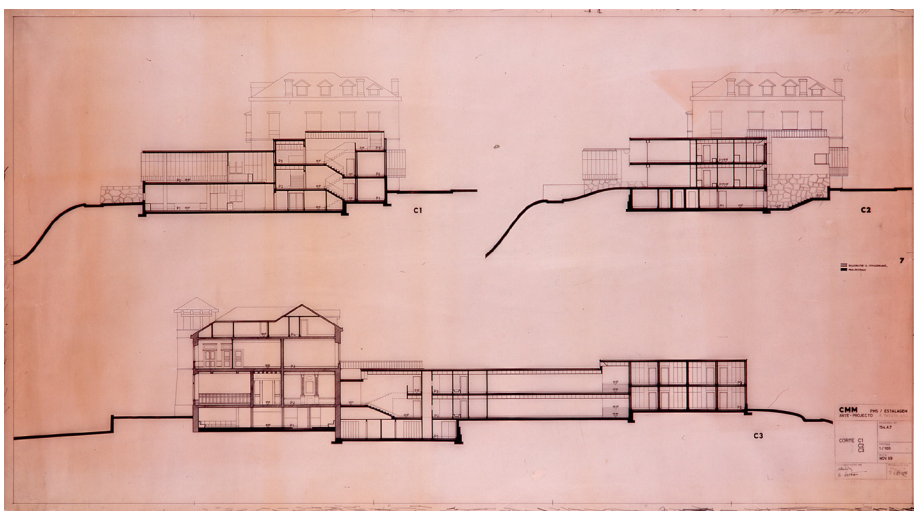
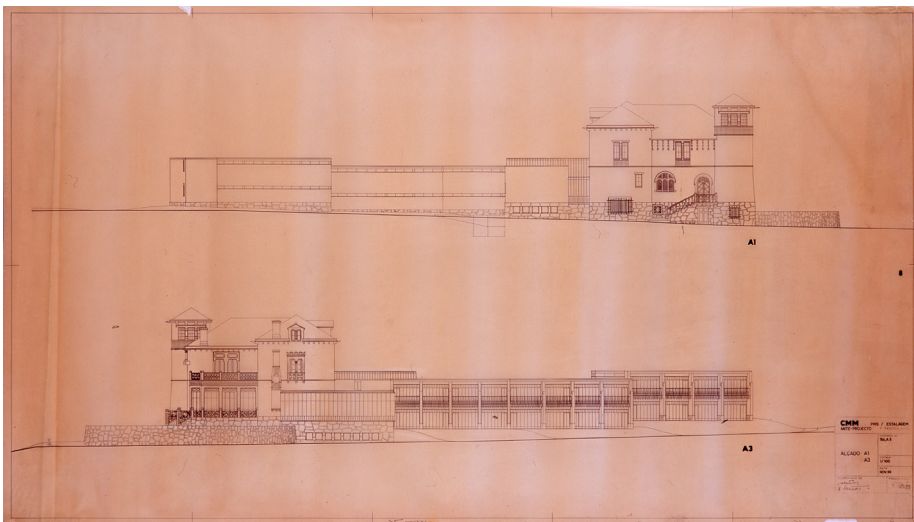
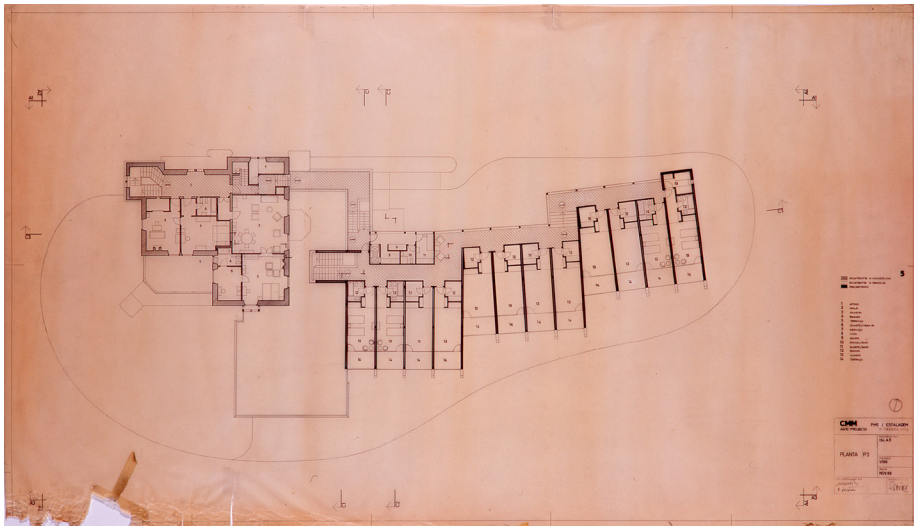


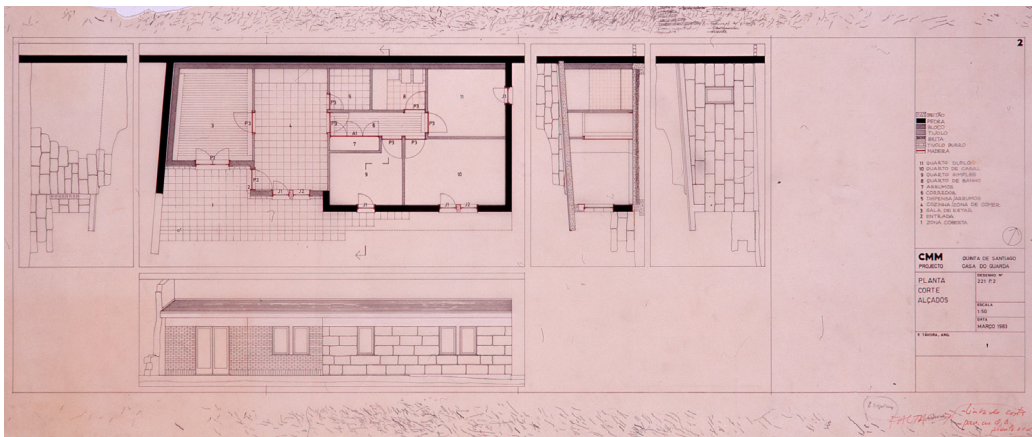
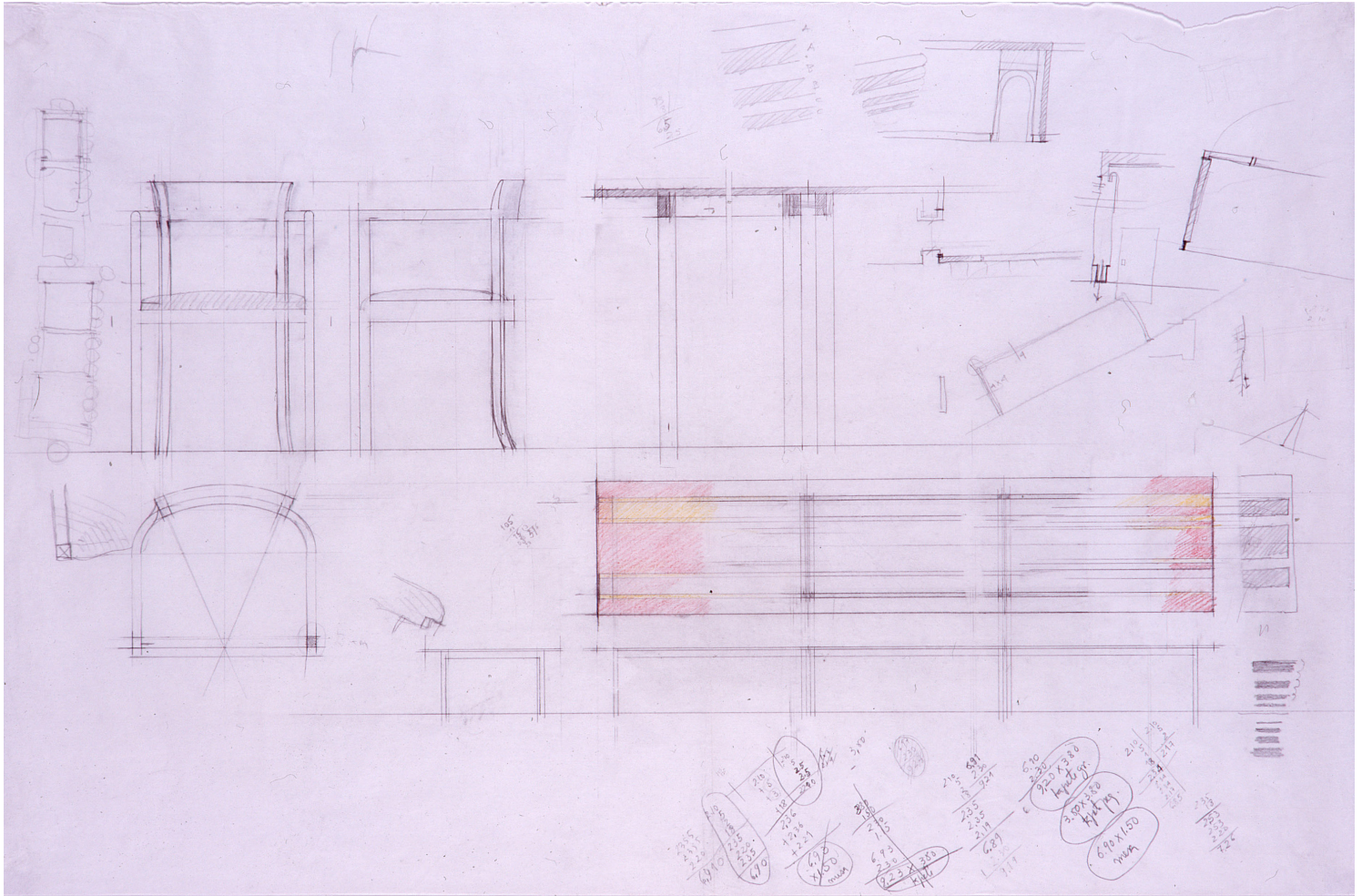


- | | |
|----|----|
| 11 | 15 |
| 12 | 13 |
| 14 | 17 |
| | 18 |



IMG.11: City Park Quinta da Conceição, Matosinhos 1956-1960, Hotel, elevation and design sketches, pencil and charcoal on paper; IMG.12, general plan sketch, pencil and charcoal on paper; IMG.13: Pousada of Quinta de Santiago, Matosinhos 1956, design sketches, pencil and charcoal on paper. IMG.14: elevations, tracing paper; IMG.15-16: floors plan, tracing paper; IMG.17: elevations, tracing paper; IMG.18: sections, floors plan, tracing paper (FIMS/AFT).





19

21

20

22

IMG.19: Hotel in the Quinta de Santiago park, Matosinhos 1969, furniture design, pencil and colours on paper; IMG.20: refurbishment of the Guardian house, plan, section, elevations, heliographic copy; IMG.21: chapel forecourt, general plan and section, tracing paper; IMG.22: paths near the red patio, general plan, tracing paper (FIMS/AFT).