

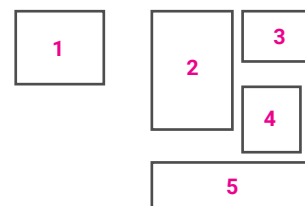
Pousada Santa Marinha da Costa

ARCHIVAL DATA

DATE (design and realization)	1972-1985
PLACE/ADDRESS	Guimarães
COLLABORATORS	(along with) Bernardo Ferrão, Alfredo Matos Ferreira; Jorge Barros, Francisco Barata, Joaquim Jordão, Manuel Magalhães, Agostinho Ramos, Gil Carneiro, José Bernardo Távora, Fernando Barroso
CUSTOMER	General Directorate for National Buildings and Monuments
SOURCES	Fundação Marques da Silva, Porto

ESSENTIAL BIBLIOGRAPHY

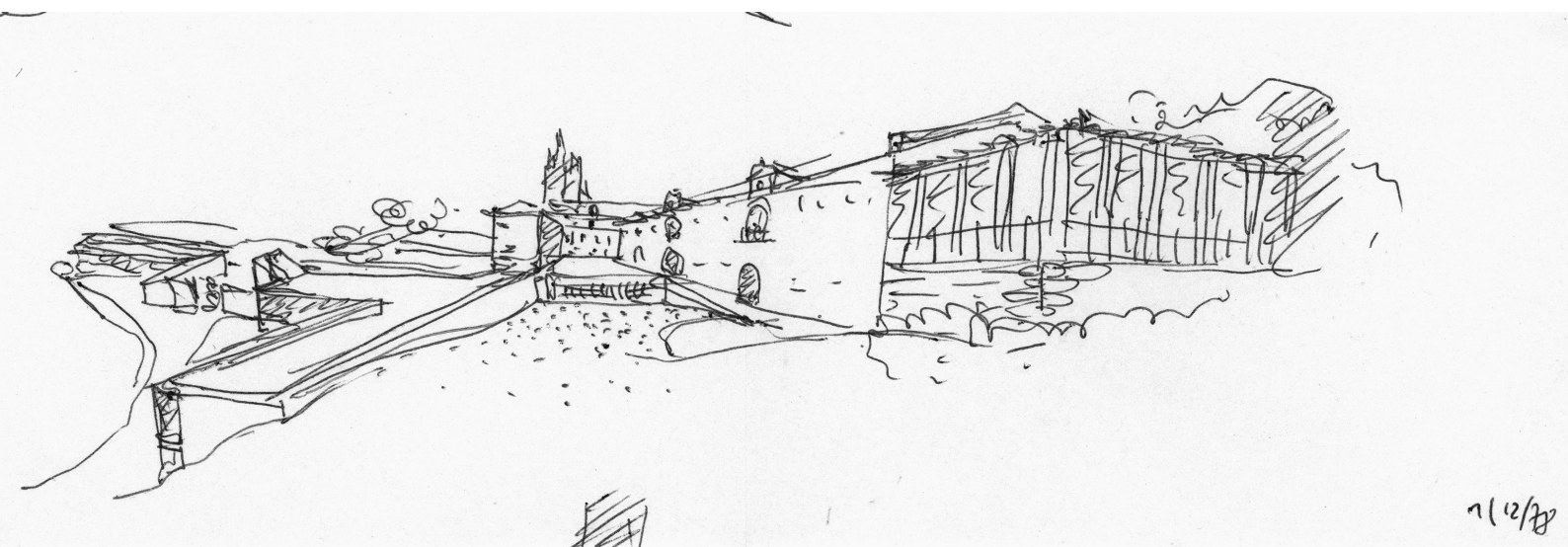
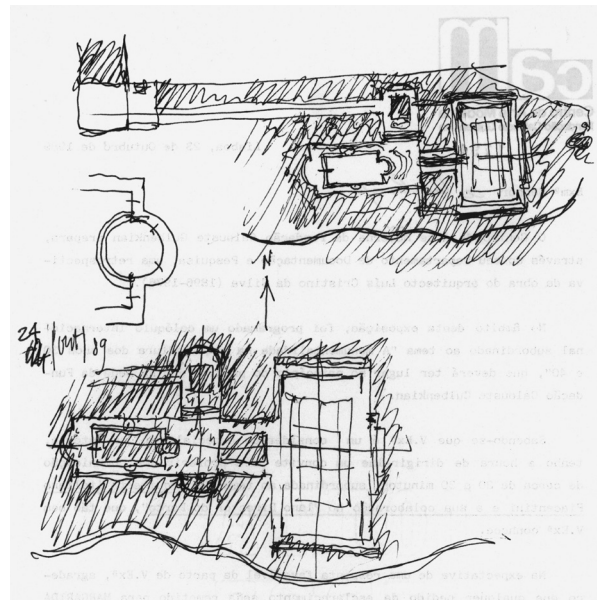
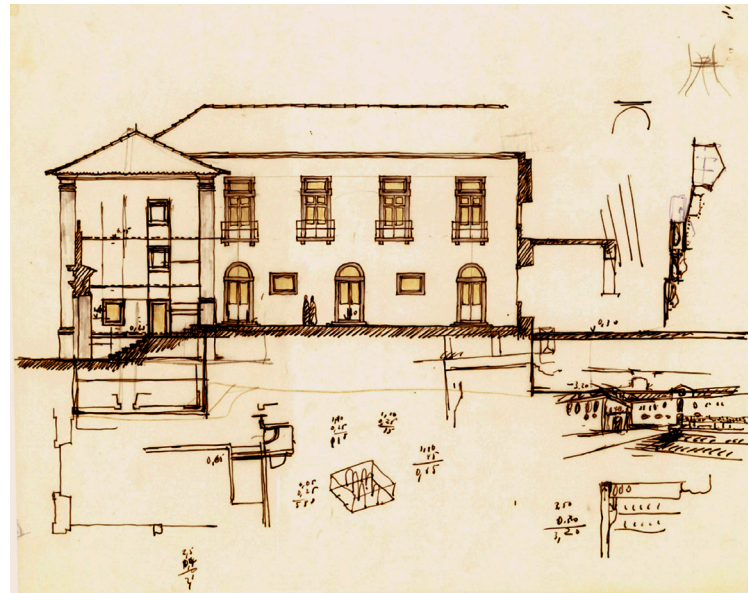
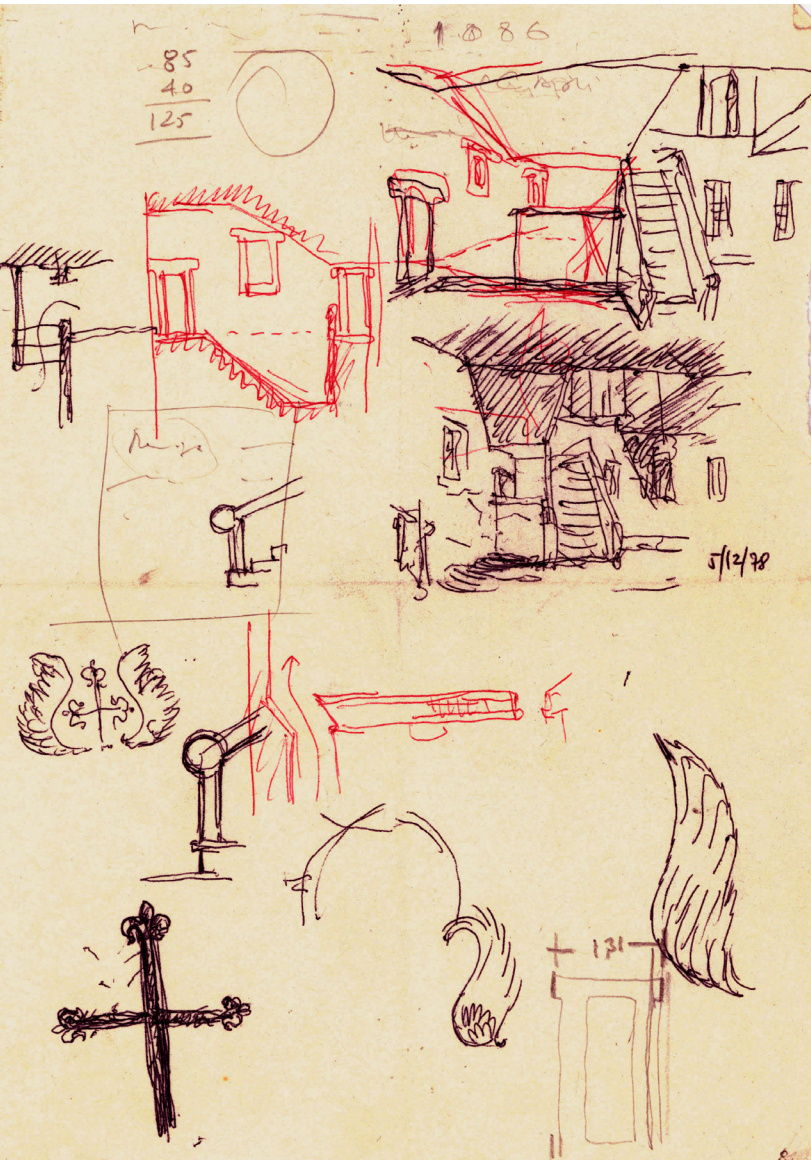
F. Távora, "Transformación del antiguo. Convento de Santa Marinha da Costa Parador de Guimaraes 1976-1985", *Arquitectura. Revista del colegio oficial de arquitectos de Madrid*, no. 261 (1986): 36-40; D. Vitale, "Fernando Távora. Ampliamento di un convento, Guimaraes", *Domus* no. 688 (1987): 32-45; G. Borella, *La scuola di Porto* (Milano: Clup-CittàStudi, 1991), 86-87; L. Trigueiros, *Fernando Távora* (Lisboa: Editorial Blau, 1993), 110-119; A. Esposito, G. Leoni, *Fernando Távora. Opera completa* (Milano: Electa, 2003), 194-201; A. Alves Costa, "Pousada de Santa Marinha da Costa, 1976-1985", *Monumentos. Cidades, Património, Reabilitação*, no. 33 (abril 2003): 102-107; J. A. Bandeirinha (ed.), *Fernando Távora. Modernidade permanente Permanet modernity* (Matosinhos: Casa da Arquitectura, 2012), 342-347. T. Cunha Ferreira, D. Ordóñez Castañón R. Fernandes Póvoas (eds.), *Escola do Porto. Obras - School of Porto. Works*, (Porto: Faculdade de Arquitectura da Universidade do Porto | Centro de Estudos de Arquitectura e Urbanismo, 2023), 173-209.

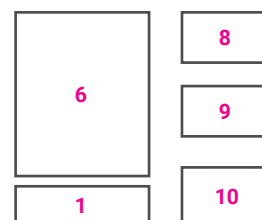
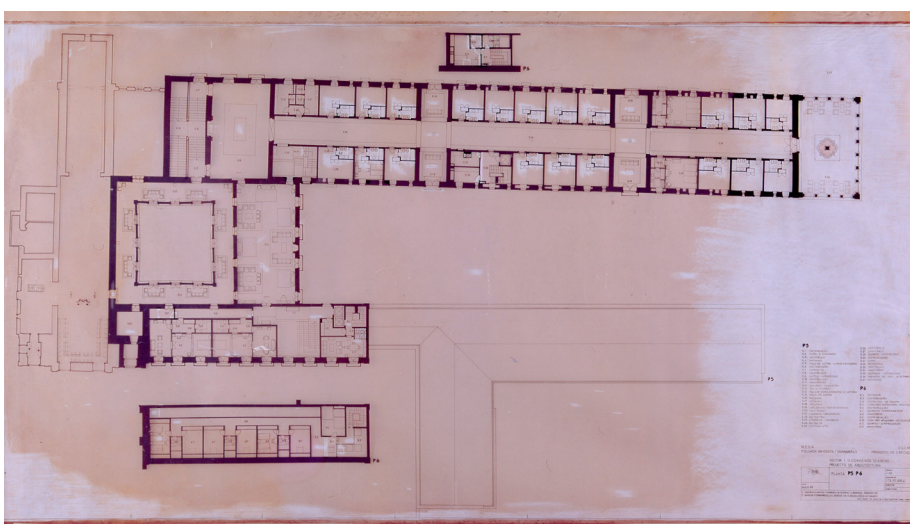
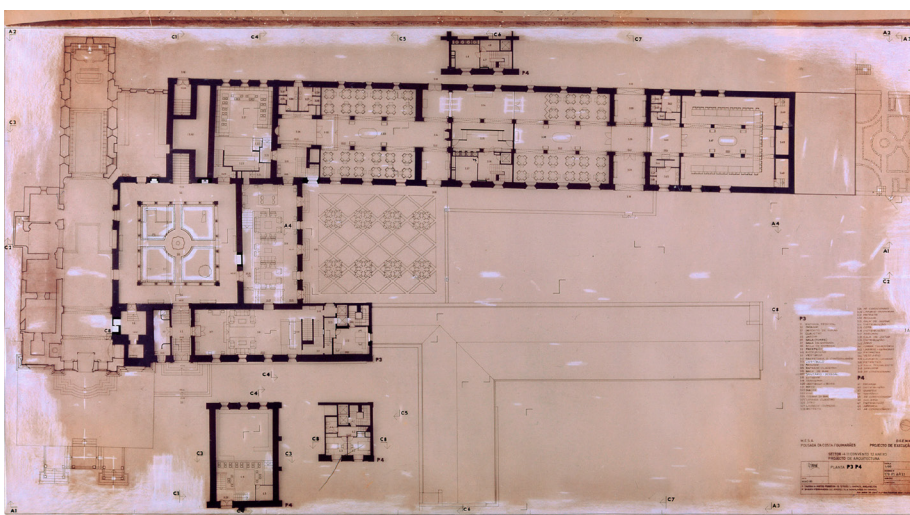
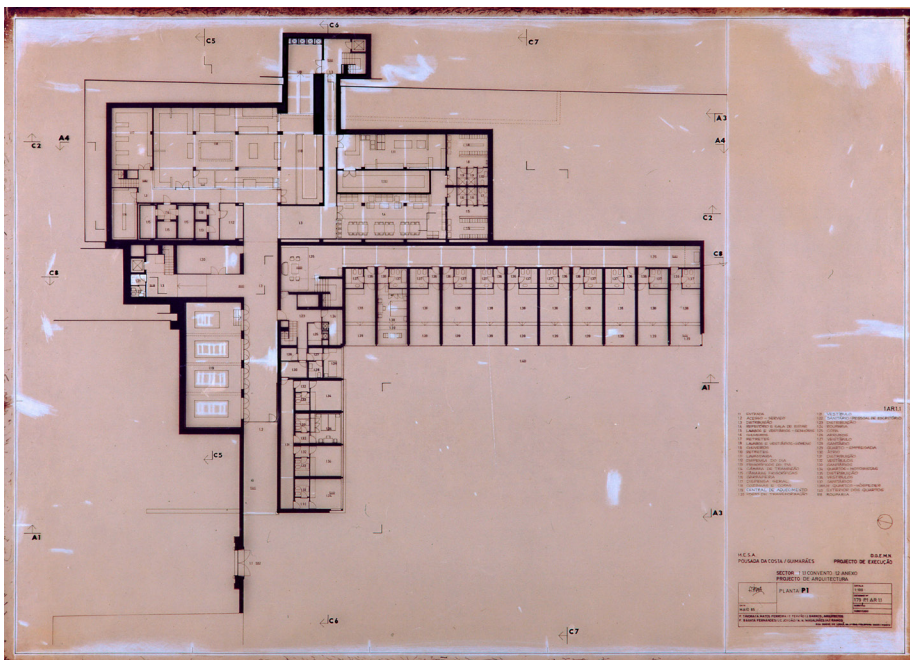


IMG.1-2-3: Pousada Santa Marinha da Costa, Guimarães 1972-1985, project sketches, ink and colours on heliographic copy; IMG.4-5: project sketches, ink on paper (FIMS/AFT).

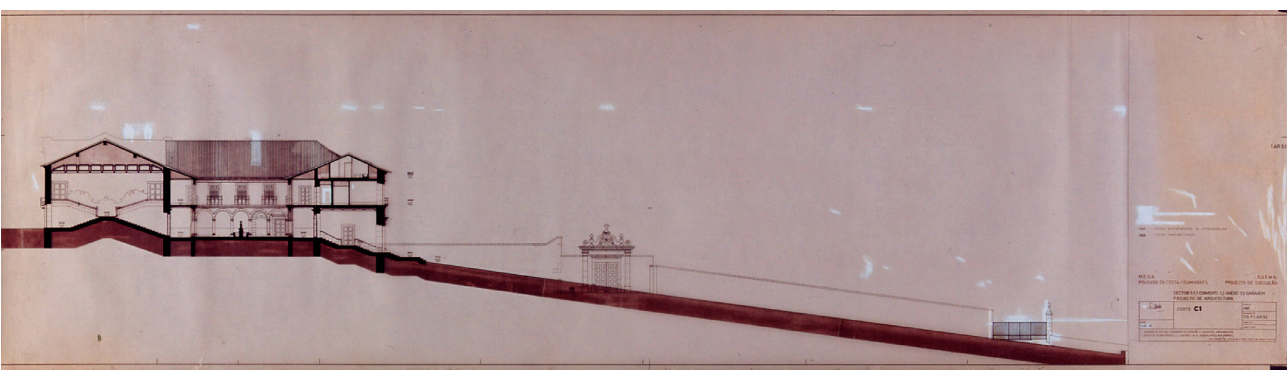
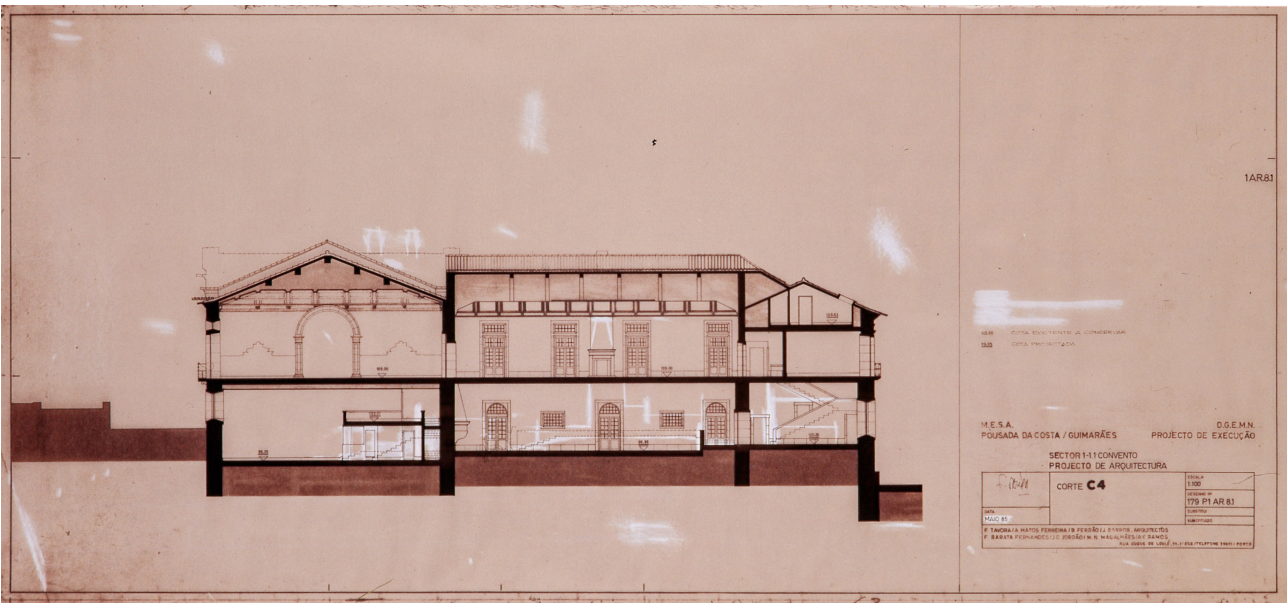
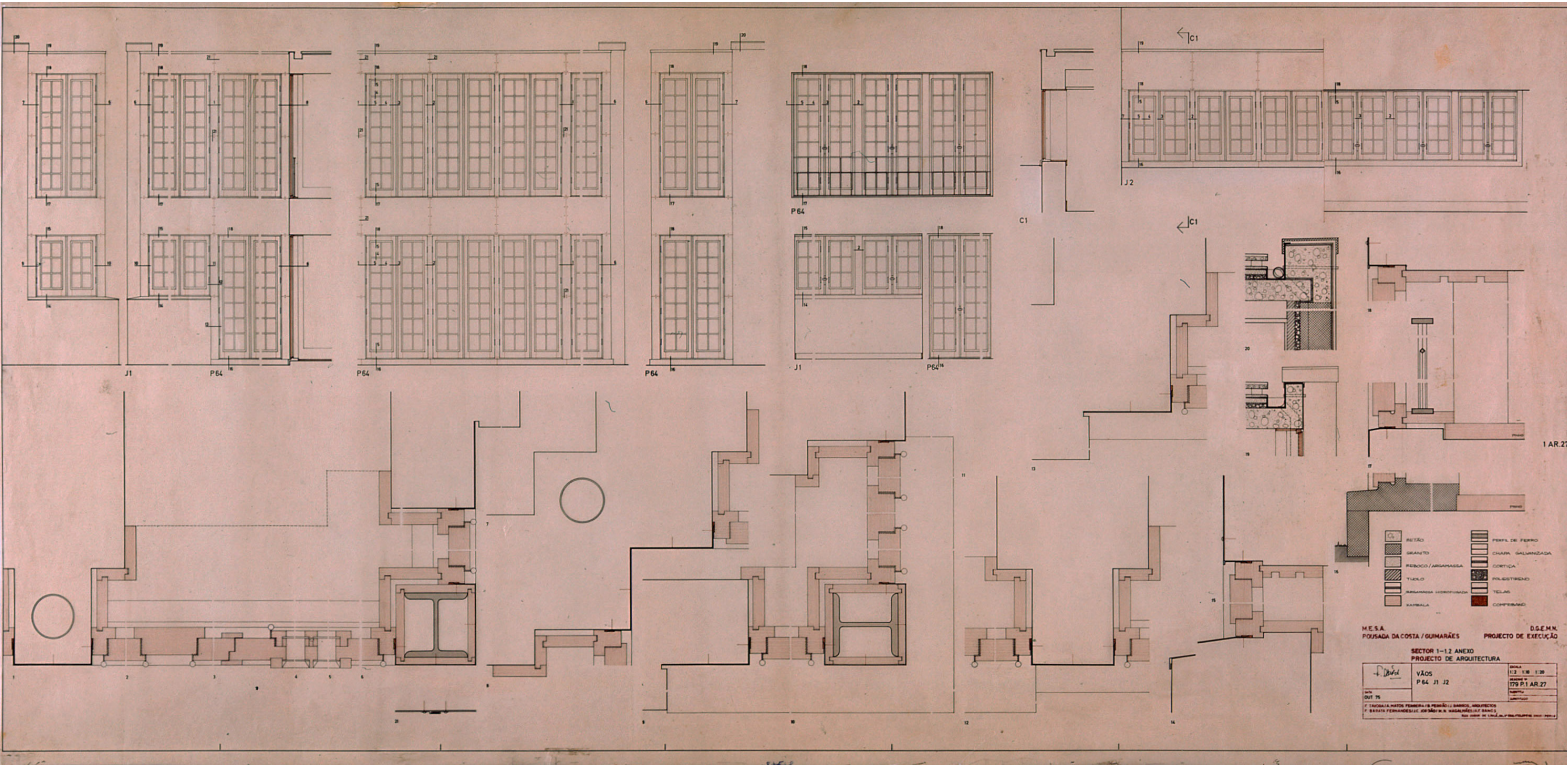


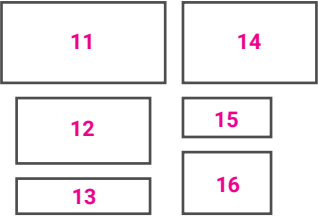
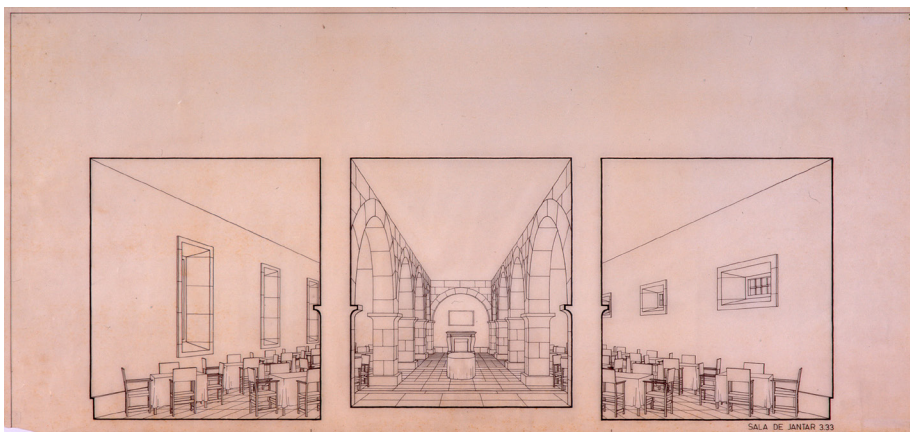
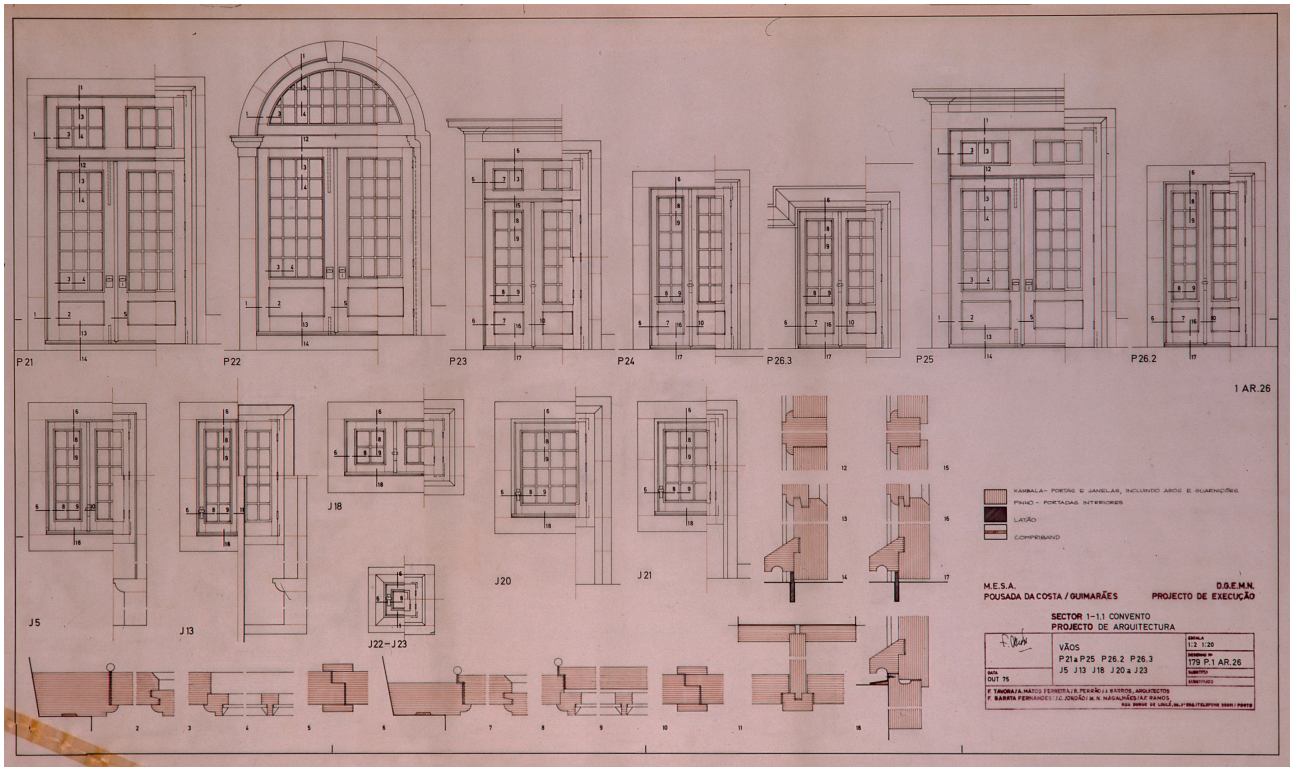
<https://doi.org/10.6092/issn.2611-0075/19843> | ISSN 2611-0075
Copyright © 2022 Giovanni Bellucci





IMG.6: Pousada Santa Marinha da Costa, Guimarães 1972-1985, general plan, heliographic copy; IMG.7: section, heliographic copy; IMG.8-9-10: floor plans, heliographic copy (FIMS/AFT).





IMG.11: Pousada Santa Marinha da Costa, Guimarães 1972-1985, details of wooden window frames, heliographic copy; IMG.12-13: section, heliographic copy; IMG.14: details of wooden window frames, tracing paper; IMG.15-16 interior perspectives, ink on paper (FIMS/AFT).