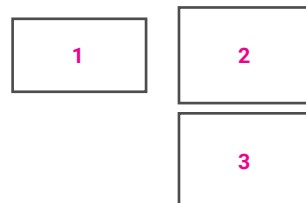


# Renovation of Aveiro City Centre

## ARCHIVAL DATA

DATE (design and partial realization)	<b>1962-1972</b>
PLACE/ADDRESS	<b>Aveiro</b>
COLLABORATORS	<b>Alberto Neves, Joaquim Sampaio</b>
CUSTOMER	<b>Municipal Council of Aveiro</b>
SOURCES	<b>Fundação Marques da Silva, Porto</b>



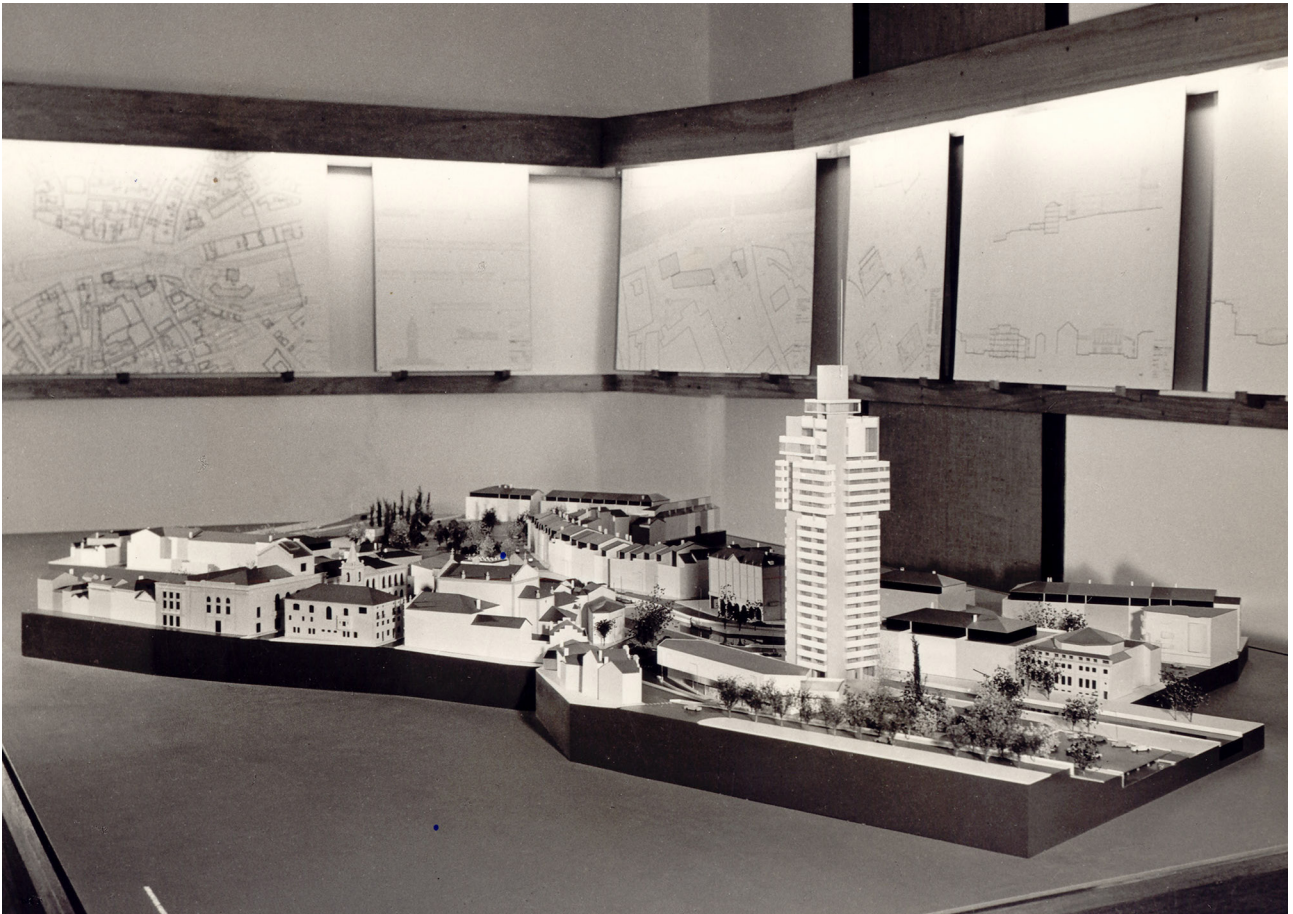
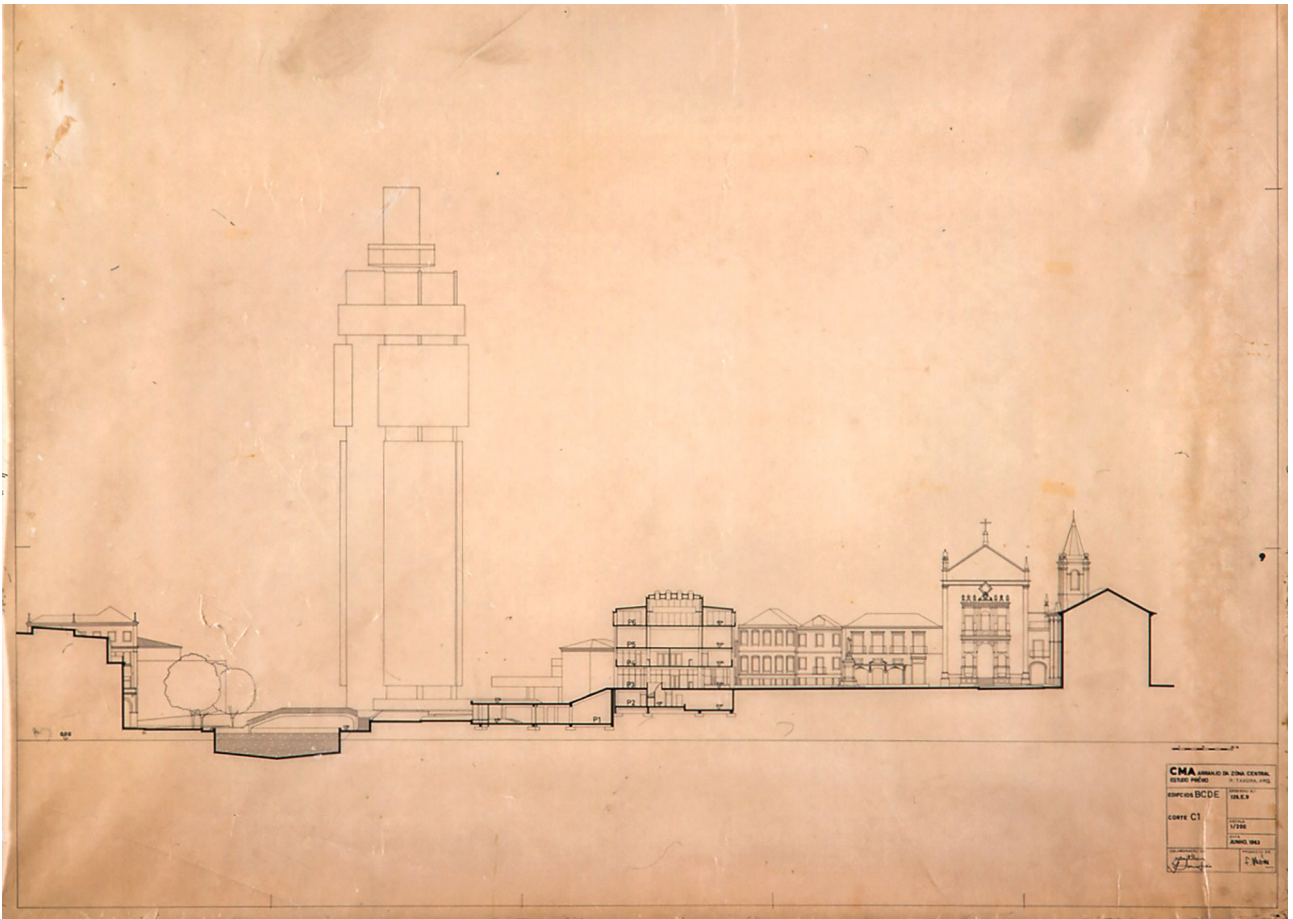
## ESSENTIAL BIBLIOGRAPHY

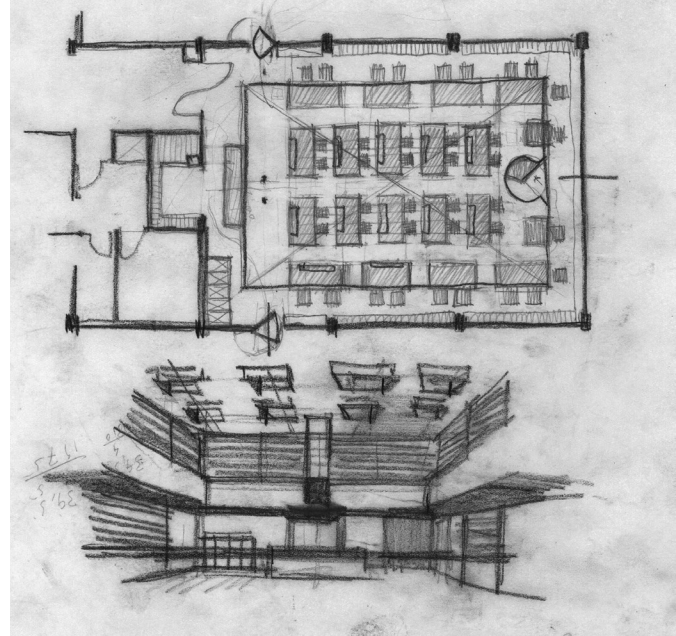
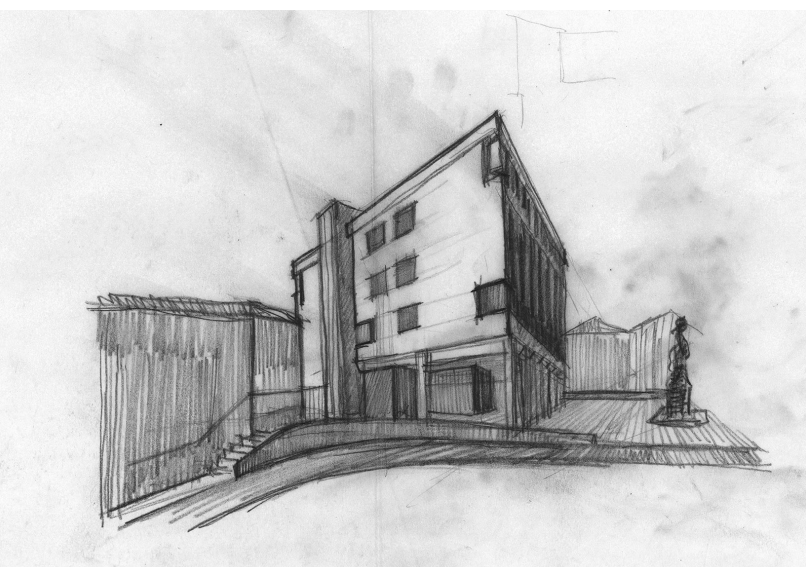
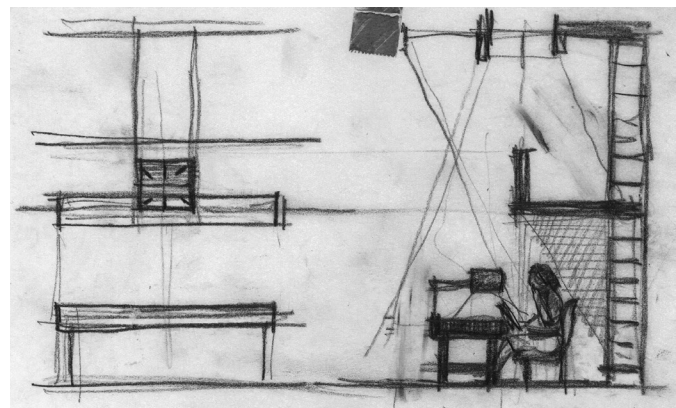
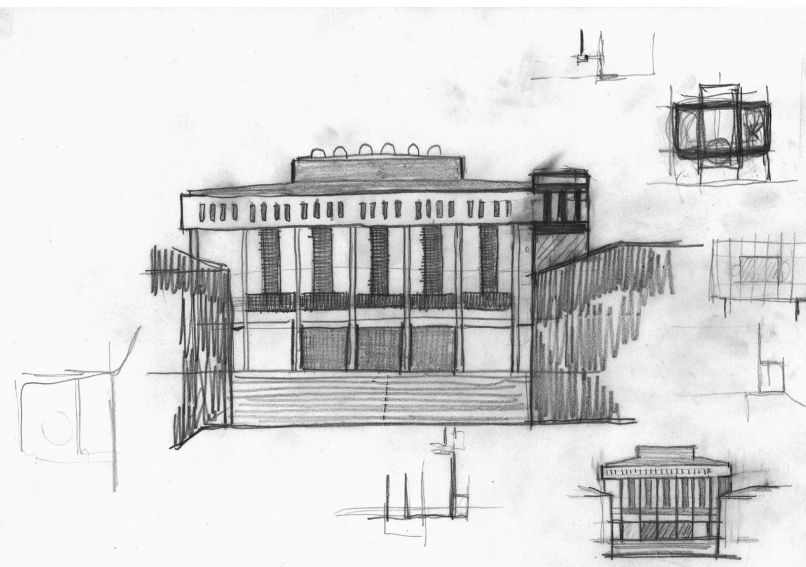
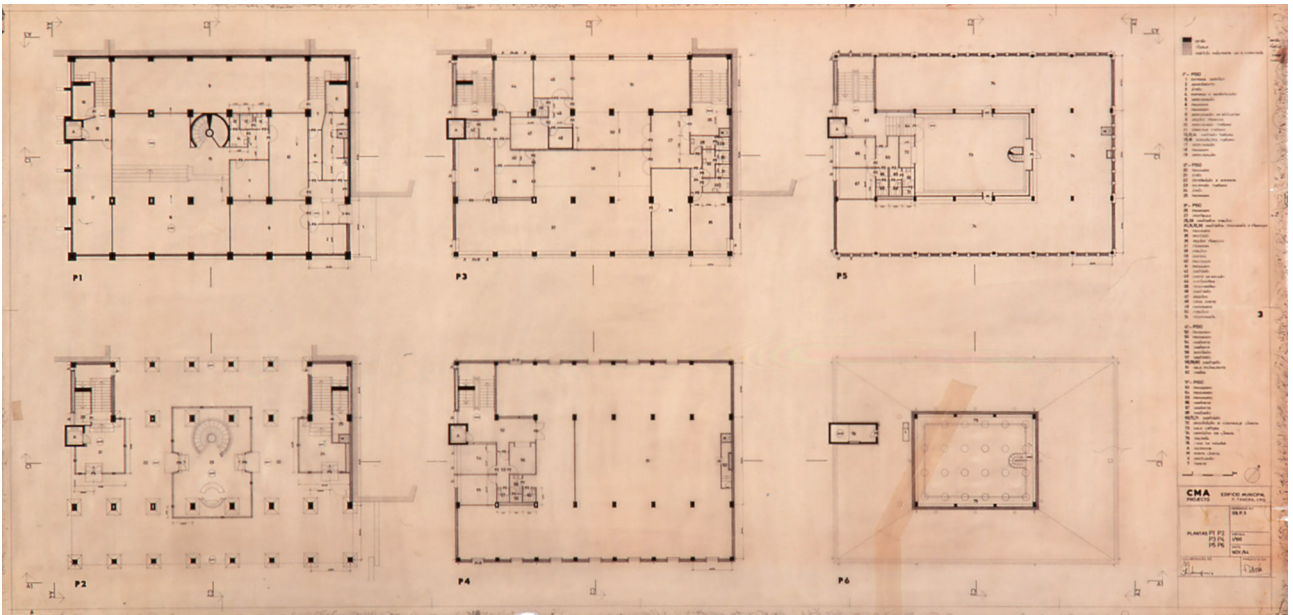
F. Távora, "O Arranjo da zona central de Aveiro", *Arquitectura*, no. 102 (1968): 59-63; L. Trigueiros, *Fernando Távora* (Lisboa: Editorial Blau, 1993), 98-101; A. Esposito, G. Leoni, *Fernando Távora. Opera completa* (Milano: Electa, 2003), 182-187; J. A. Bandeirinha (ed.), *Fernando Távora. Modernidade permanente Permanenet modernity* (Matosinhos: Casa da Arquitectura, 2012), 302-305; C.M. Galante Mendes, *Arranjo da Zona Central de Aveiro, de Fernando Távora (1962-1967). Das influências teóricas às referências práticas*, Master's Degree in Architecture under the supervision of Professor Carlos Martins, Departamento de Arquitectura da FCTUC: 2016.

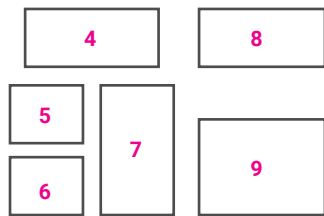
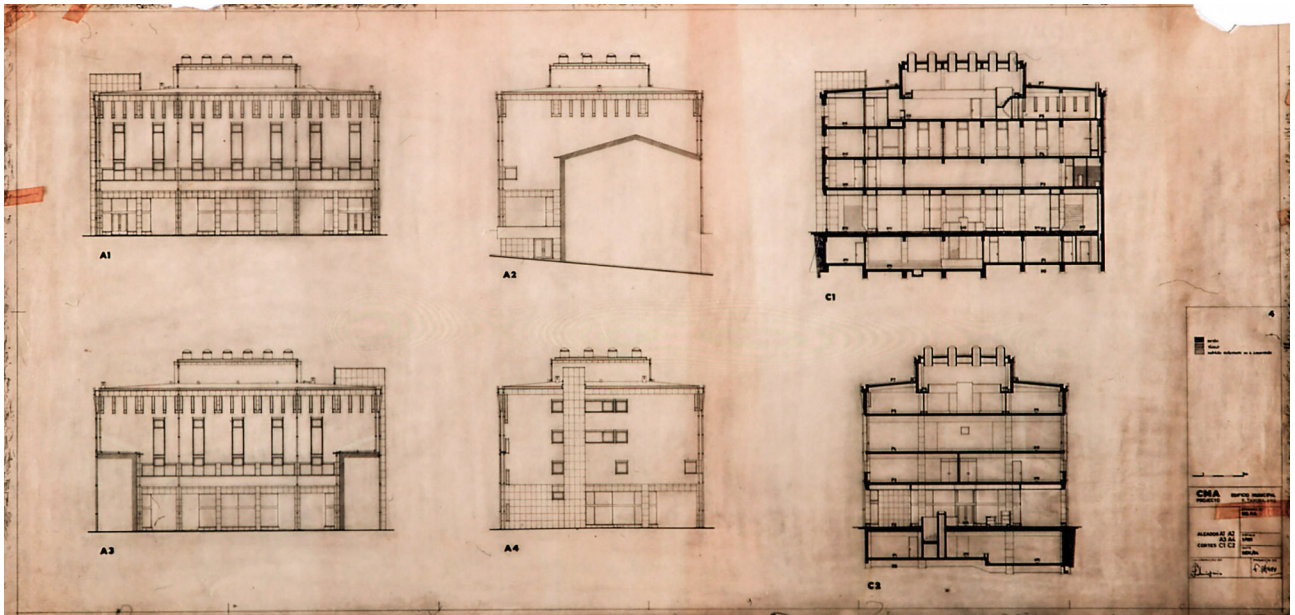
IMG.1: Renovation of the City Centre, Town Hall and Tower, Aveiro 1963-1967, general plan, tracing paper; IMG.2: section at the town hall building, tracing paper; IMG.3: maquette (FIMS/AFT).



<https://doi.org/10.6092/issn.2611-0075/19842> | ISSN 2611-0075  
Copyright © 2022 Giovanni Bellucci

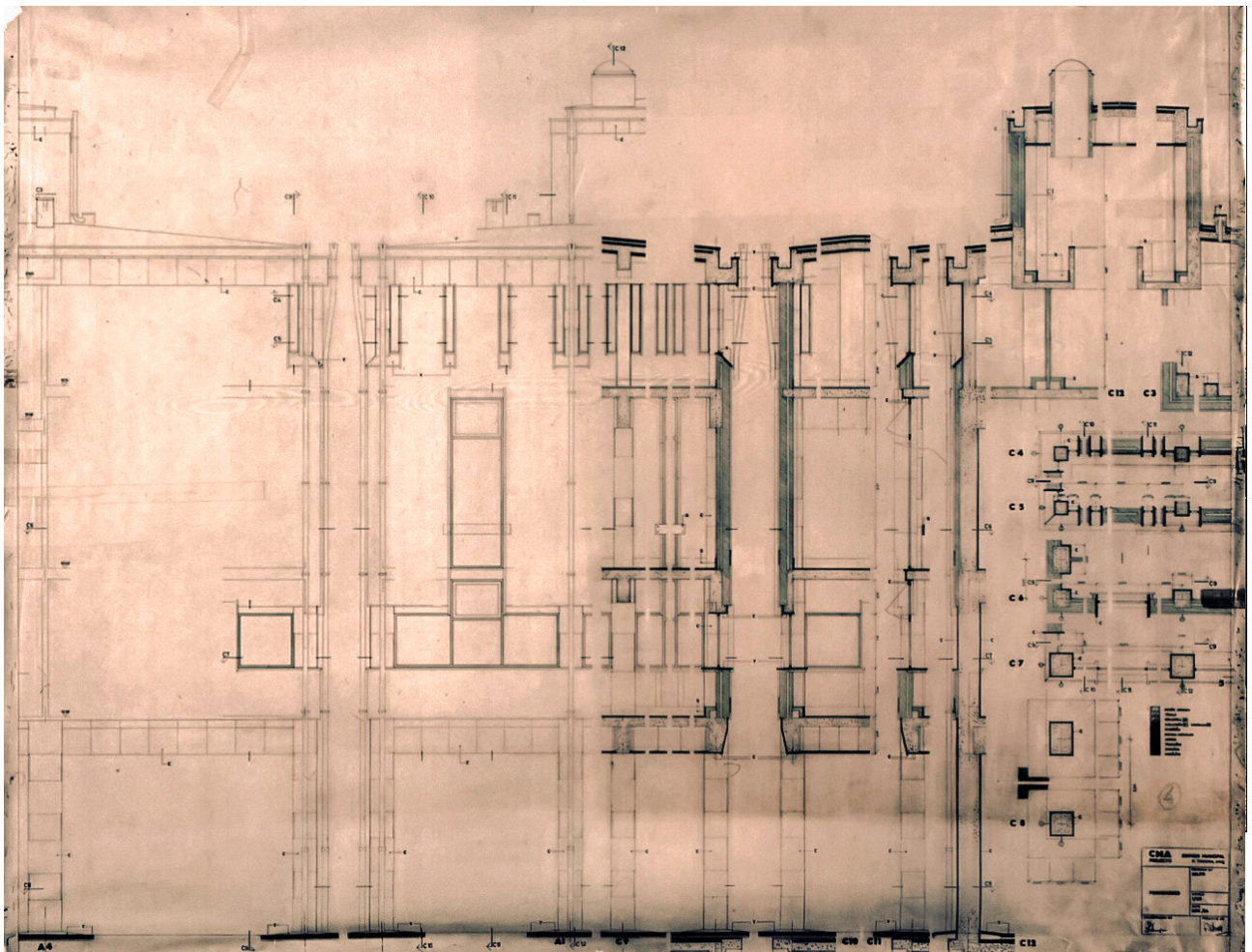


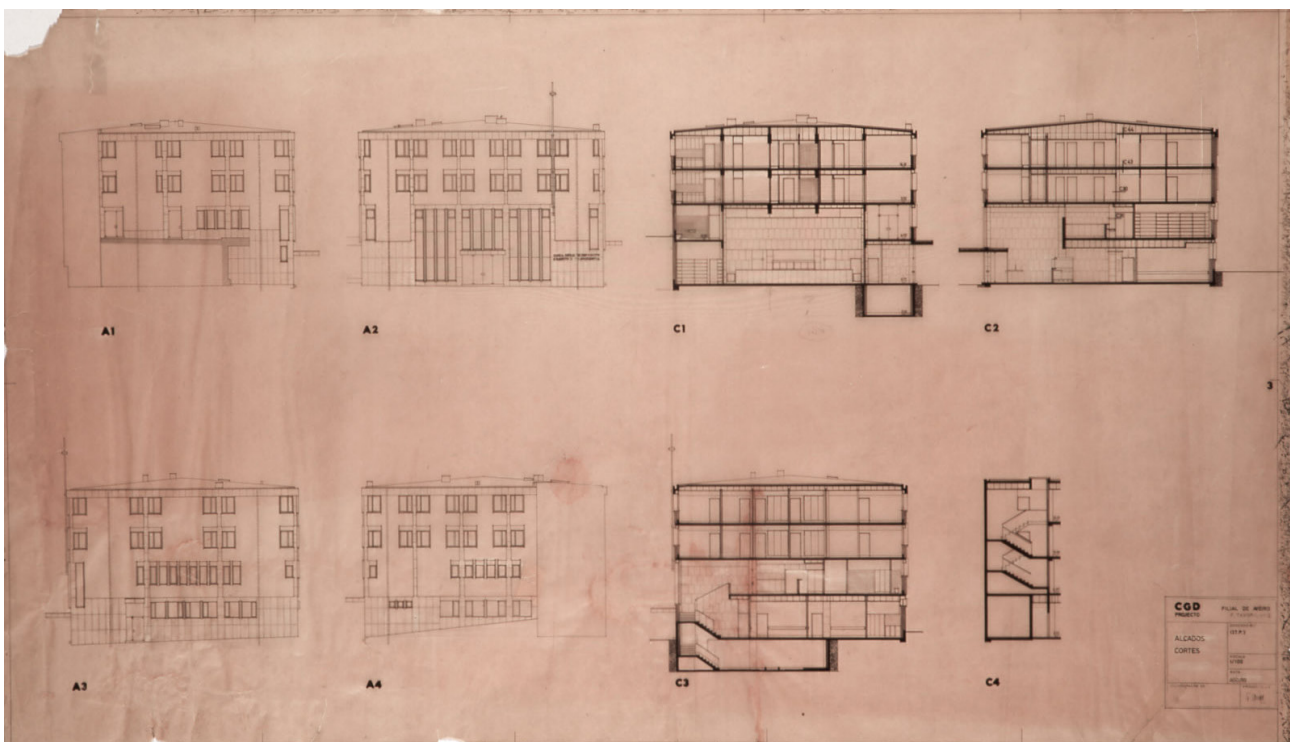
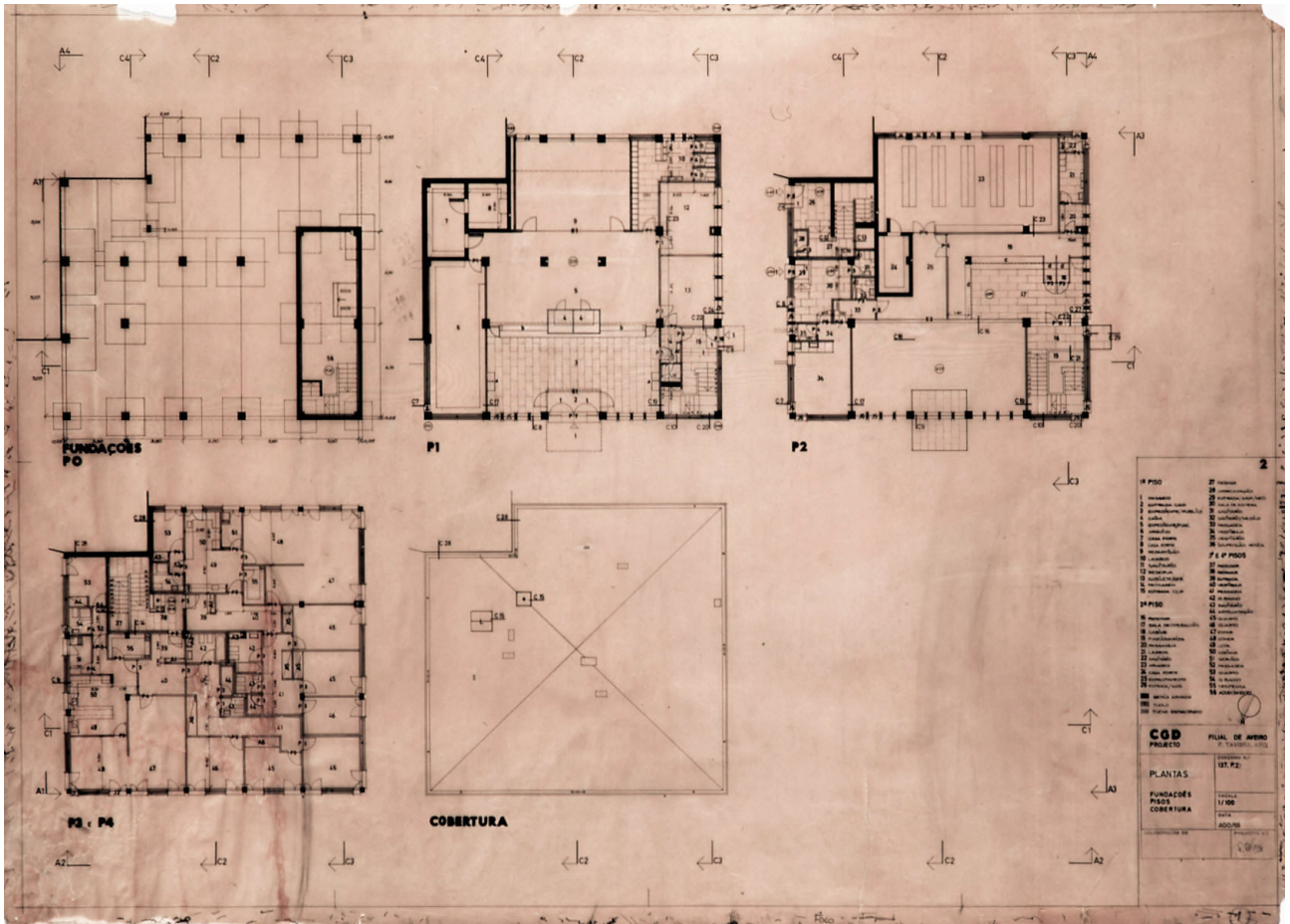


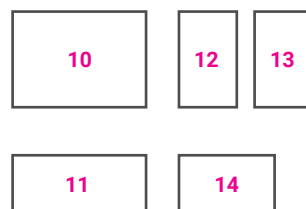
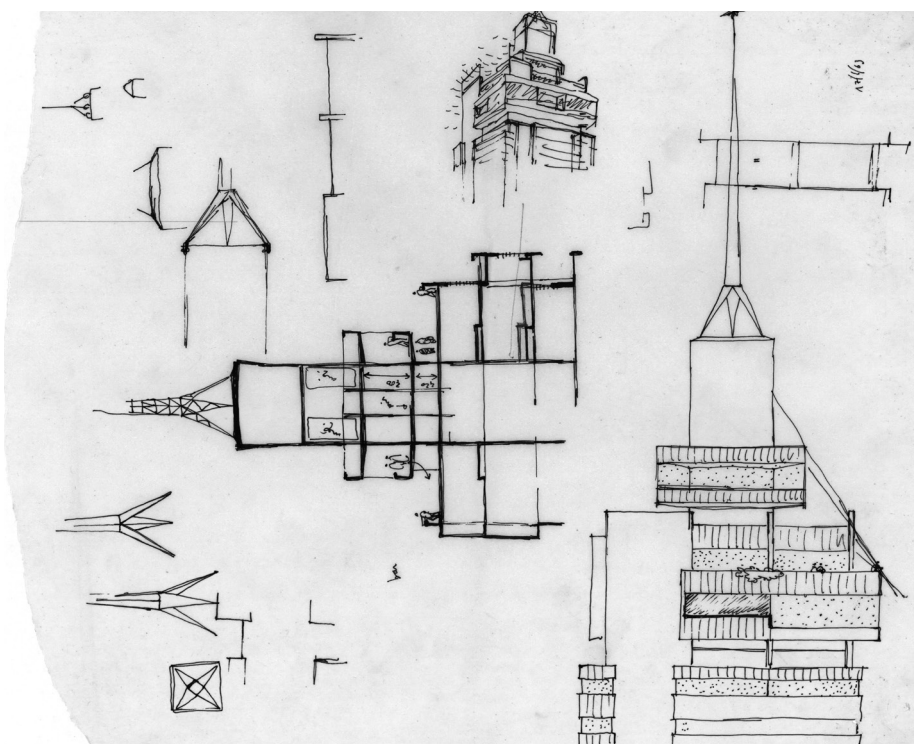
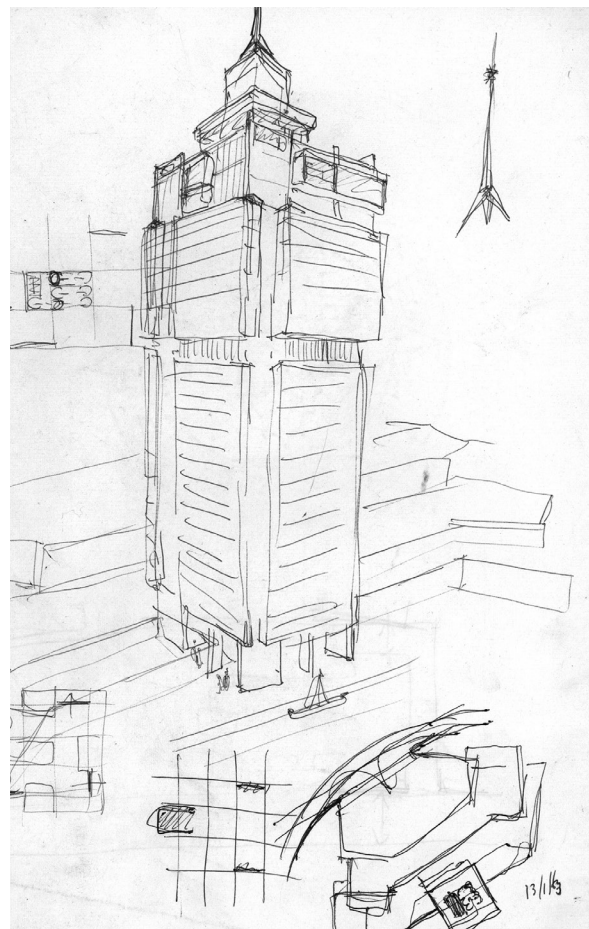
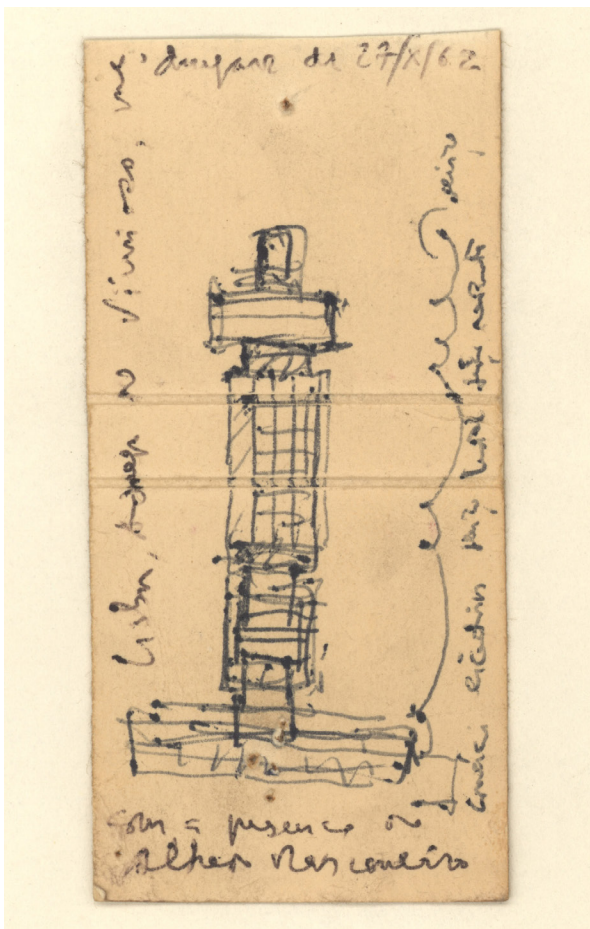


IMG.4: Town hall, Aveiro 1963-1967 (with Alberto Neves and Joaquim Sampaio), floor plans, tracing paper; IMG.5: paper sketch of the main façade and details; IMG.6: paper sketch of the corner solution; IMG.7:

paper sketches of interior solutions and details; IMG.8: elevations and sections, tracing paper; IMG.9: section-elevation of the main façade and details, tracing paper (FIMS/AFT).







IMG.10: Caixa Geral de Depósitos (with A. Neves, J. Sampaio and Bernardo Ferrão), Aveiro 1965-1972, floor plans, tracing paper; IMG.11: elevations and sections, tracing paper (FIMS/AFT).

IMG.12: Project for the "Rumo" Tower (with A. Neves – Commissioned by João Nunes da Rocha), Aveiro 1962, sketch of elevation, charcoal on paper; IMG.13: sketches (perspective and plans), charcoal on paper; IMG.14: sections and details, charcoal on paper (FIMS/AFT).