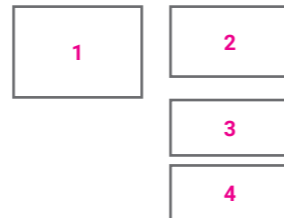


Project for
Hon. Pleydell Bouverie House

ARCHIVAL DATA

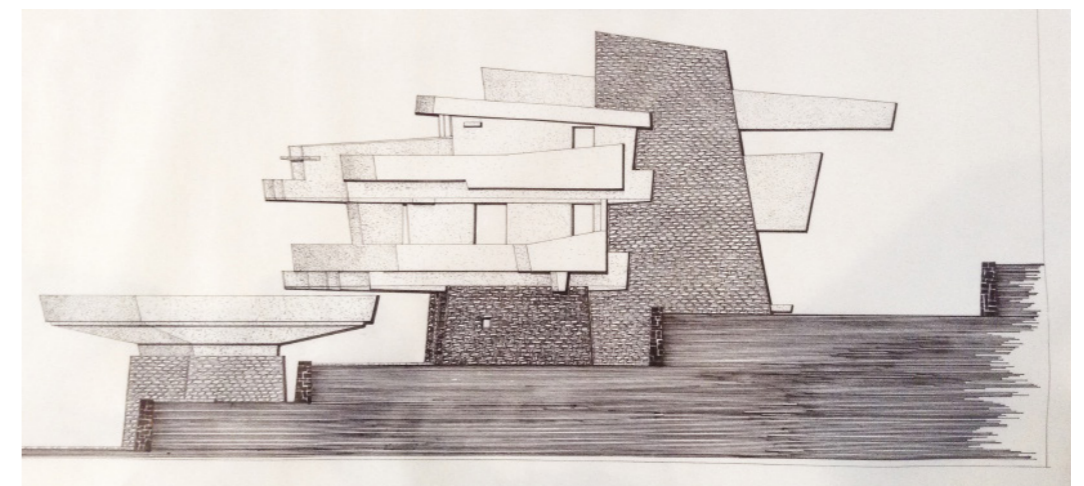
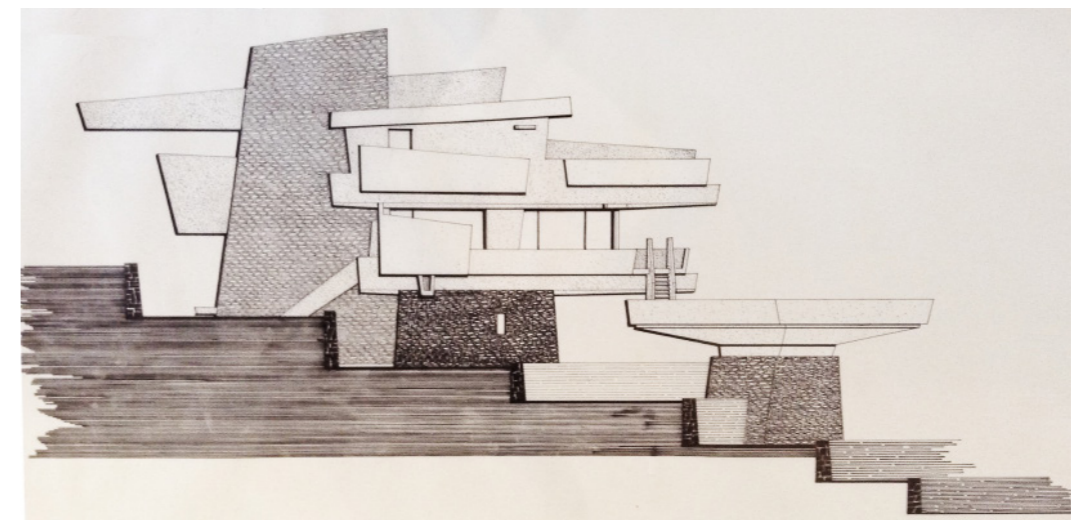
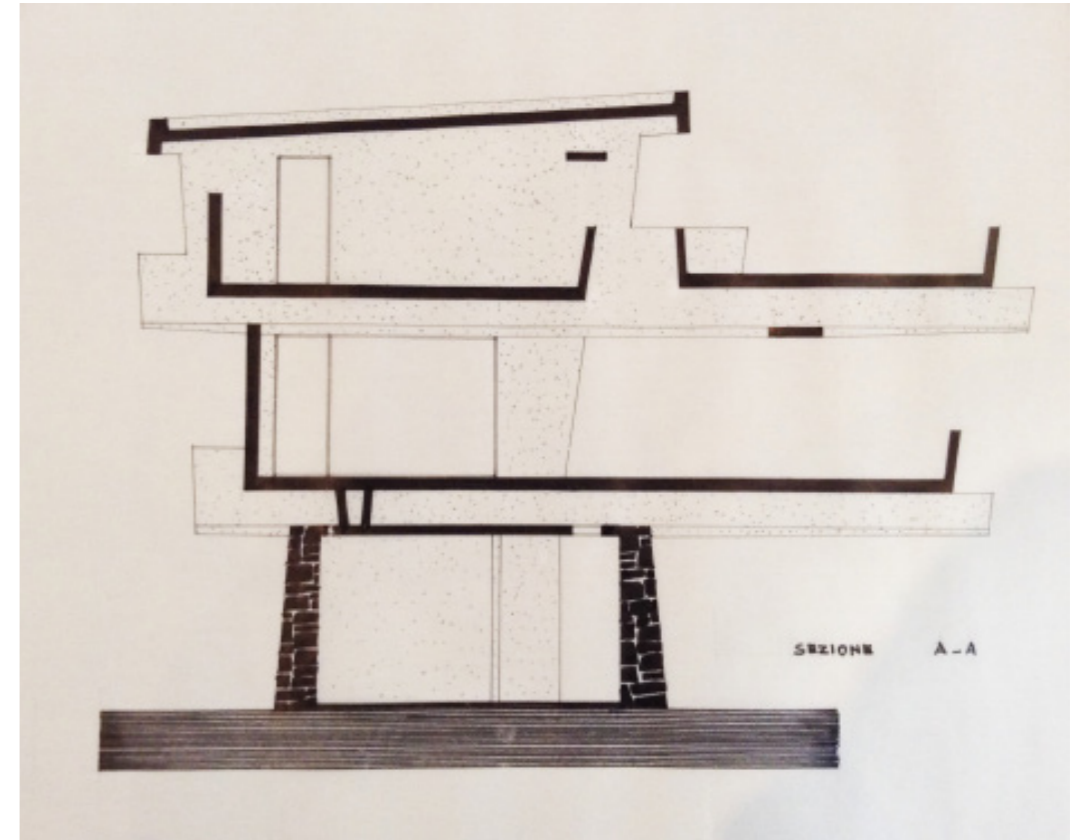
DATE	1958-1960
PLACE-ADDRESS	Marciana, Isola d'Elba (LI)
COLLABORATORS	
CUSTOMER	Mrs. A. E. Pleydell Bouverie
SOURCES	CSAC

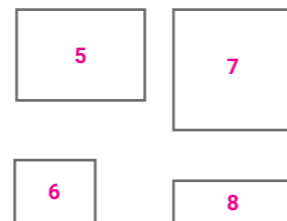
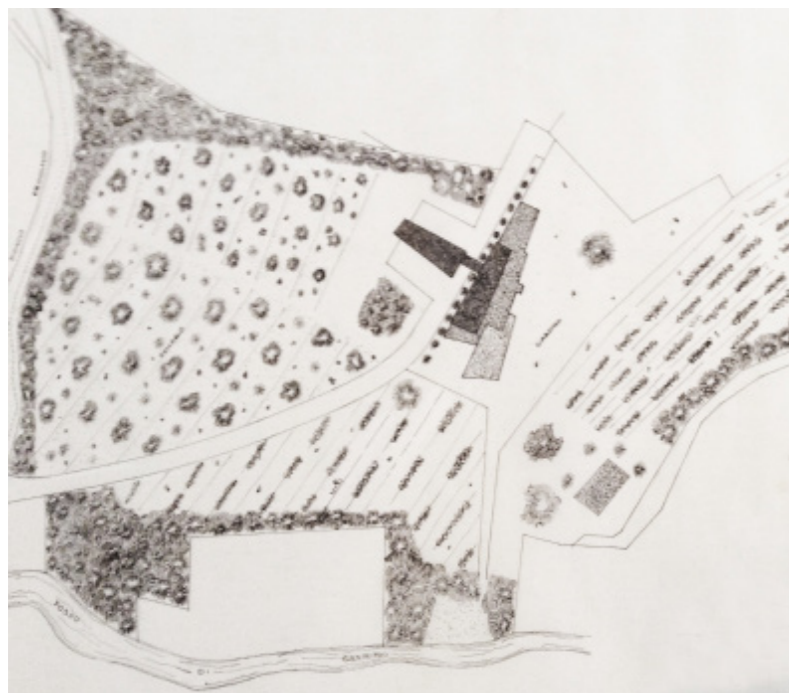
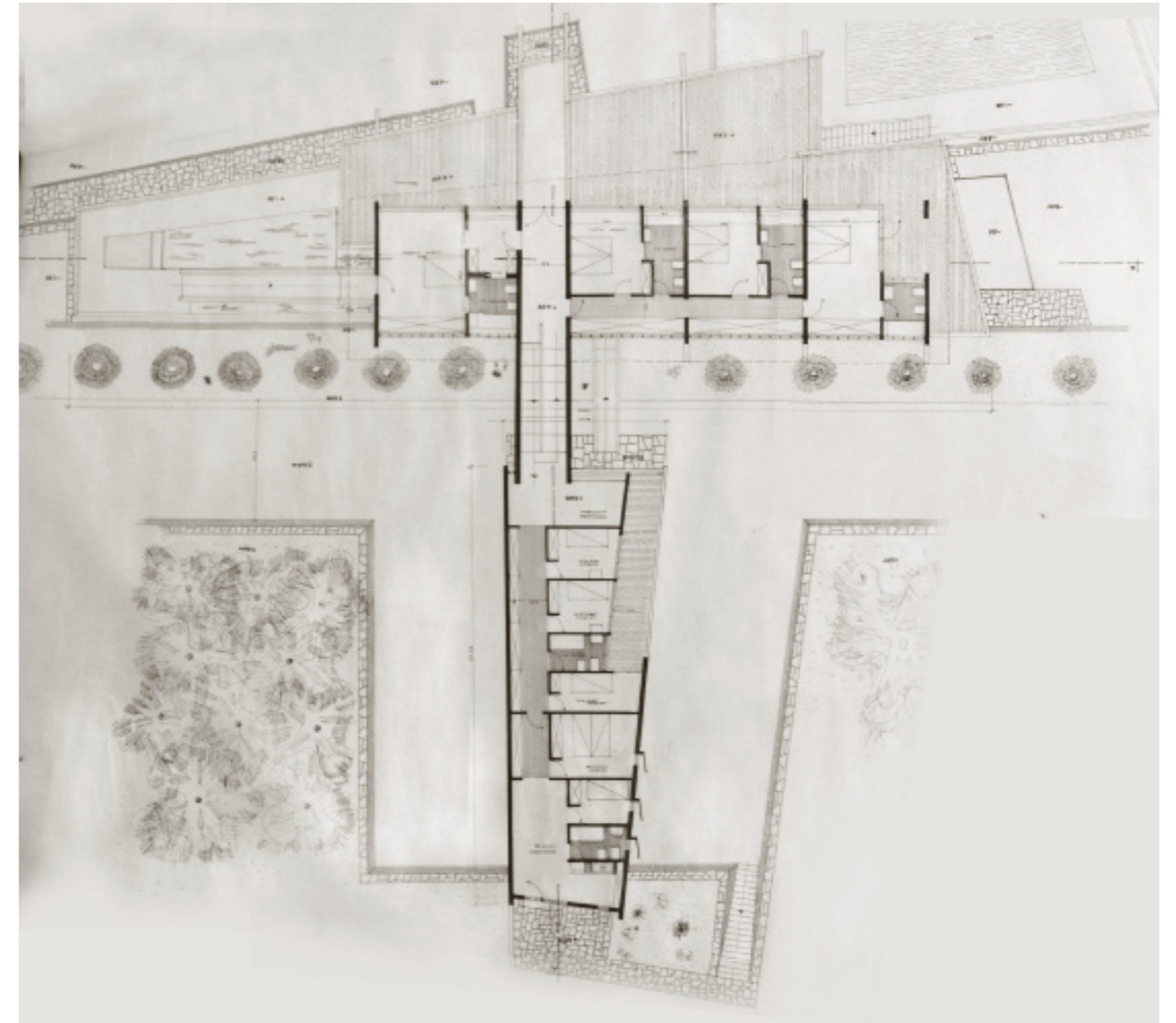
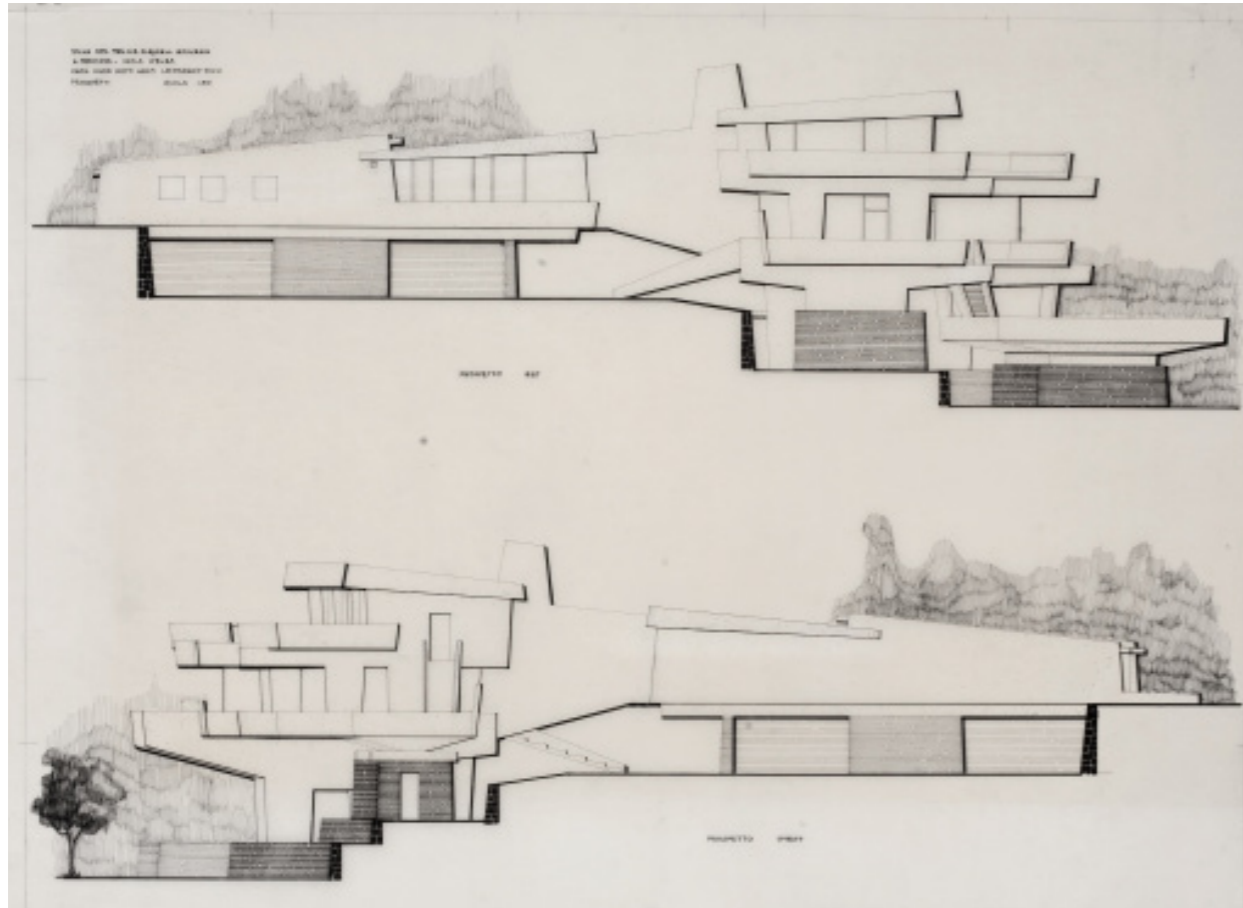


ESSENTIAL BIBLIOGRAPHY

C. Vasič Vatovec, *Leonardo Ricci. Architetto "esistenzialista"* (Firenze: Edifir, 2005), 133-135.

IMG.1: Project for Pleydell Bouverie House, ink on transparency, plan, scale 1:50, CSAC; IMG.2: Section A-A, scale 1:50, ink on transparency, CSAC; IMG.3: East elevation, scale 1:50, ink on transparency, CSAC; IMG.4: West elevation, scale 1:50, ink on transparency, CSAC.





IMG.5: East-west elevation, scale 1:50, ink on transparency, CSAC; IMG.6: general plan, scale 1:500, ink on transparency, CSAC; IMG.7: plan of the bedrooms, scale 1:100, ink on transparency, CSAC; IMG.8: picture of the model, CSR.

