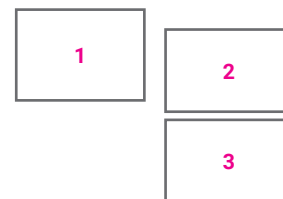


Savona Palace of Justice

ARCHIVAL DATA

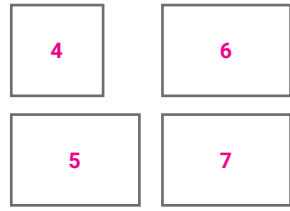
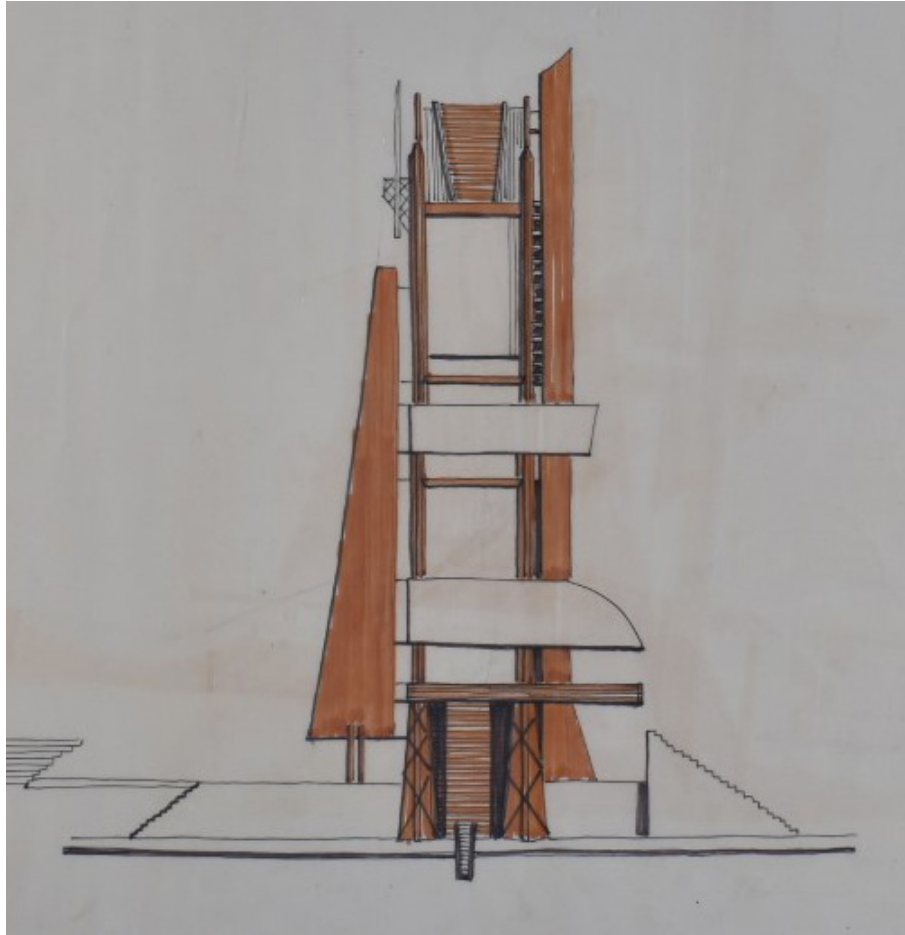
DATE	1981-1987 (design and realization)
PLACE/ADDRESS	Via Angelo Barile, 1, Savona
COLLABORATORS	Maria Grazia Dallerba Andrea Ricci, Pietro Porro, Cecilia Piccinini
CUSTOMER	Municipality of Savona
SOURCES	CSR



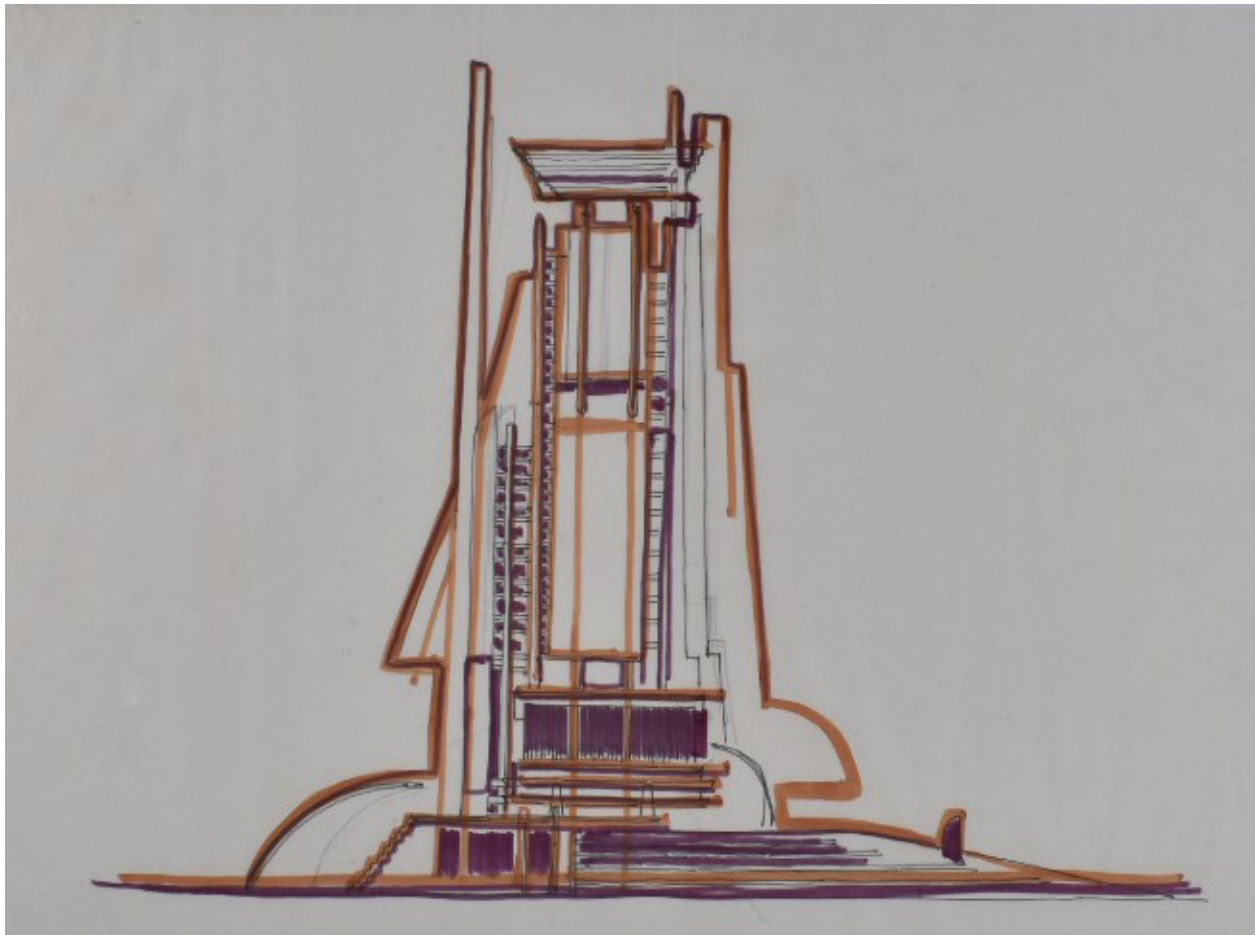
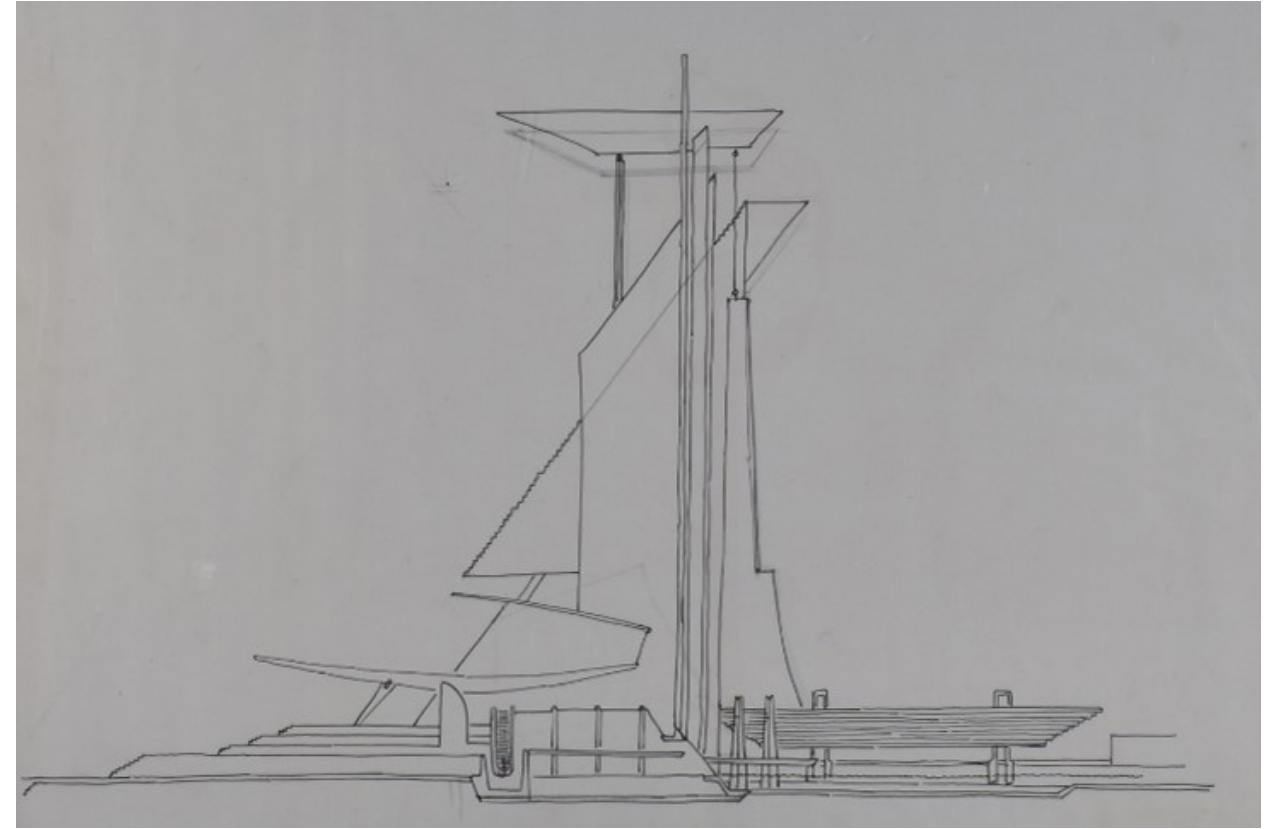
ESSENTIAL BIBLIOGRAPHY

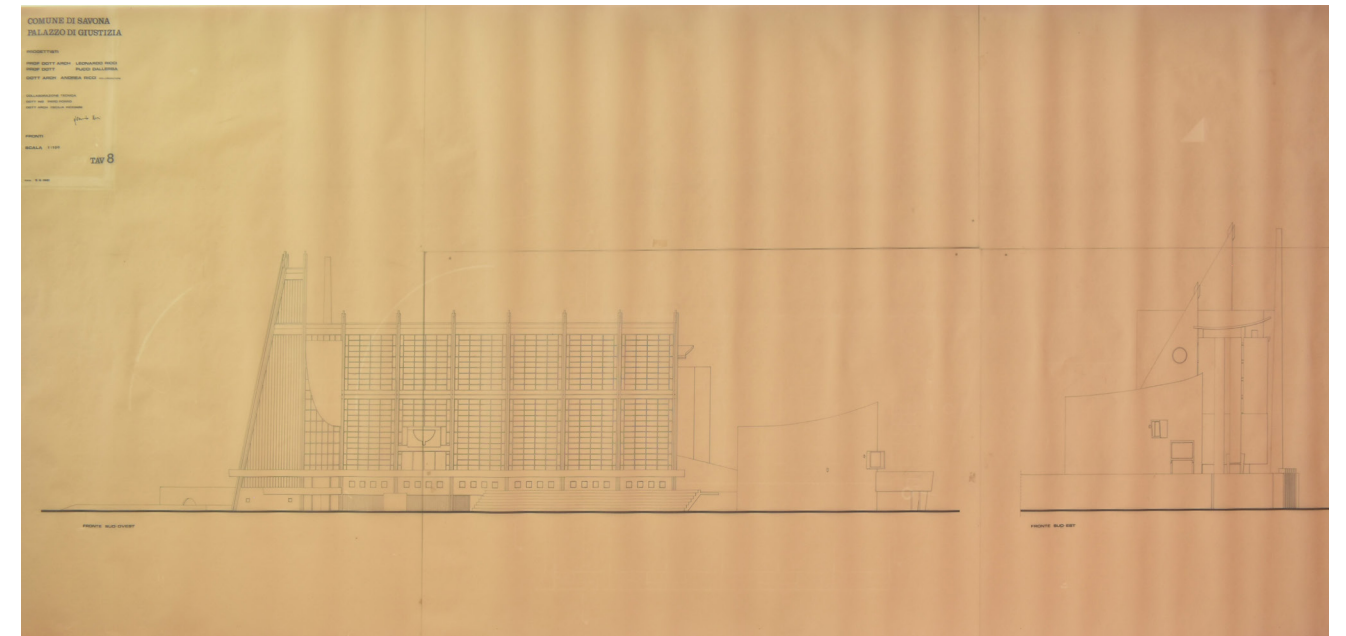
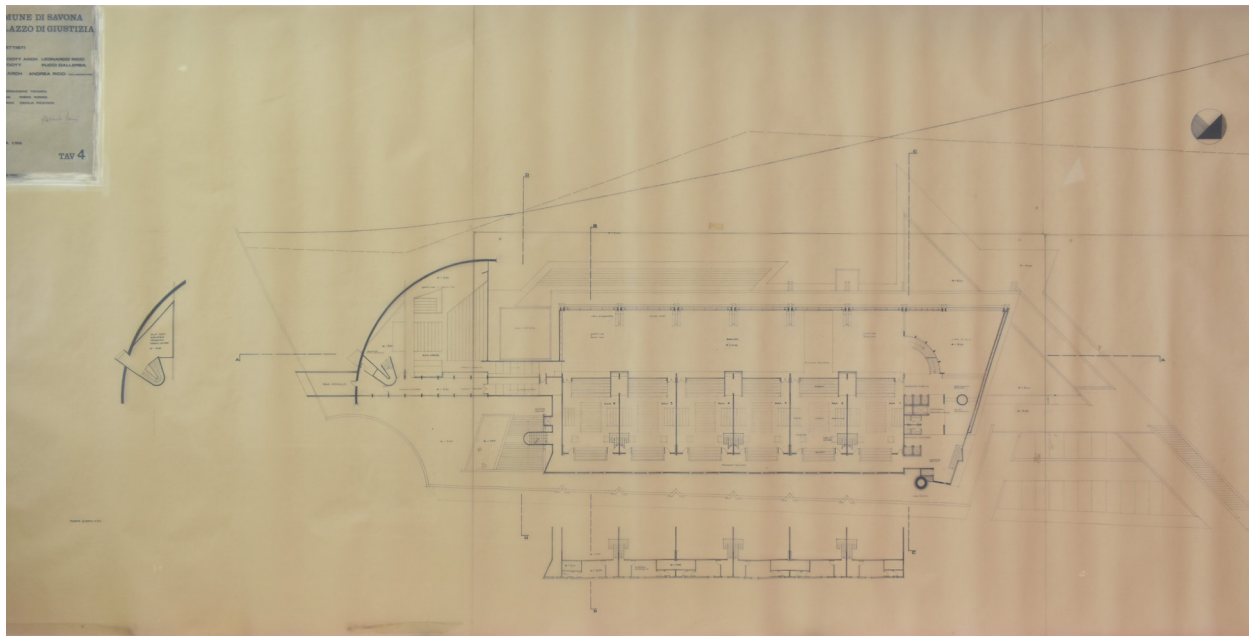
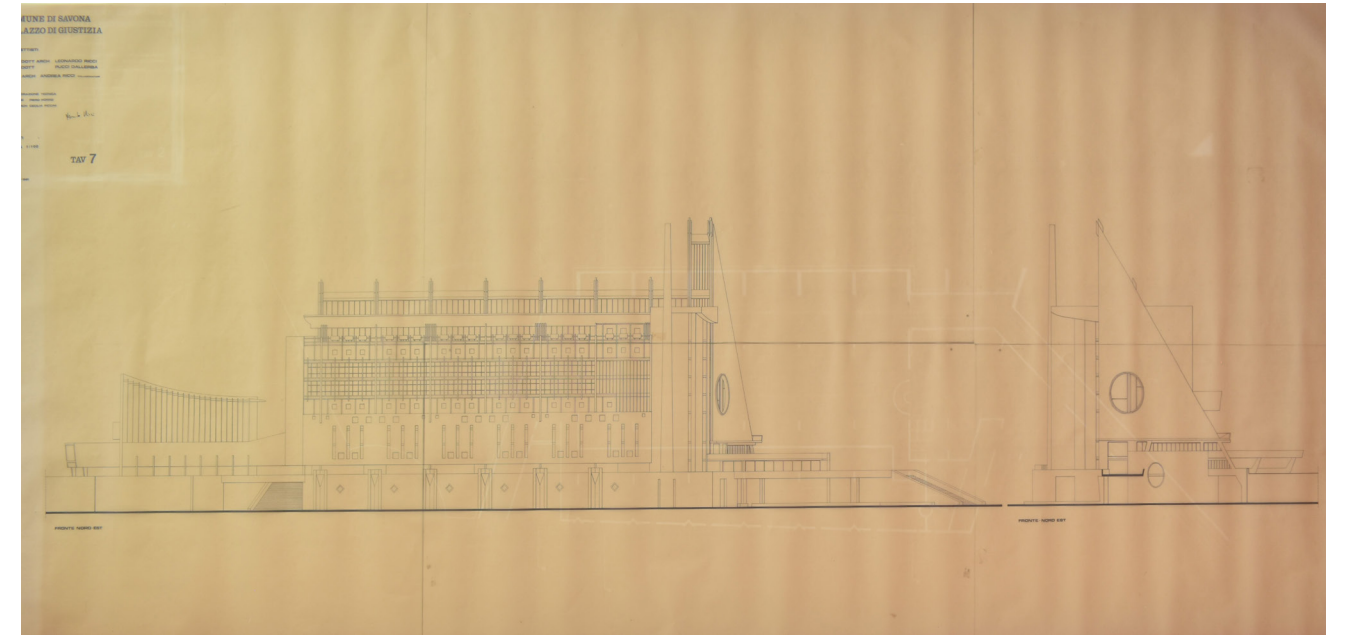
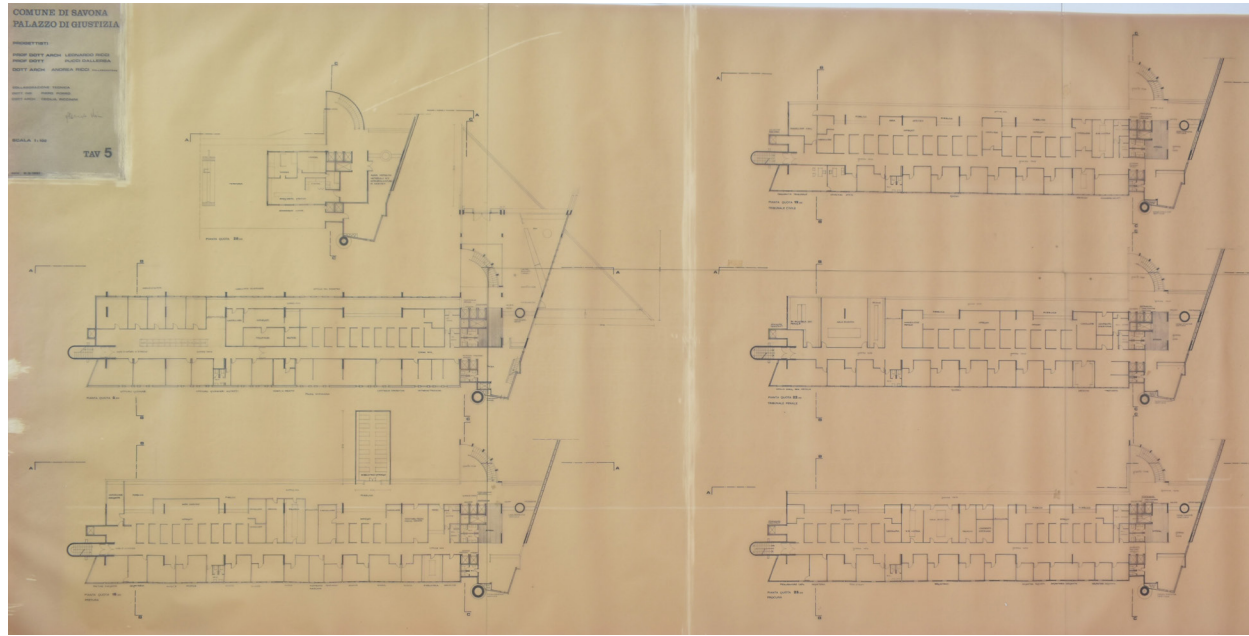
A. Nardi, ed., *Leonardo Ricci: testi, opere, sette progetti recenti di Leonardo Ricci* (Pistoia: Edizioni del Comune di Pistoia, Italia Grafiche, 1984), 75-86; C. Vasić Vatovec, *Leonardo Ricci: architetto 'esistenzialista'* (Firenze: Edifir, 2005), 45-48; F. Fabbrizzi, L. Macci, and U. Tramonti, *Opere e progetti di scuola fiorentina, 1968-2008* (Firenze: Alinea, 2008), 130-143.

IMG.1-2-3: Savona Palace of Justice, study-sketches of the elevations, lapis and felt-tip on transparency, CSR.



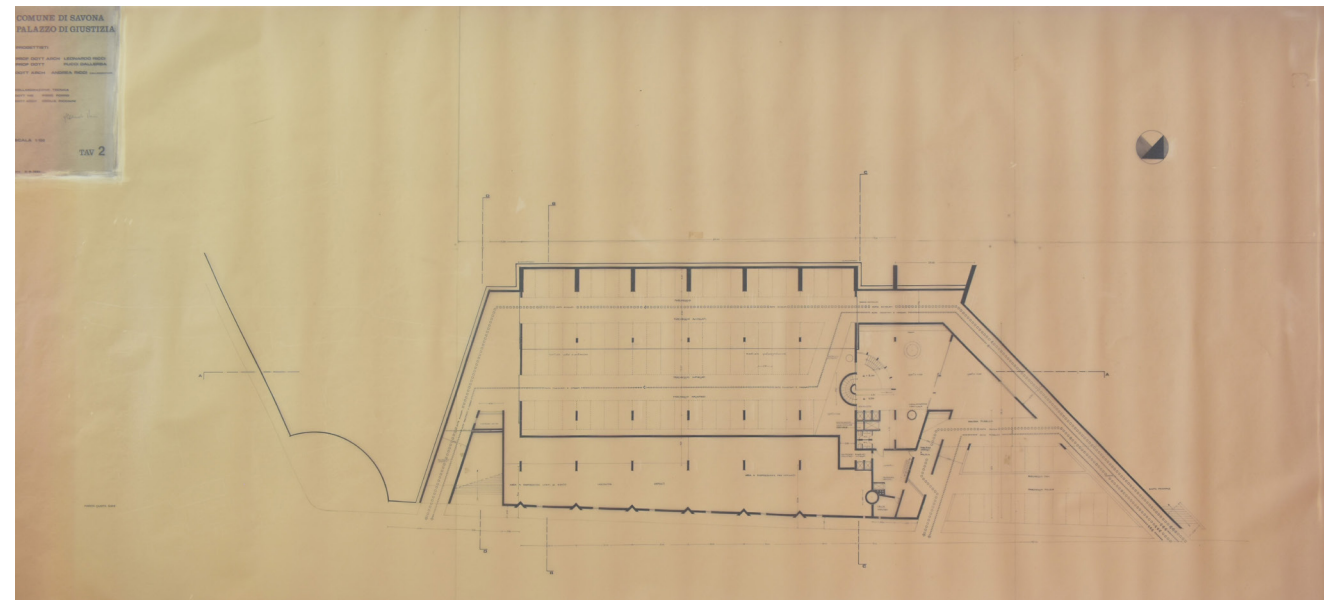
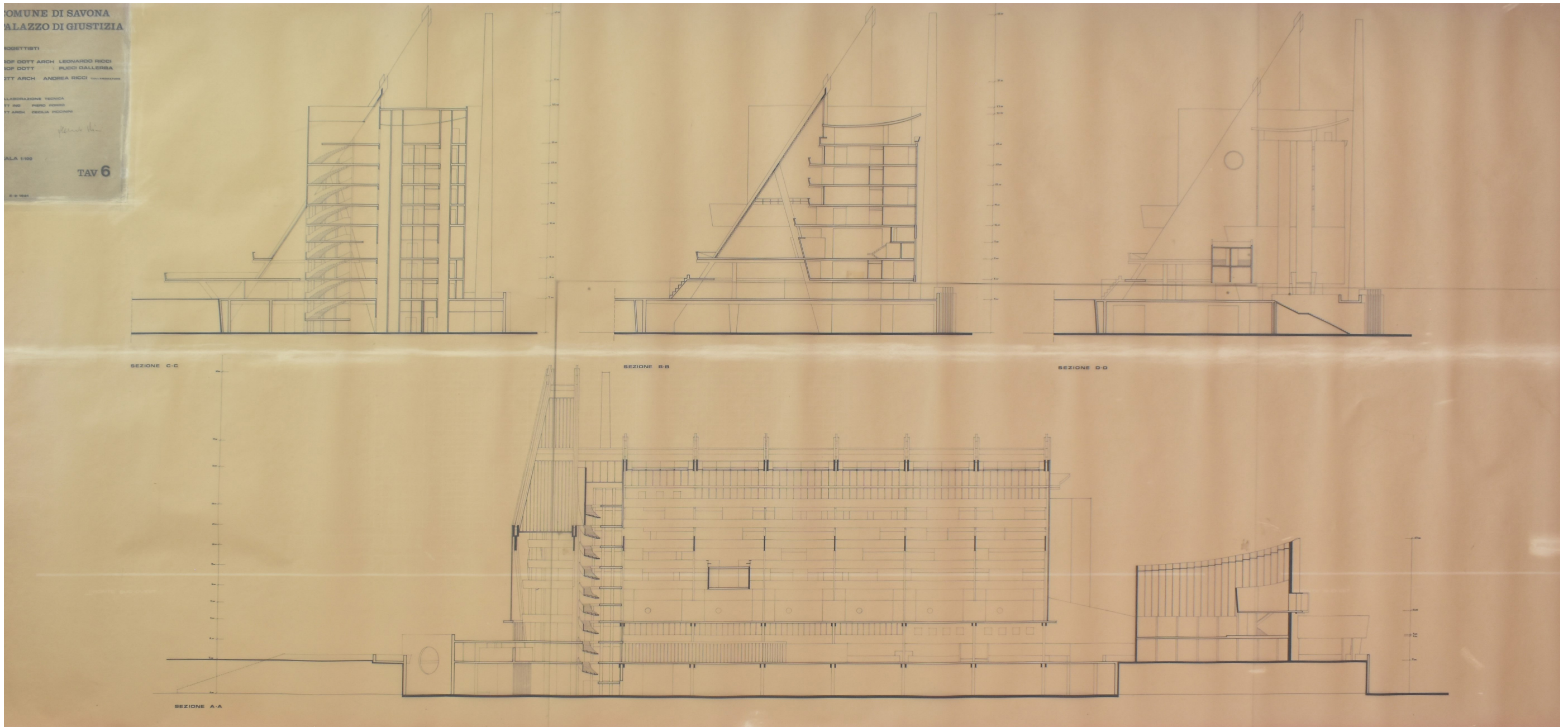
IMG.4-5-6-7: study-sketches of the elevations and sections, lapis and felt-tip on transparency, CSR.





8	10
9	11

IMG.8: plans, scale 1:100, heliographic copies, CSR; IMG.9: plan at 11m, scale 1:100, heliographic copy, CSR; IMG.10: north-east elevation, scale 1:100, heliographic copy, CSR; IMG.11: south-west elevation, scale 1:100, heliographic copy, CSR.



IMG.12: sections AA, BB, CC, DD, scale 1:100, heliographic copies, CSR; IMG.13: general plan, scale 1:2000 and 1:500, heliographic copy, CSR; IMG. 14; plan at 0.50 m, scale 1:100, heliographic copy, CSR.