

Project for

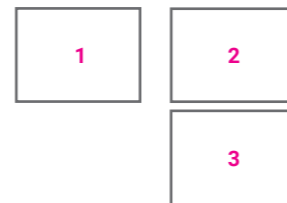
Macrostructure for an Integrated Town

ARCHIVAL DATA

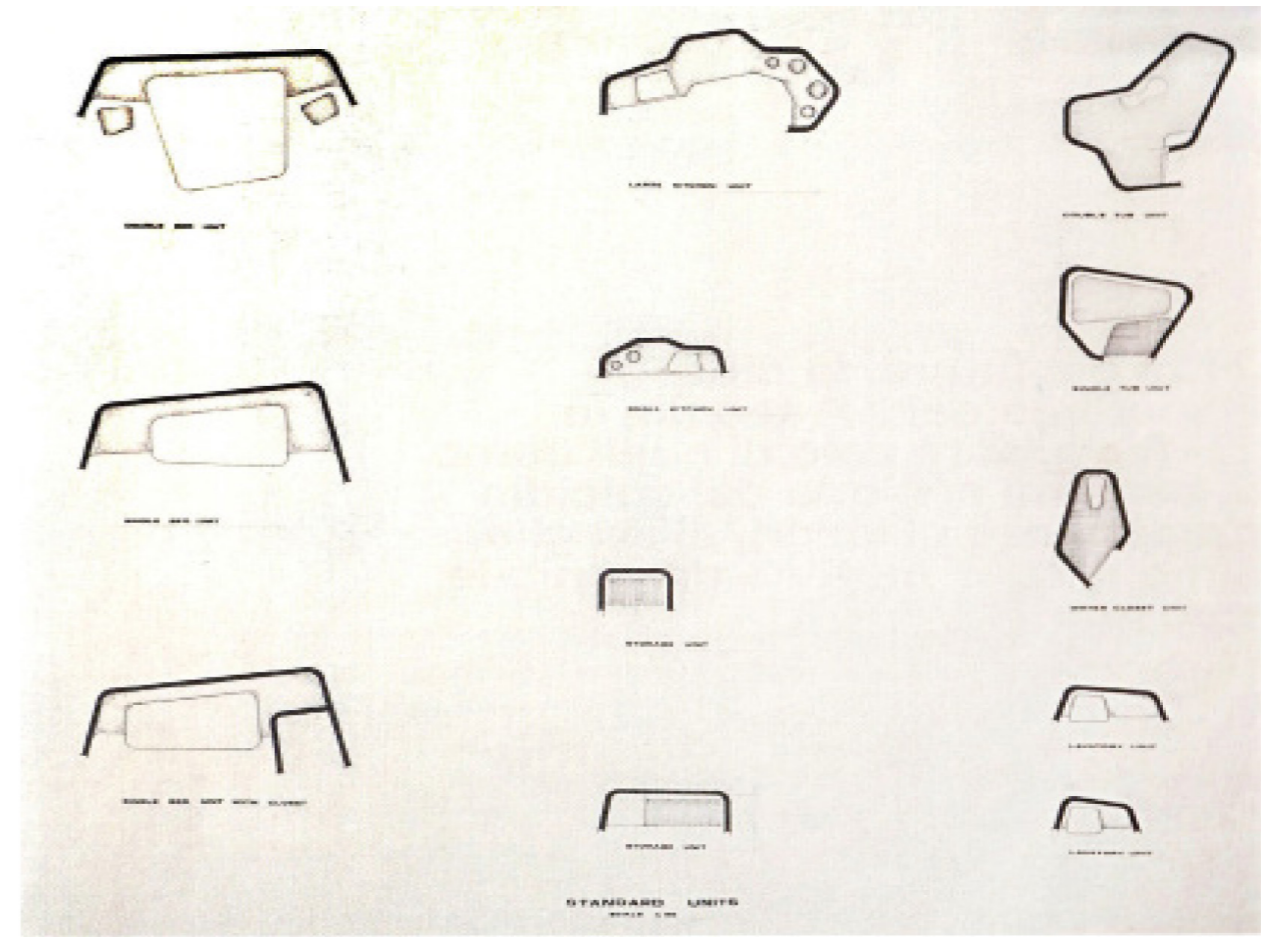
DATE (design)	1965
PLACE/ADDRESS	-
COLLABORATORS	Pennsylvania State University students
CUSTOMER	-
SOURCES	CSAC, CSR

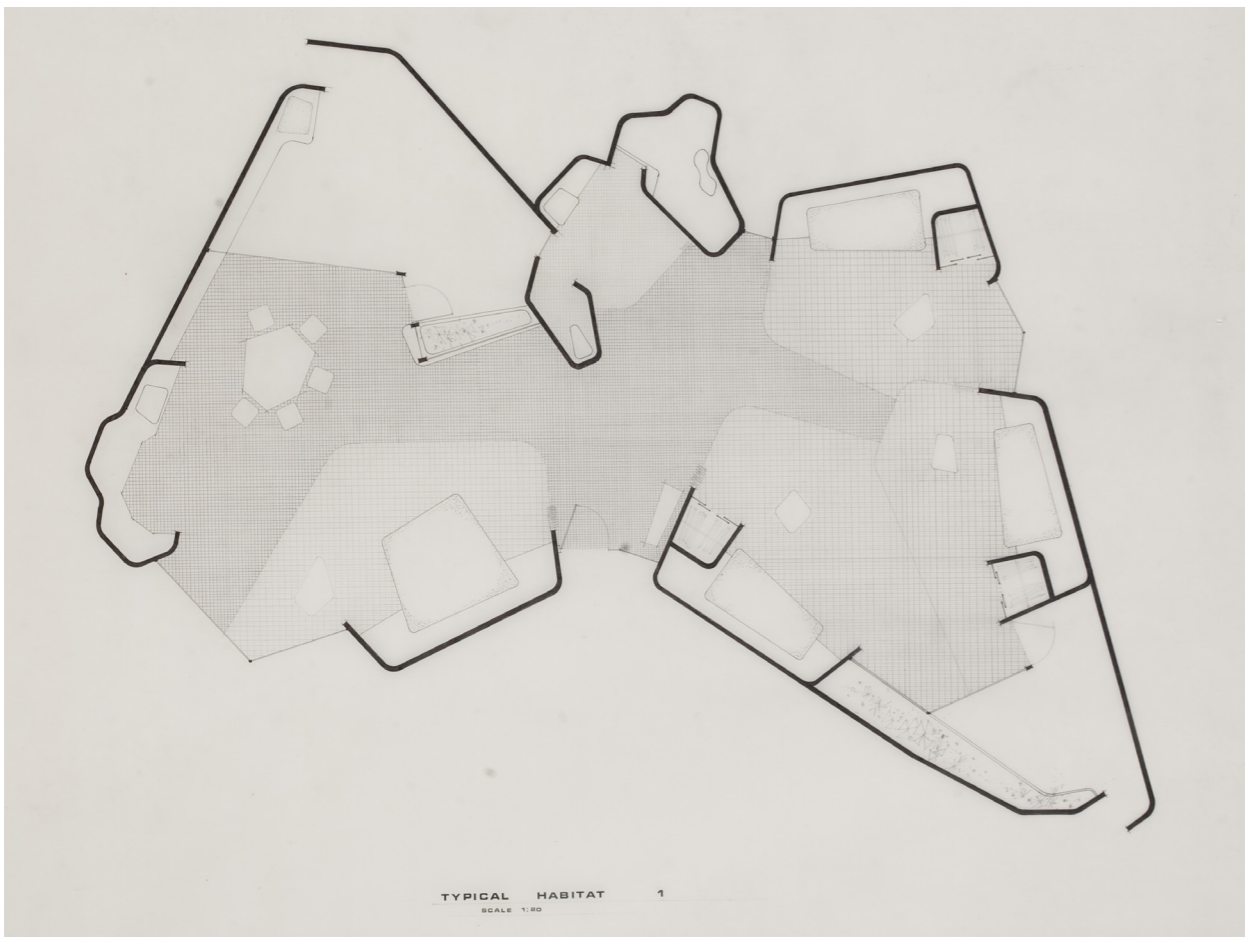
ESSENTIAL BIBLIOGRAPHY

L.V. Masini, *Leonardo Ricci. Progetti di un'architettura per l'uomo del futuro. Un libro perduto e ritrovato 1967-2019* (Pistoia: Gli Ori, 2019), 40-50; M. C. Ghia, *La nostra città è tutta la Terra. Leonardo Ricci architetto (1918-1994)*, Wuppertal: Steinhauser Verlag, 2021, 232-242; I. Cattabriga, "Leonardo Ricci in the United States. A Twenty year American Transfer as a Turning Experience in Teaching and Design" (PhD. Diss., University of Bologna, 2021), 108-117.

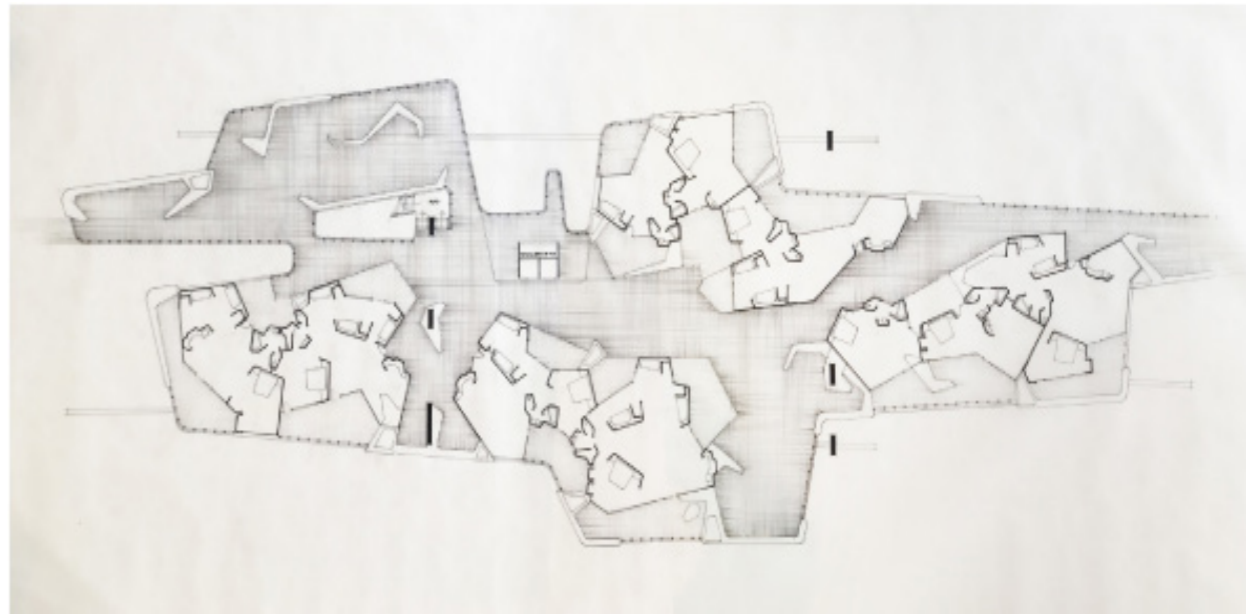


IMG.1: MODEL I: Harbor-center with water-sea-earth communication routes (Pennsylvania State University, 1965), picture of the model, folder "USA", CSR; IMG.2: Macrostructure for an Integrated Town, Standard units, ink on transparency, CSAC; IMG.3: Macrostructure for an Integrated Town, Section B-B, ink on transparency, CSAC.

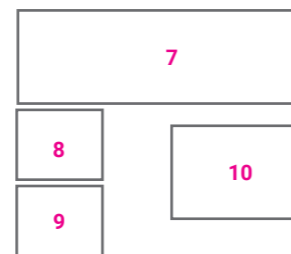
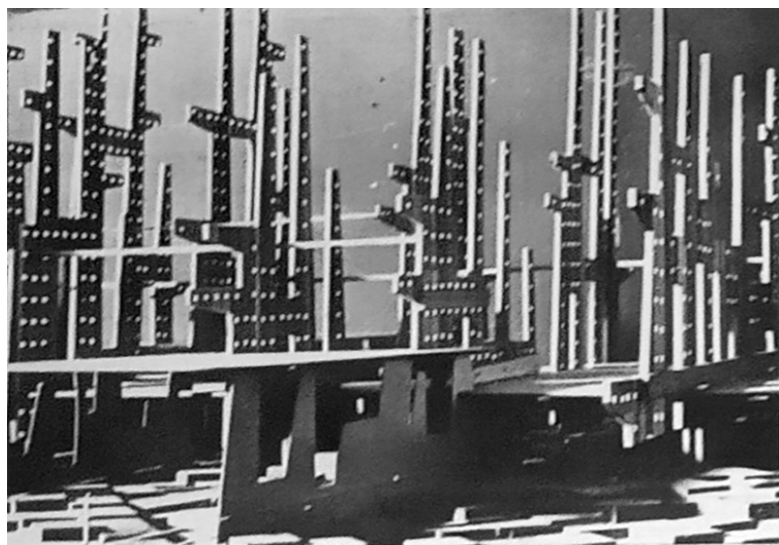




4 IMG.4: Macrostructure for an Integrated Town, Typical Habitat, ink on transparency, CSAC.



5 IMG.5: Macrostructure for an Integrated Town, Typical Level 1, ink on transparency, CSAC;
6 IMG.6: Macrostructure for an Integrated Town, Typical Level 2, ink on transparency, CSAC.



IMG.7: MODEL I: Harbor-center with water-sea-earth communication routes (Pennsylvania State University, 1965), picture of the model, general view, folder "USA", CSR; IMG.8: MODEL I: Harbor-center with water-sea-earth communication routes (Pennsylvania State University, 1965), picture of the model, model of the structure, folder "USA", CSR; IMG.9-10: MODEL I: Harbor-center with water-sea-earth communication routes (Pennsylvania State University, 1965), picture of the model, folder "USA", CSR.