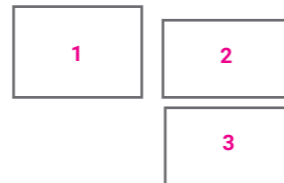


Goti Factory

ARCHIVAL DATA

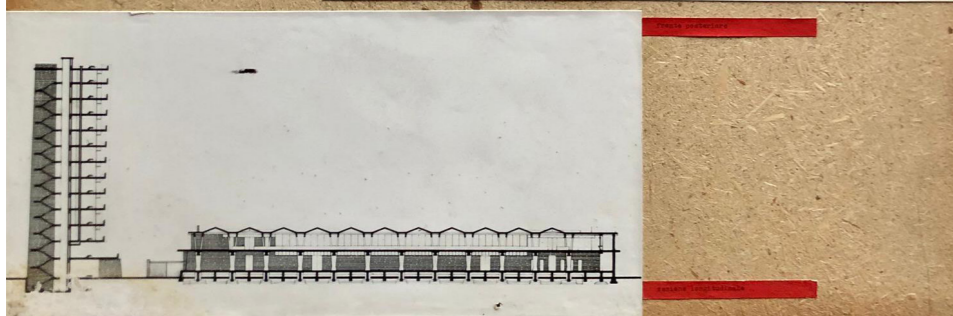
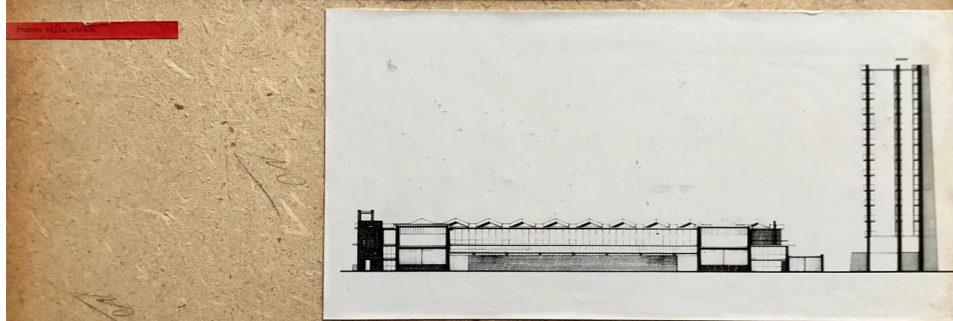
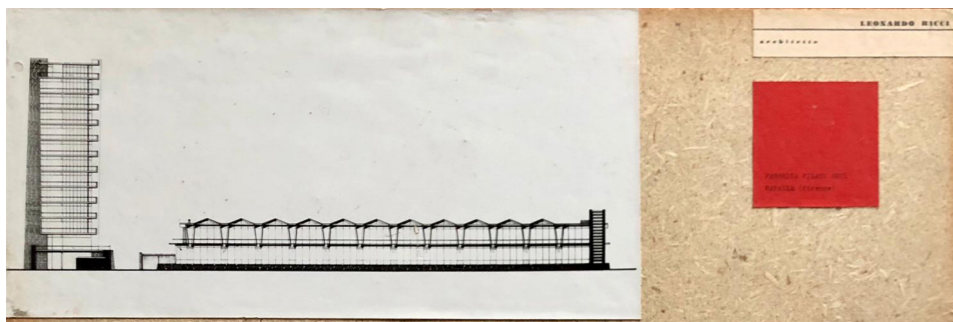
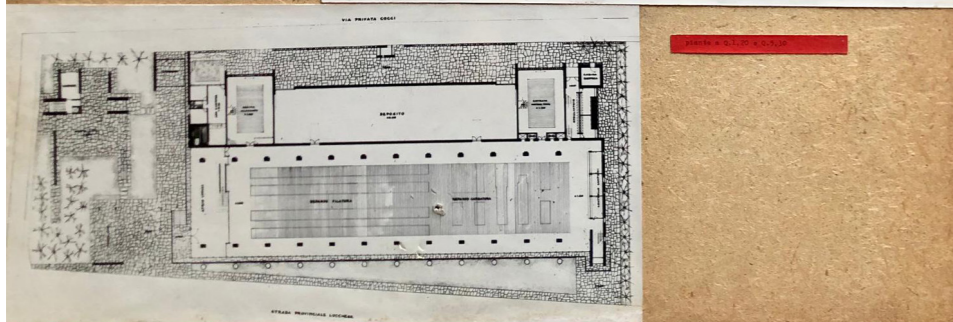
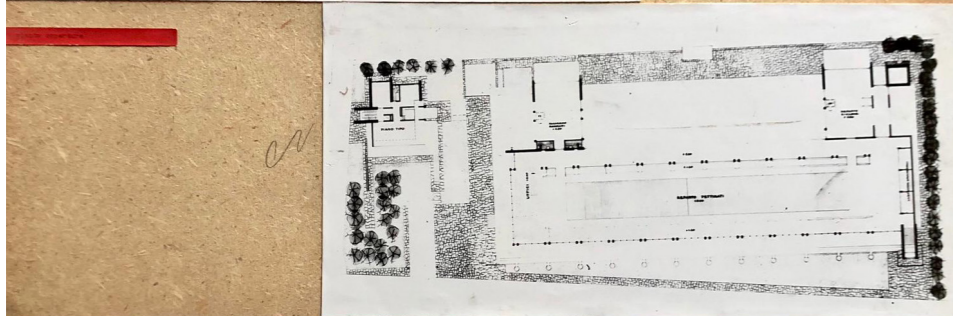
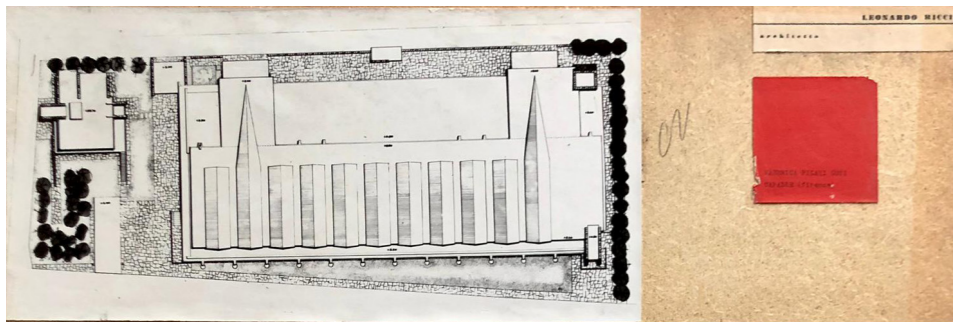
DATE	1959 (design and realization)
ADDRESS	Via dei Confini, 236 Campi Bisenzio, Firenze
COLLABORATORS	Enzo Trapani, Fabrizio Milanese
CUSTOMER	Nazareno Goti
SOURCES	CSAC, CSR



ESSENTIAL BIBLIOGRAPHY

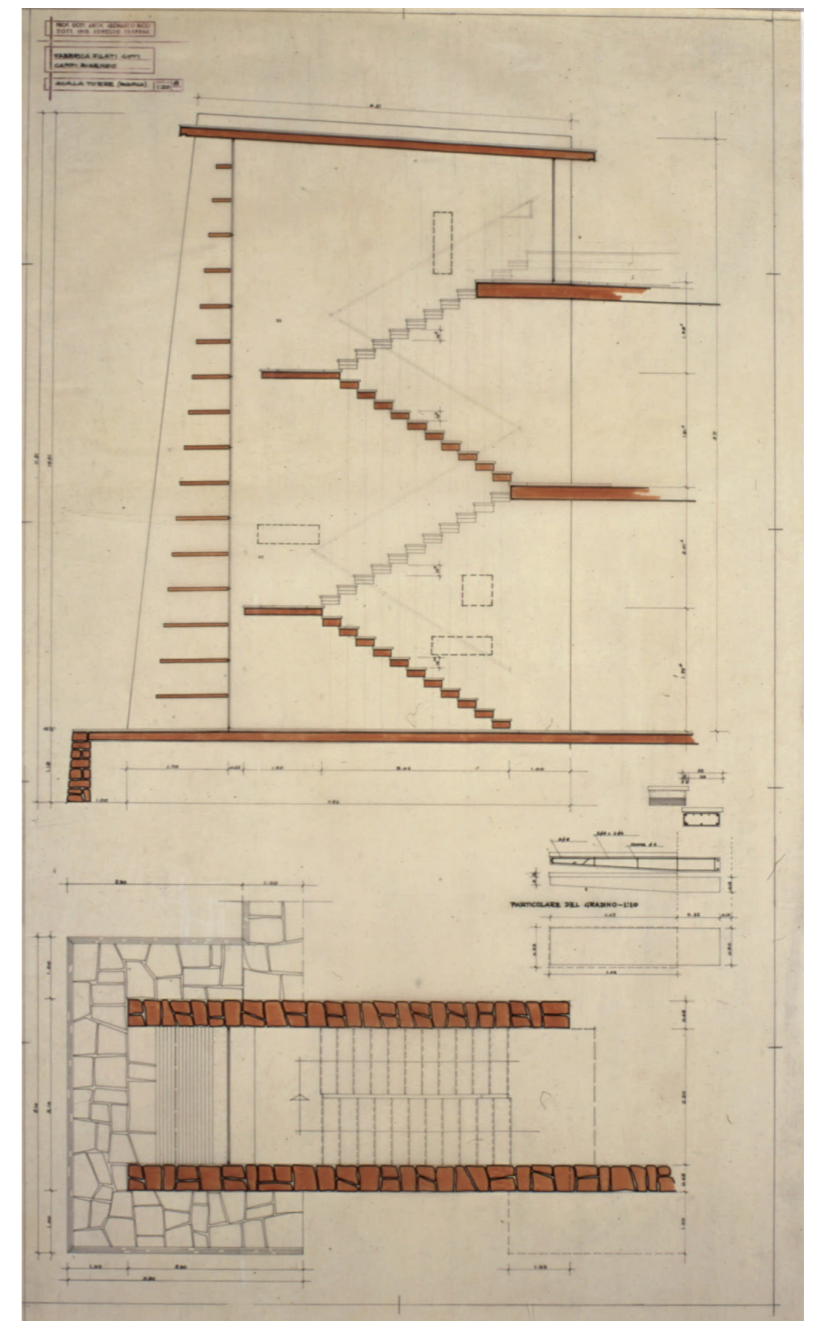
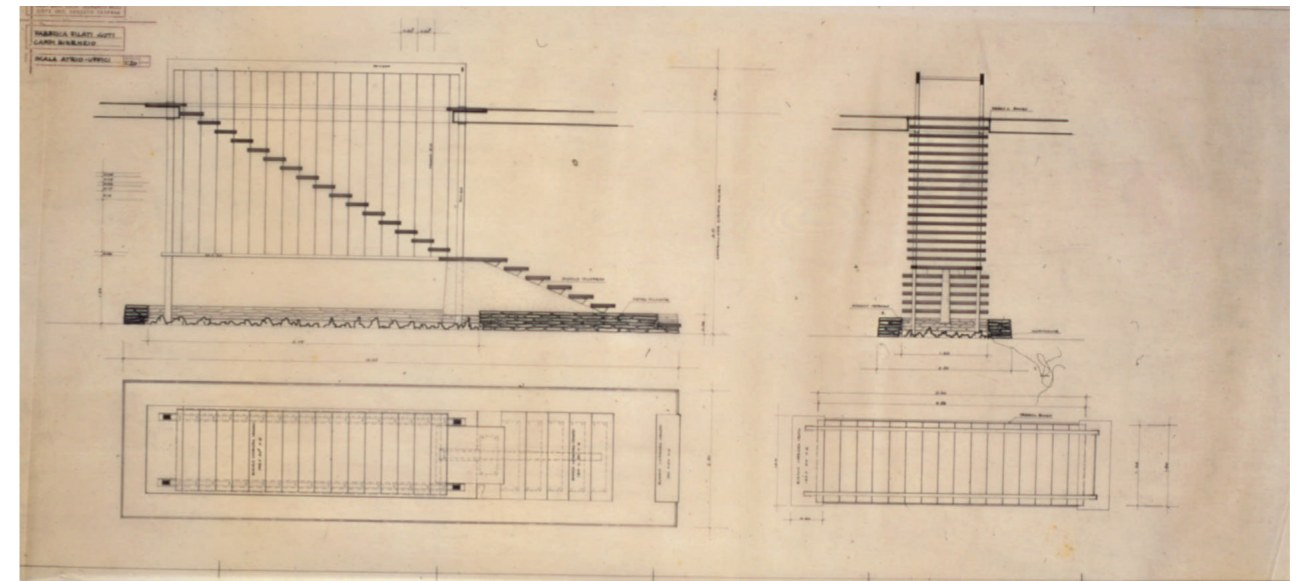
W. Lattes, "Perché è nata la fabbrica 'bella'," *Il Giornale del Mattino*, July 30, 1961; C. Vasič Vatovec, *Leonardo Ricci. Architetto "esistenzialista"* (Firenze: Edifir, 2005), 35, 38; A. Nardi, ed., *Leonardo Ricci: testi, opere, sette progetti recenti di Leonardo Ricci* (Pistoia: Edizioni del Comune di Pistoia, Italia Grafiche, 1984), 42, 43.

IMG.1: Goti Factory, plan of the ground floor, scale 1:100, lapis and felt-pen on paper, CSAC; IMG.2: plan at 8.20 m, scale 1:100, lapis and felt-pen on paper, CSAC; IMG.3: elevations, scale 1:100, lapis and felt-pen on paper, CSAC.



- 4
- 5
- 6
- 7

IMG.4-5: images of the panels Ricci elaborated for the exhibition "Aspetti dell'Arte Contemporanea. Omaggio a Cagli, omaggio a Fontana, omaggio a Quaroni. Architettura, pittura, scultura, grafica" (L'Aquila, Castello Cinquecentesco, luglio-settembre 1963), CSAC; IMG.6: plan and section of the staircase hall-offices, scale 1:20, CSAC; IMG.7: plan and section of the tower staircase, scale 1:20, CSAC.





8

10

9

IMG.8-9-10: pictures of the logbook n.4, pages collecting miscellaneous materials about the Goti Factory, CSR.