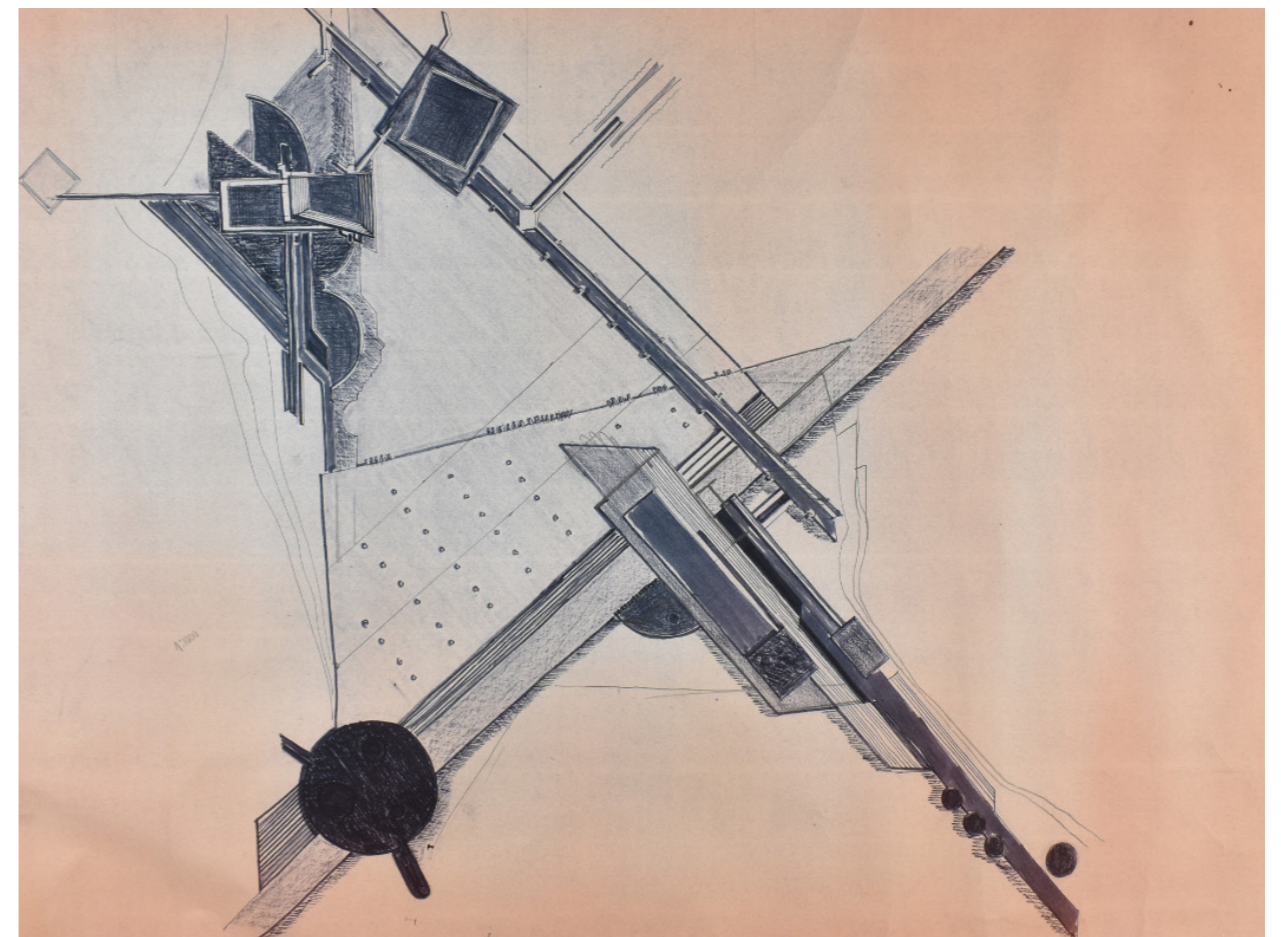
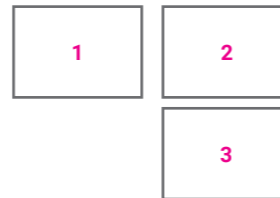


Directional Center of Florence

ARCHIVAL DATA

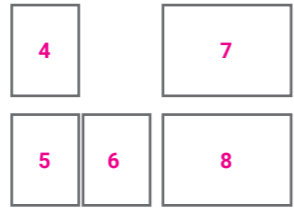
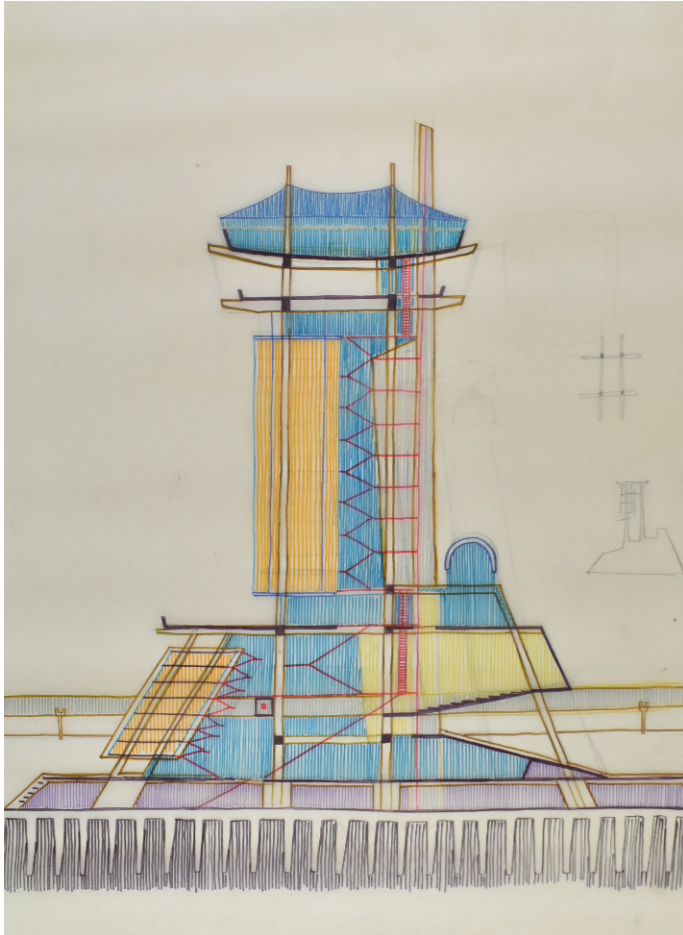
DATE	1977 (design)
PLACE/ADDRESS	Florence, Novoli
COLLABORATORS	-
CUSTOMER	Municipality of Florence
SOURCES	CSR



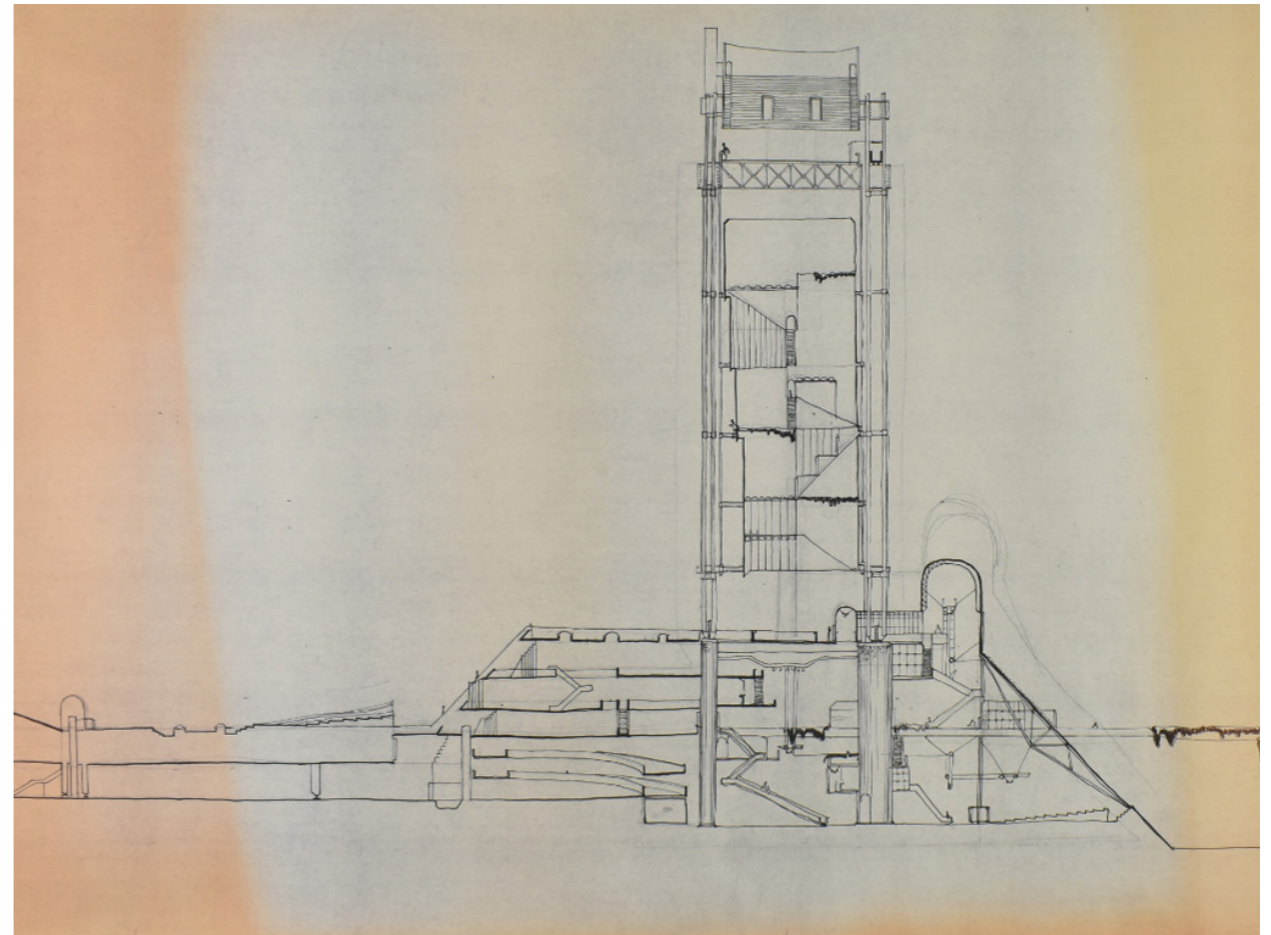
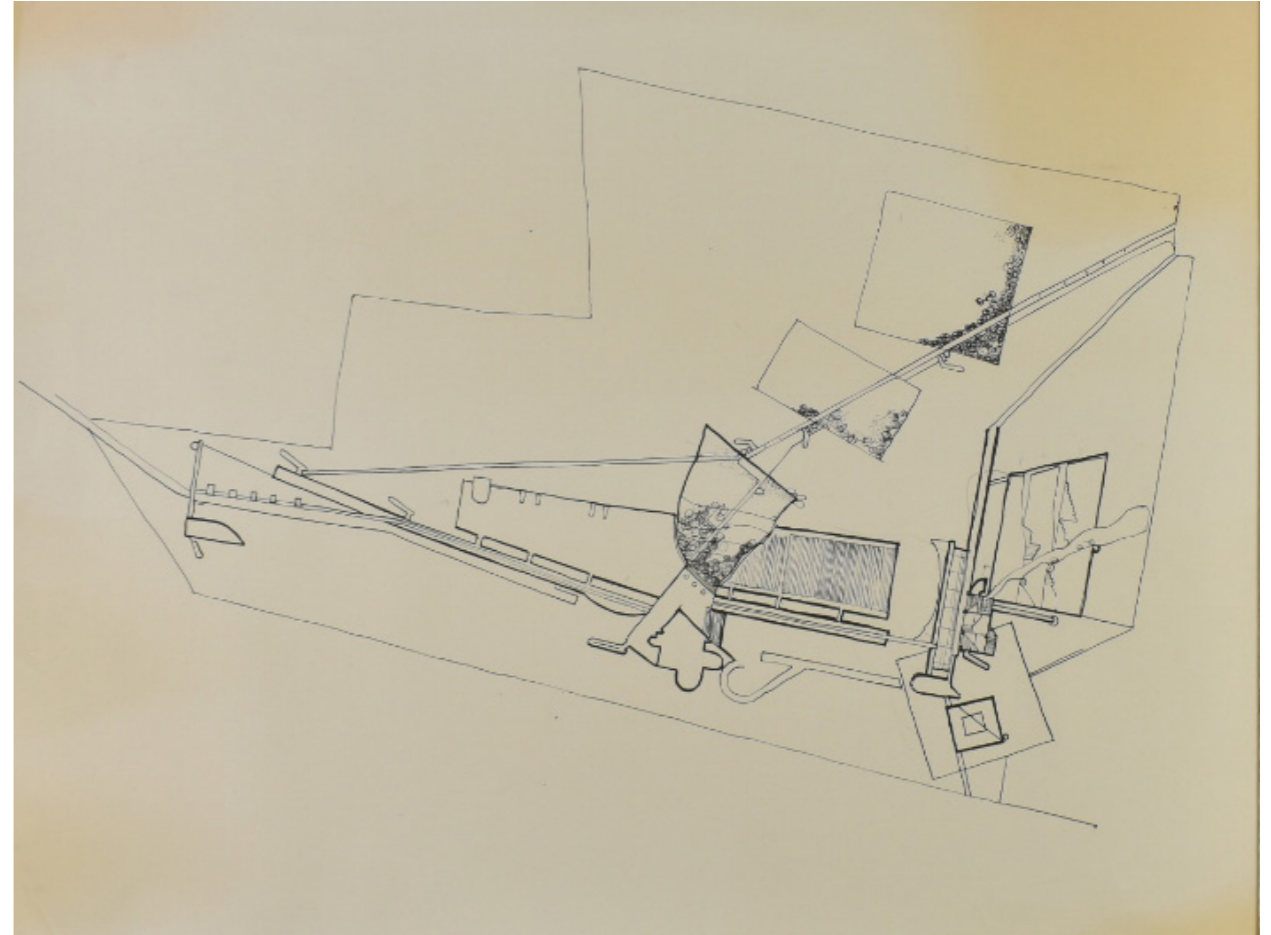
ESSENTIAL BIBLIOGRAPHY

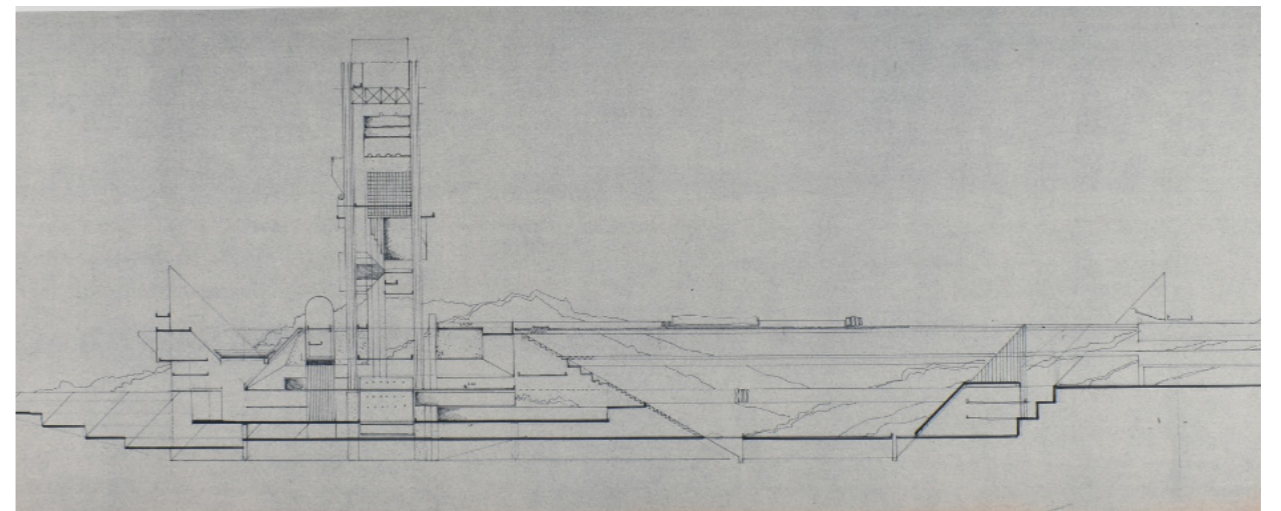
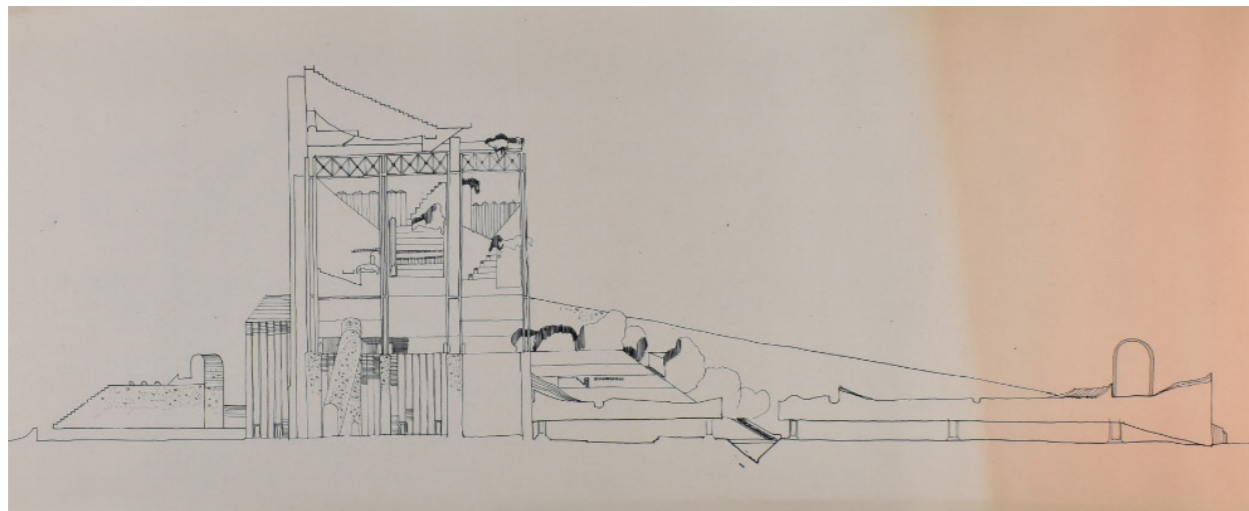
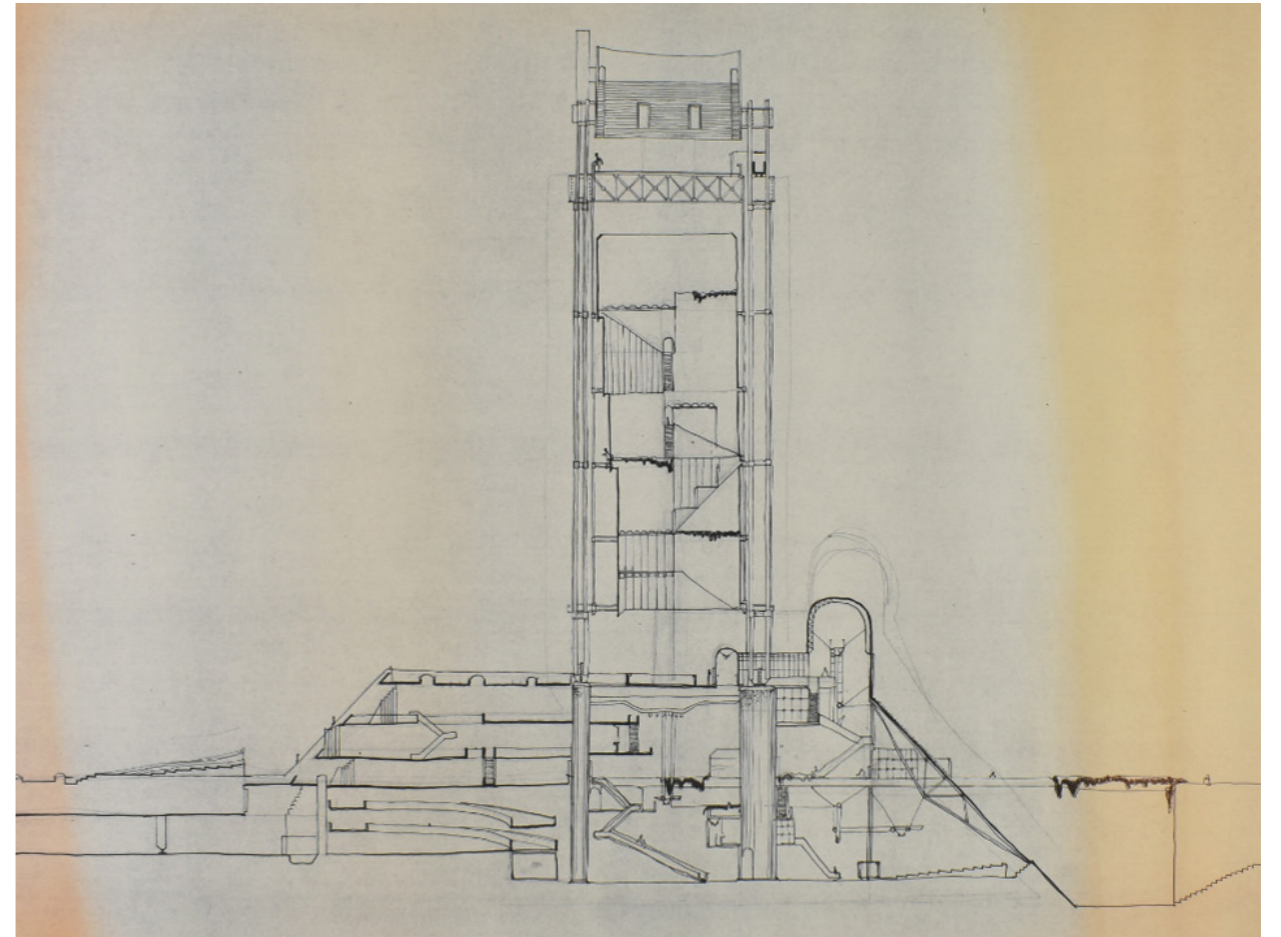
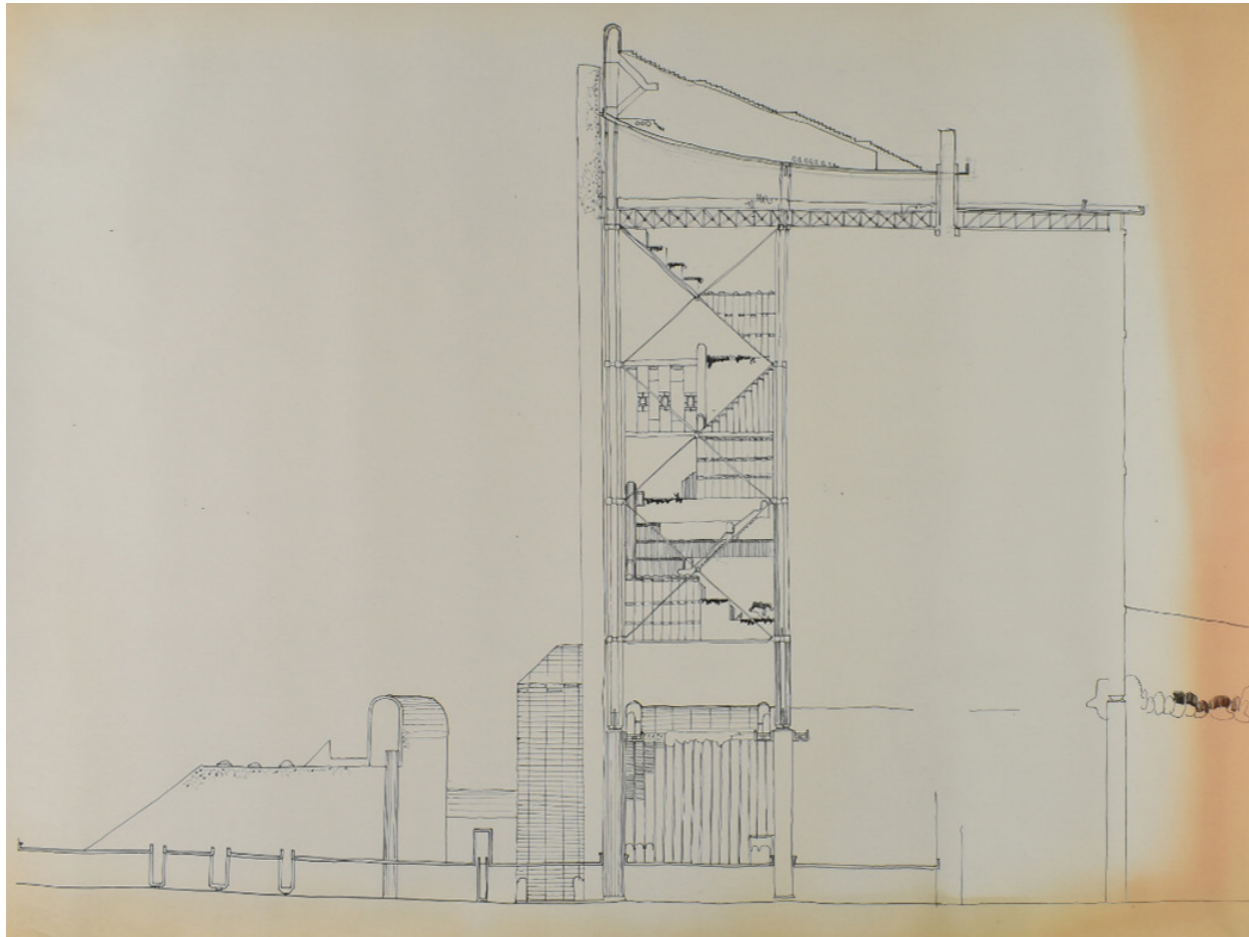
C. Vasić Vatovec, *Leonardo Ricci. Architetto "esistenzialista"* (Firenze: Edifir, 2005), 44; S. Berselli, "Fino al 26 Maggio a Firenze Una Mostra Presenta, Con Materiali in Gran Parte Inediti, Le Opere Dell'architetto Che Amava Definirsi Un 'Anonimo Del XX Secolo'", *Il Giornale Dell'Architettura*, April 24, 2019; M. C. Ghia, *La nostra città è tutta la Terra. Leonardo Ricci architetto (1918-1994)*, Wuppertal: Steinhauser Verlag, 2021, 250-253.

IMG.1: Project for the Directional Center of Florence, elevation, heliographic copy, CSR; IMG.2: sketch of the plan, watercolors, CSR; IMG.3: general plan, heliographic copy, CSR.



IMG.4-5-6: Project for the Directional Center of Florence, elevations, sketches, watercolors, CSR; IMG.7: scheme of the plan, heliographic copy, CSR; IMG.8: elevation, heliographic copy, CSR.





9	11
10	12

IMG.9-10-11: Project Florence Directional Center, section-elevations, heliographic copies, CSR; IMG.12: road section, heliographic copy, CSR.