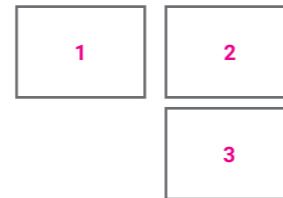


Arnaldo Ricci House

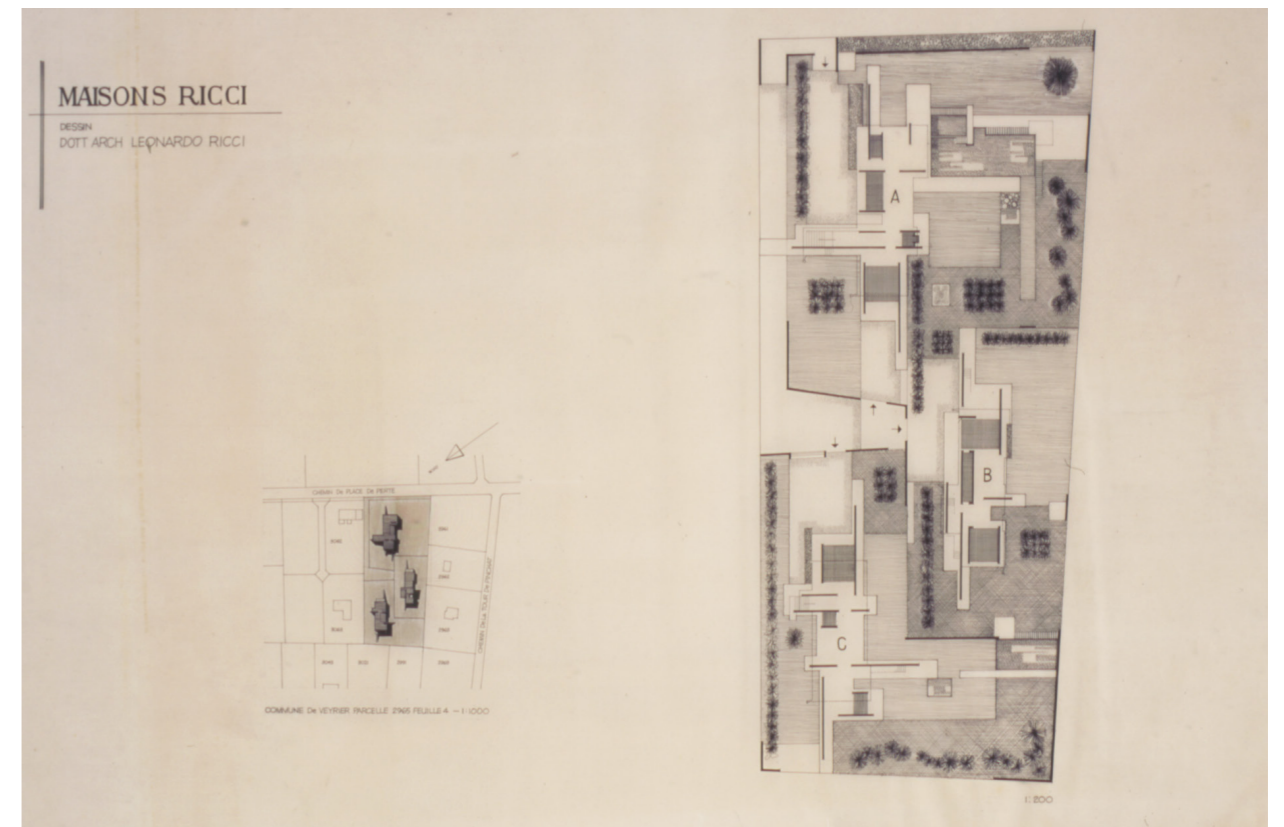
ARCHIVAL DATA

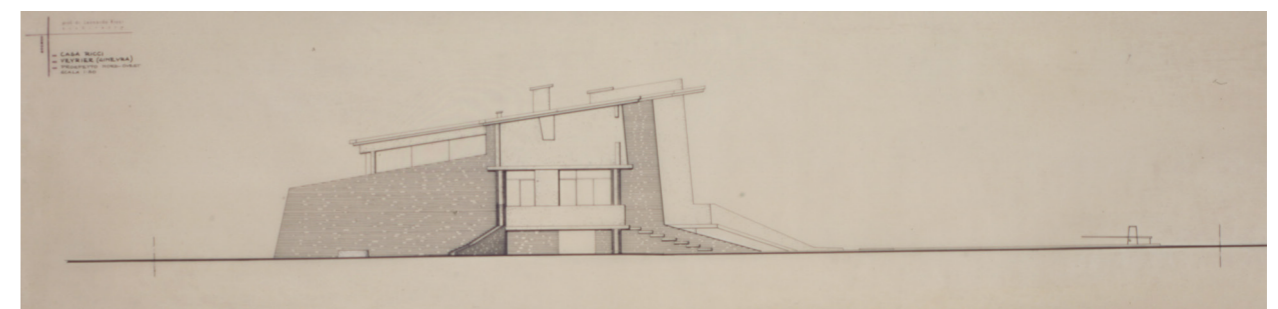
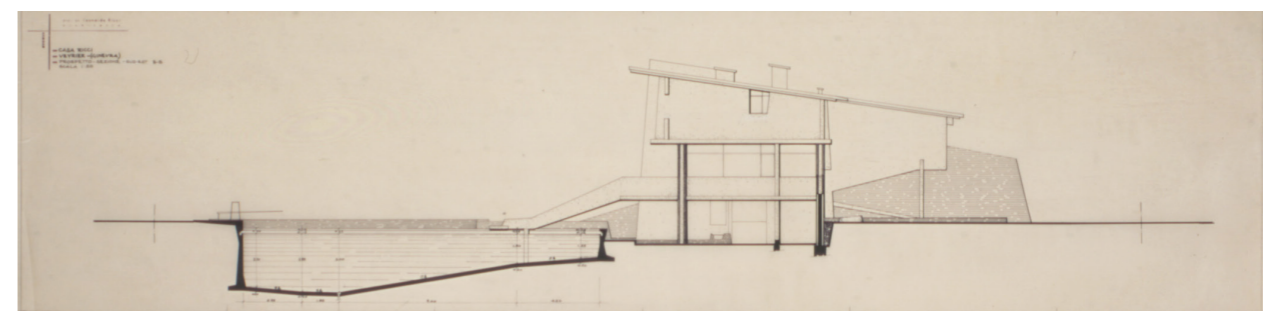
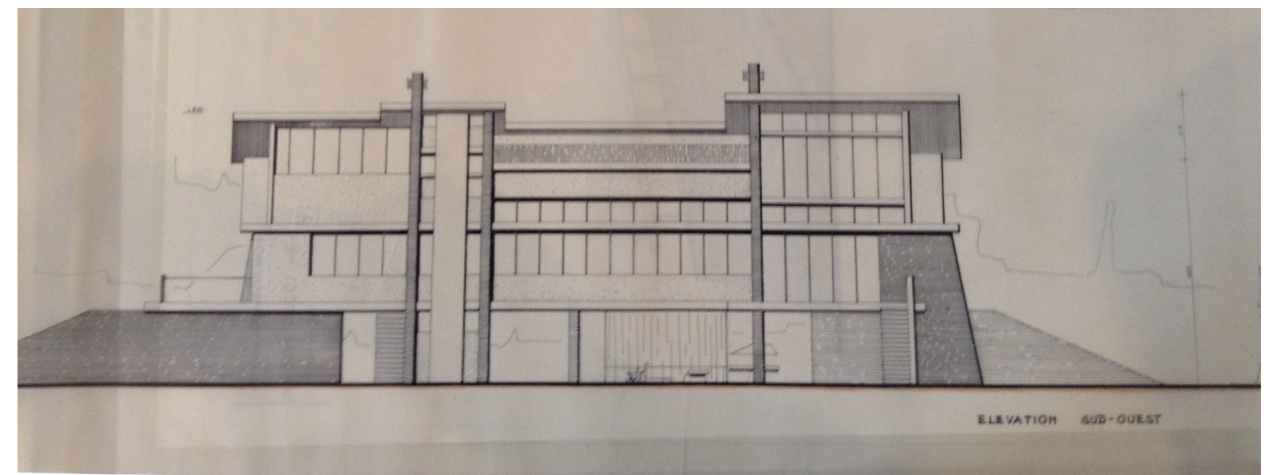
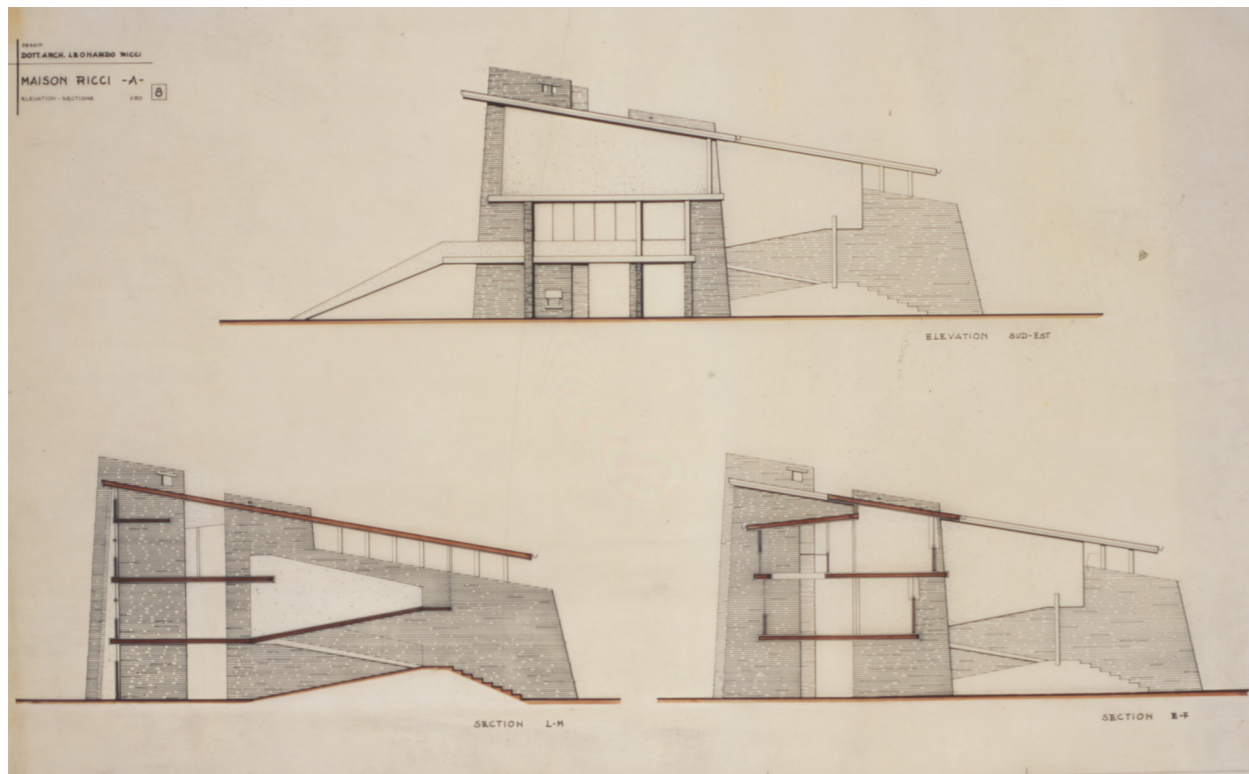
DATE (design and realization)	1953
PLACE/ADDRESS	Chemin de la Place Verte, Veyrier
COLLABORATORS	-
CUSTOMER	Arnaldo Ricci
SOURCES	CSAC, CSR



ESSENTIAL BIBLIOGRAPHY

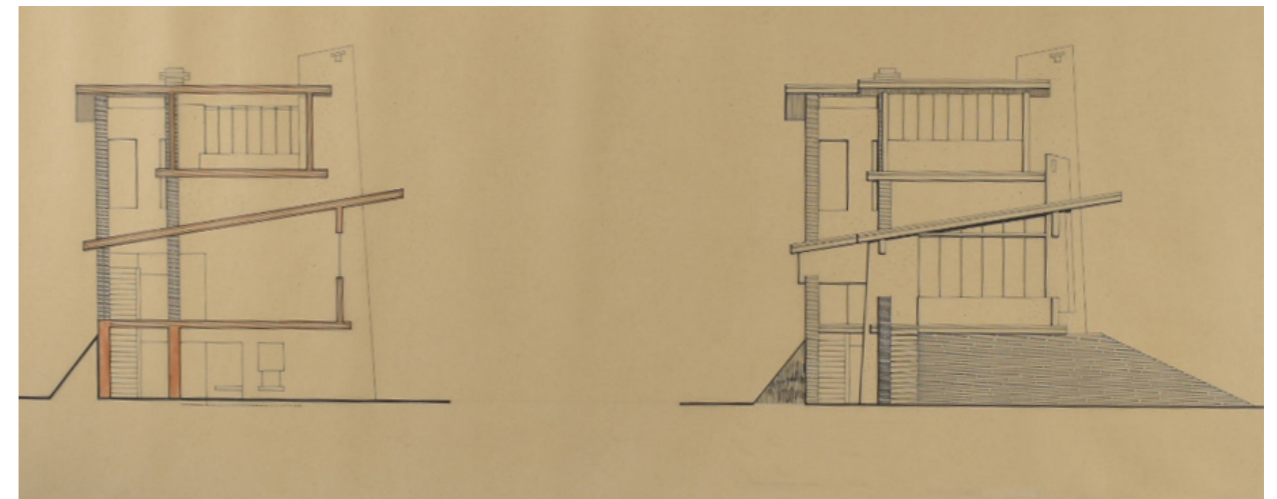
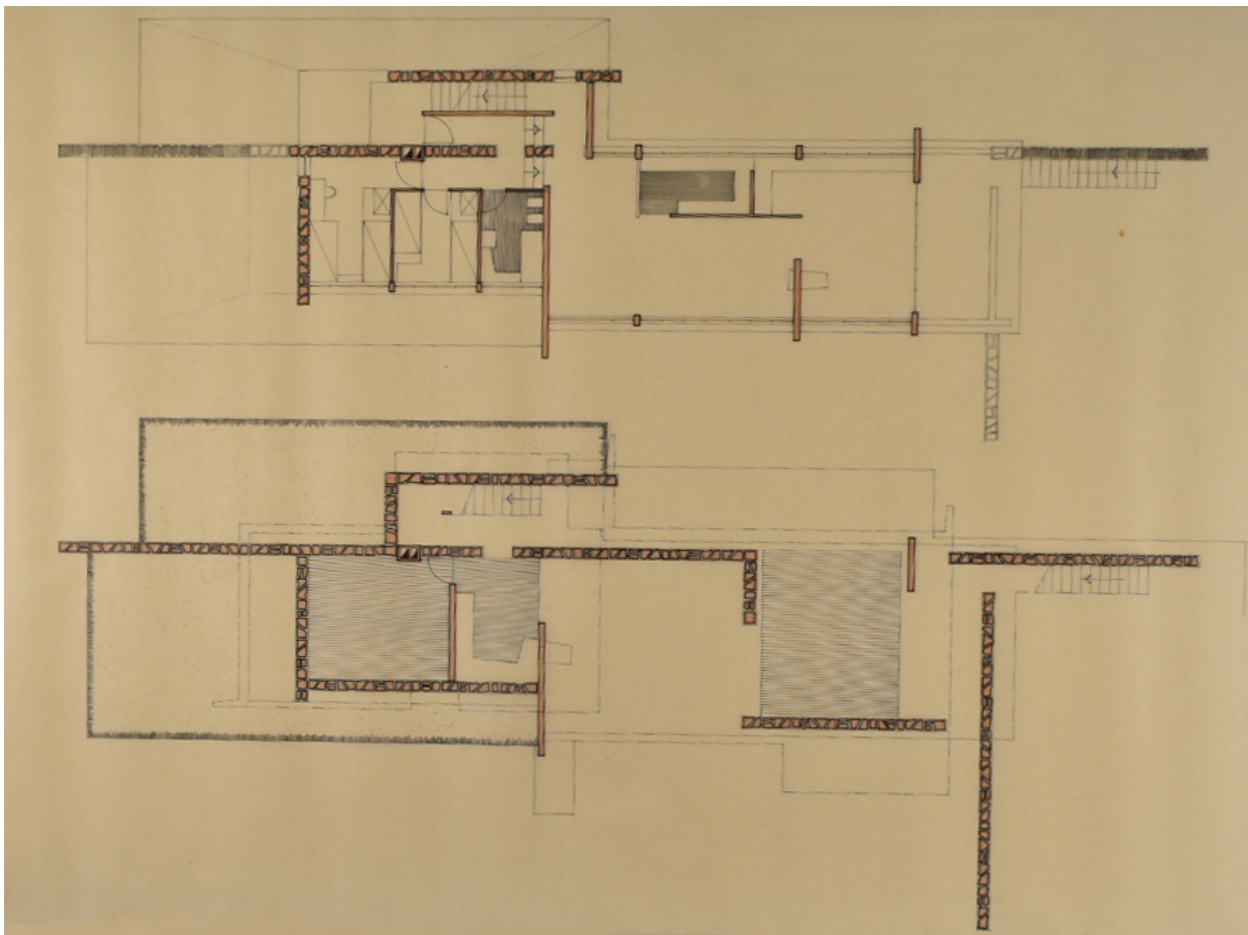
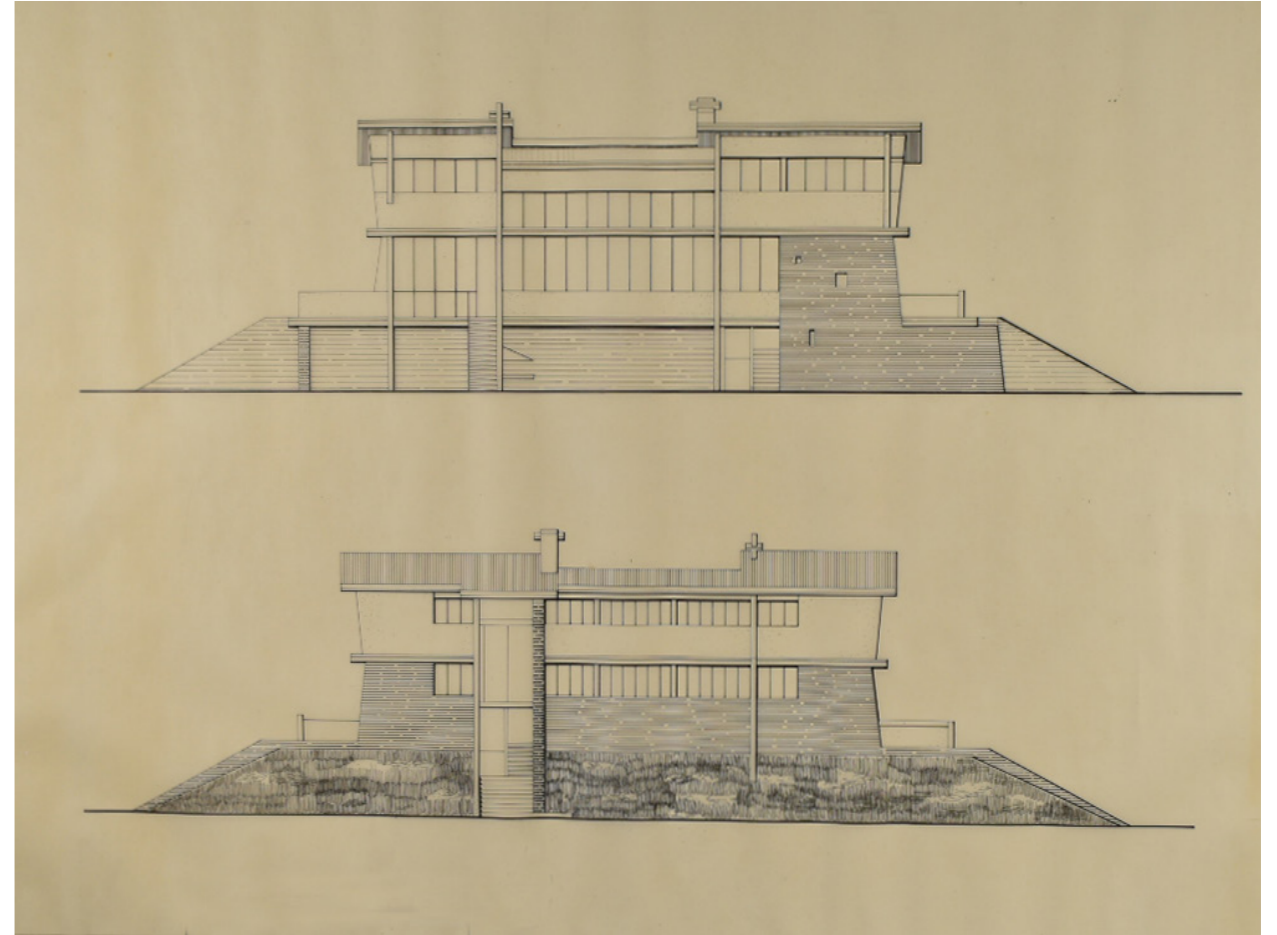
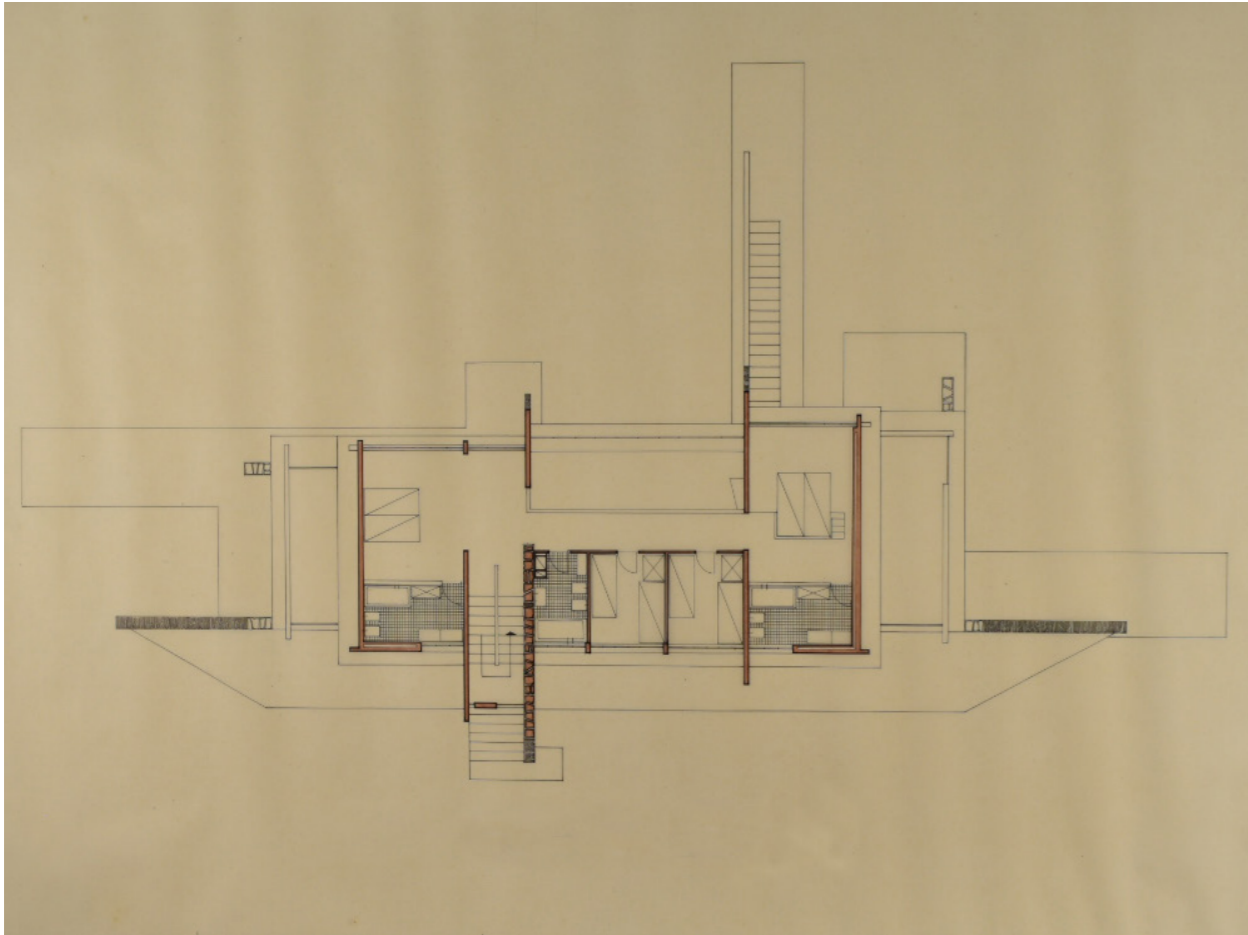
IMG.1: Project for Arnaldo Ricci House, plan, scale 1:50, ink and felt-pen on transparency, CSAC; IMG.2: Project for three "Maisons Ricci", general view, heliographic copy, CSAC; IMG.3: Project for three "Maisons Ricci", general plan, scale 1: 200, ink on transparency, CSAC.





- 4
- 5
- 6
- 7

IMG.4: Project for Arnaldo Ricci House, South-East elevation, section L-H and section E-F, scale 1:50, ink and felt-pen on transparency, CSAC; IMG.5: Project for Arnaldo Ricci House, South-West elevation, scale 1:50, heliographic copy, CSAC; IMG.6: Project for Arnaldo Ricci House, North-West elevation, scale 1:50, ink on transparency, CSAC; IMG. 7: Project for Arnaldo Ricci House, South-East section B-B, scale 1:50, ink on transparency, CSAC.



8	10
9	11

IMG.8: Project for three "Maisons Ricci", plan, scale 1:50, heliographic copy (with interventions), CSR; IMG.9: Project for three "Maisons Ricci", plan scale 1:50, heliographic copy (with interventions), CSR; IMG.10: Project for three "Maisons Ricci", elevation, scale 1:50, heliographic copy (with interventions), CSR; IMG. 11: Project for three "Maisons Ricci", section and elevation, scale 1:50, heliographic copy (with interventions), CSR.